



Flat 11, Sempringham Court Salisbury Road, Marlborough

Fixed Price **£285,000**

m^cfarlane
property.com

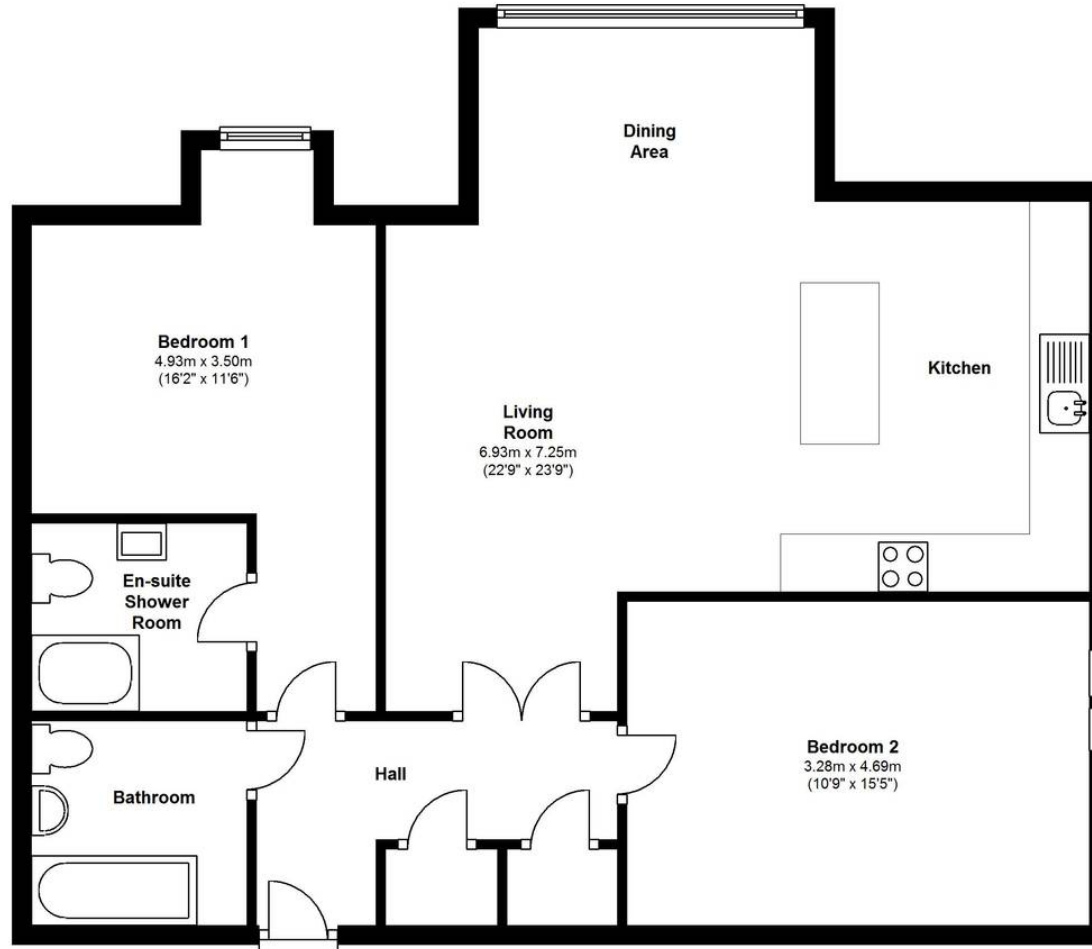
Flat 11

Situated in an exclusive development of twelve apartments, and within walking distance from the High Street. This second floor apartment benefits from off road parking, residents lift and a mature communal garden. Gas fired central heating and double glazed windows. The accommodation comprises of a hallway with a large storage cupboard. A bathroom with a WC, wash basin and panel bath with shower above. There are two large double bedrooms with the master bedroom benefiting from an en suite shower room. Of particular note is the large open plan living accommodation consisting of a dining area, living area and a kitchen. The room features an island forming part of the kitchen and an arched window overlooking the gardens.



Ground Floor

Approx. 84.6 sq. metres (910.9 sq. feet)



Total area: approx. 84.6 sq. metres (910.9 sq. feet)

This floorplan is to be used as guidance only. The accuracy of these plans cannot be verified.
Plan produced using PlanUp.

McFarlane Sales & Lettings

McFarlane Sales & Letting, 106 High Street - SN8 1LT

01672
514380

• marlborough@mcfarlaneproperty.com • www.mcfarlaneproperty.com/

mcfarlane
property.com