



mcfarlane

41 Dores Road, Swindon
Swindon

£220,000



41 Dores Road

Swindon, Swindon

Situated in the popular residential area of STRATTON, you will find this THREE BEDROOM mid terrace family home. The accommodation comprises Lounge/Dining Room, Kitchen and Bathroom on the ground floor, whilst upstairs there are 3 bedrooms, 2 of which are doubles and come with FEATURE FIREPLACES and a further single bedroom. Externally there is a good sized PRIVATE rear garden. The property benefits from a recently fitted boiler. We expect this property to attract interest so an early viewing is advised. Council Tax Band B Council Tax Estimate £1,710

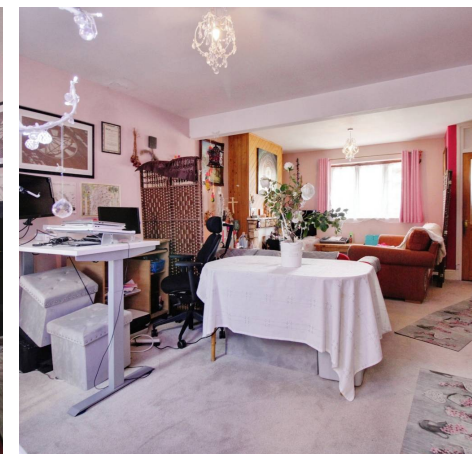
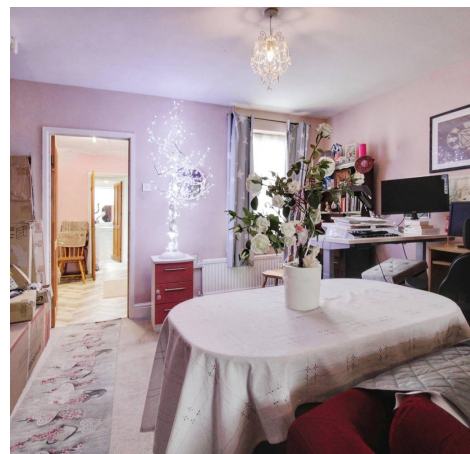
Council Tax band: B

Tenure: Freehold

EPC Energy Efficiency Rating: D

EPC Environmental Impact Rating: D

- FEATURE FIREPLACES
- PRIVATE REAR GARDEN
- THREE BEDROOMS
- LARGE LIVING SPACE
- EXCELLENT ROAD LINKS TO A419 AND M4
- NEW BOILER
- POPULAR STRATTON LOCATION
- DOWNSTAIRS BATHROOM



INTRODUCTION

Situated in the popular residential area of STRATTON, you will find this 3 bedroom mid terrace family home. The accommodation comprises Lounge/Dining Room, Kitchen and Bathroom on the ground floor, whilst upstairs there are 3 bedrooms, 2 of which are doubles and come with FEATURE FIREPLACES and a further single bedroom. Externally there is a good sized PRIVATE rear garden. The property benefits from a recently fitted boiler. We expect this property to attract interest so an early viewing is advised.

ENTRANCE PORCH

LOUNGE/DINER

Dimensions: 23' 7" x 14' 2" (7.19m x 4.32m).

UTILITY ROOM

FIRST FLOOR

BEDROOM 1

Dimensions: 14' 2" x 10' 6" (4.32m x 3.2m).

KITCHEN

Dimensions: 10' 0" x 8' 5" (3.05m x 2.57m).

BEDROOM 2

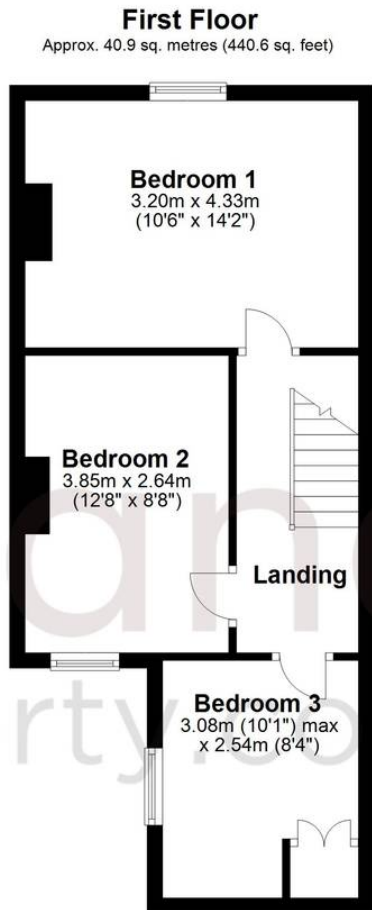
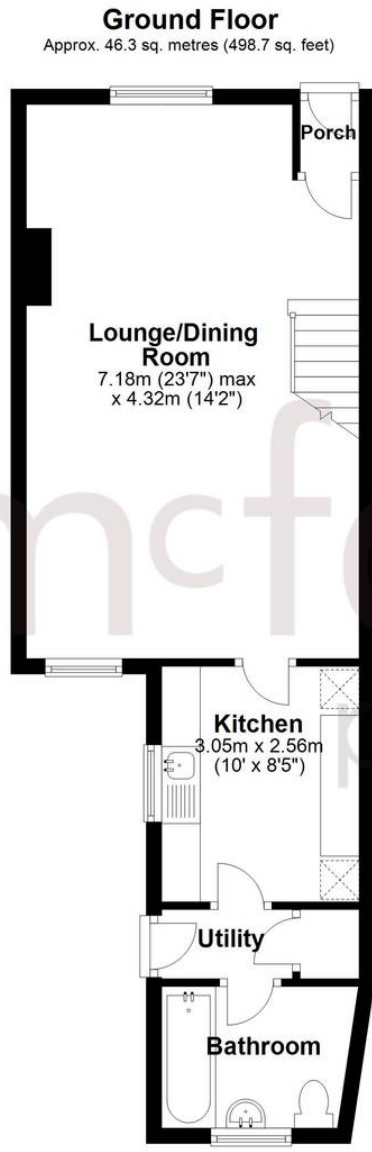
Dimensions: 12' 8" x 8' 8" (3.86m x 2.64m).

BEDROOM 3

Dimensions: 10' 1" x 8' 4" (3.07m x 2.54m).

BATHROOM





Total area: approx. 87.3 sq. metres (939.2 sq. feet)

North Swindon Sales

North Swindon, Redhouse Village Centre, Swindon - SN25 2FW

01793 296600 • swindon@mcfarlaneproperty.com • www.mcfarlaneproperty.com/