



1 Warrener Close, Swindon

Swindon

£425,000

mcfarlane
property.com



1 Warrener Close

Swindon, Swindon

A delightful 4 bedroom DETACHED home in a well situated CUL DE SAC in the Groundwell area of North Swindon. Presented in MOVE IN READY condition the accommodation offers, Entrance Hall with WC, living room, kitchen/dining room and utility room on the ground floor. Upstairs there is a GENEROUS sized master bedroom with ENSUITE, three further bedrooms and family bathroom. The garage has been part converted to create a useful WORKSHOP/STUDY and the rear garden has been LANDSCAPED whilst the front block paved driveway provides off street parking for 3 vehicles. Viewing is highly recommended

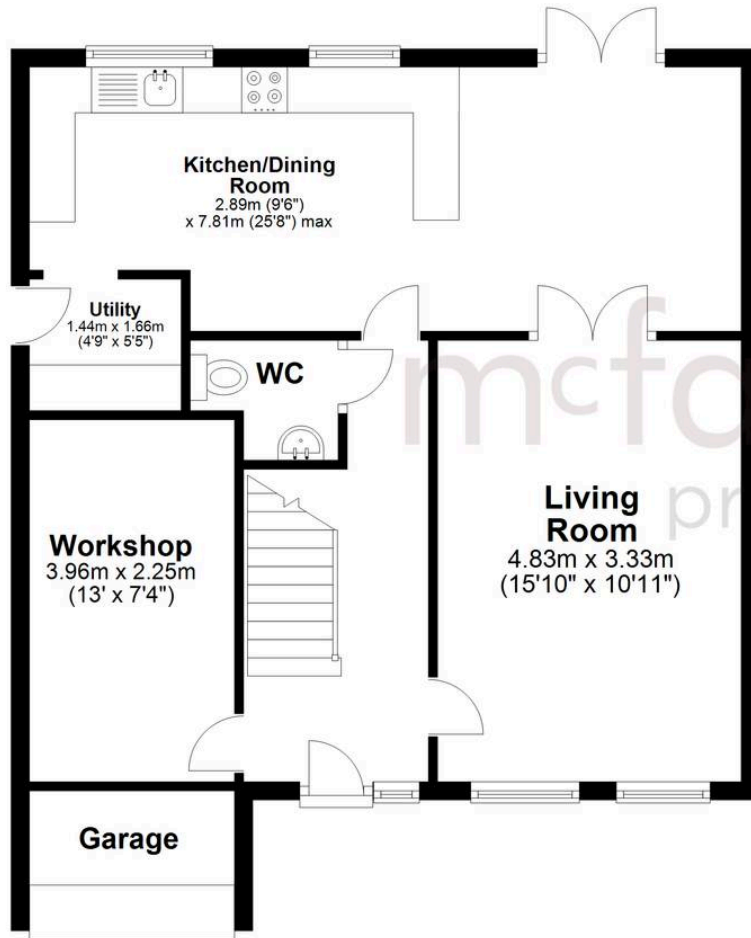
- DETACHED
- FOUR BEDROOM
- WELL PRESENTED
- CUL DE SAC LOCATION
- MASTER WITH ENSUITE
- KITCHEN/BREAKFAST ROOM
- LANDSCAPED GARDEN
- PART CONVERTED GARAGE





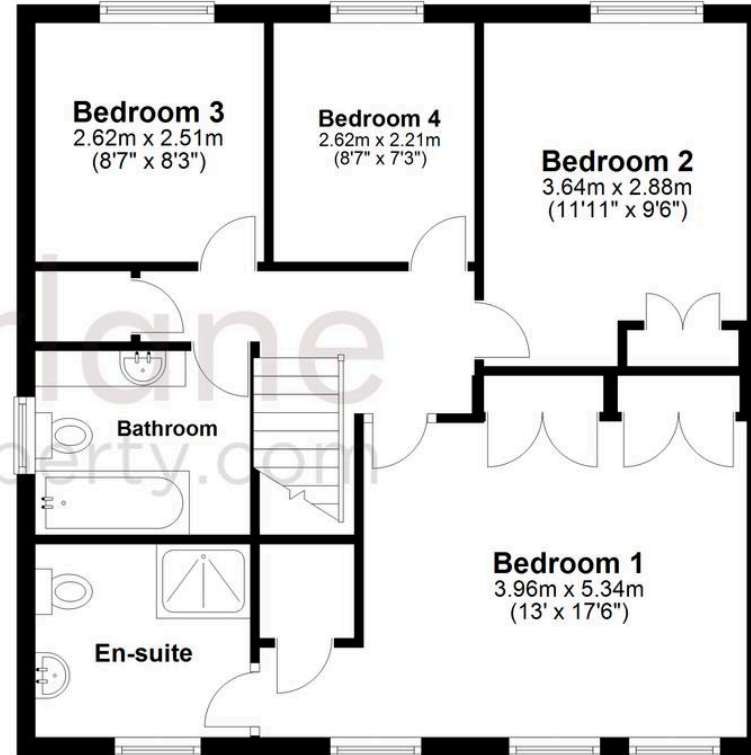
Ground Floor

Approx. 64.5 sq. metres (694.2 sq. feet)



First Floor

Approx. 60.6 sq. metres (652.2 sq. feet)



Total area: approx. 125.1 sq. metres (1346.3 sq. feet)

McFarlane Sales & Lettings

North Swindon, Redhouse Village Centre, Swindon - SN25 2FW

01793 296600 • swindon@mcfarlaneproperty.com • www.mcfarlaneproperty.com/