

# Compton

---

## Shoreditch

The Harrison  
134-146 Curtain Road  
EC2A 3BX

---

Available to rent from Summer 2025 - The Harrison is a distinctive 40,000 sq ft converted warehouse in the heart of Shoreditch

---

## For Rent

4,500 to 40,000 ft<sup>2</sup>

020 7101 2020  
[compton.london](https://compton.london)



# Compton

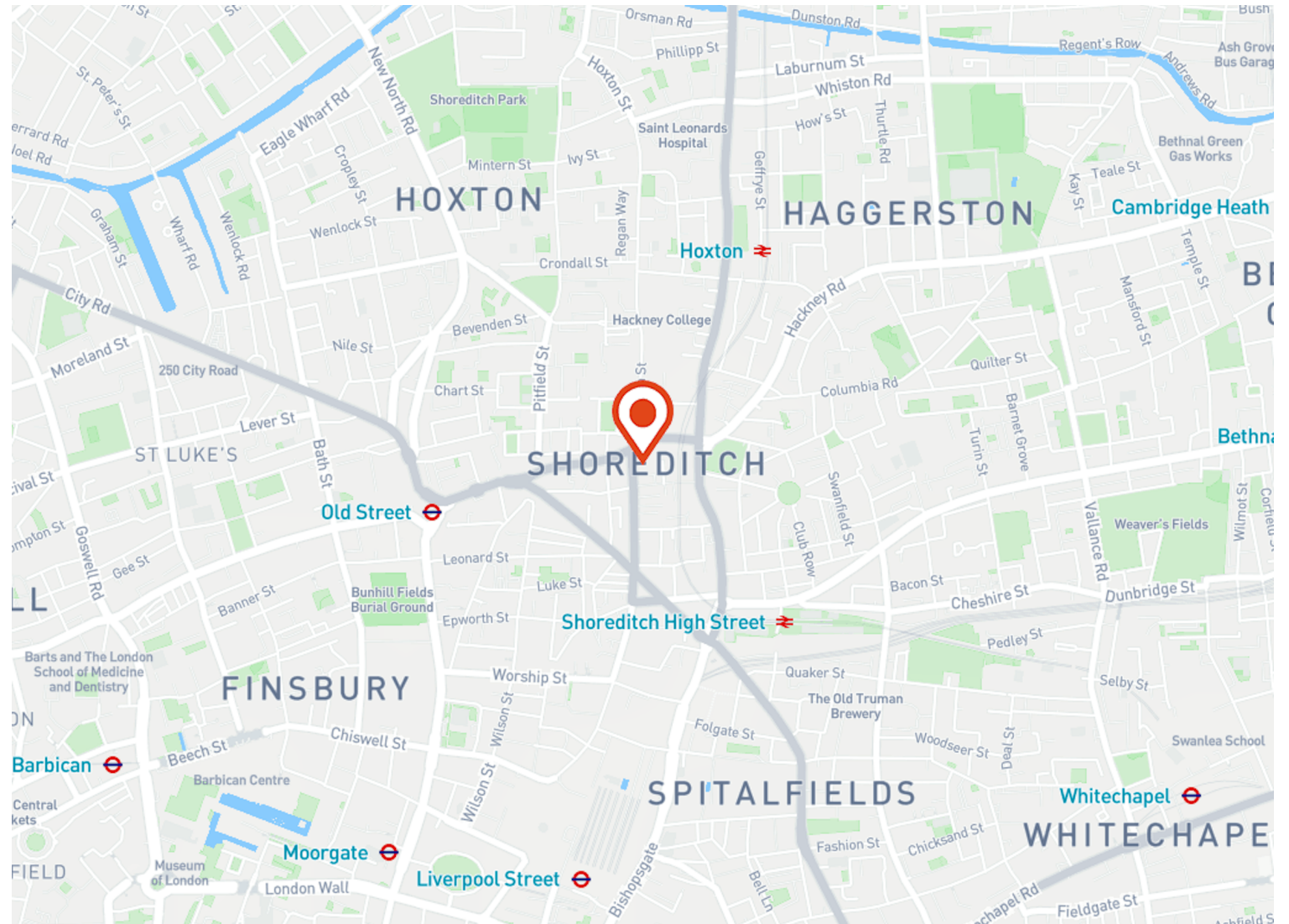
## Shoreditch

The Harrison  
134-146 Curtain Road  
EC2A 3BX

Available to rent from Summer 2025 - The Harrison is a distinctive 40,000 sq ft converted warehouse in the heart of Shoreditch

## For Rent

4,500 to 40,000 ft<sup>2</sup>



## Location

Curtain Road is located in the heart of Shoreditch, EC2, one of London's most vibrant and dynamic areas. Known for its wide mix of creative industries, tech start-ups, and trendy bars and restaurants, Shoreditch is a prime destination for both business and leisure.

The area is well-served by public transport, with several stations within walking distance. The closest stations are:

- Old Street Station (Northern Line and National Rail) - approximately a 7-minute walk.
- Shoreditch High Street Station (Overground) - about a 9-minute walk.
- Liverpool Street Station (Central, Circle, Hammersmith & City, and Metropolitan Lines, and National Rail) - around a 12-minute walk.

# Compton

---

## Shoreditch

The Harrison  
134-146 Curtain Road  
EC2A 3BX

---

Available to rent from Summer 2025 - The Harrison is a distinctive 40,000 sq ft converted warehouse in the heart of Shoreditch

---

## For Rent

4,500 to 40,000 ft<sup>2</sup>



# Compton

---

## Shoreditch

The Harrison  
134-146 Curtain Road  
EC2A 3BX

---

Available to rent from Summer 2025 - The Harrison is a distinctive 40,000 sq ft converted warehouse in the heart of Shoreditch

---

## For Rent

4,500 to 40,000 ft<sup>2</sup>



# Compton

---

## Shoreditch

The Harrison  
134-146 Curtain Road  
EC2A 3BX

---

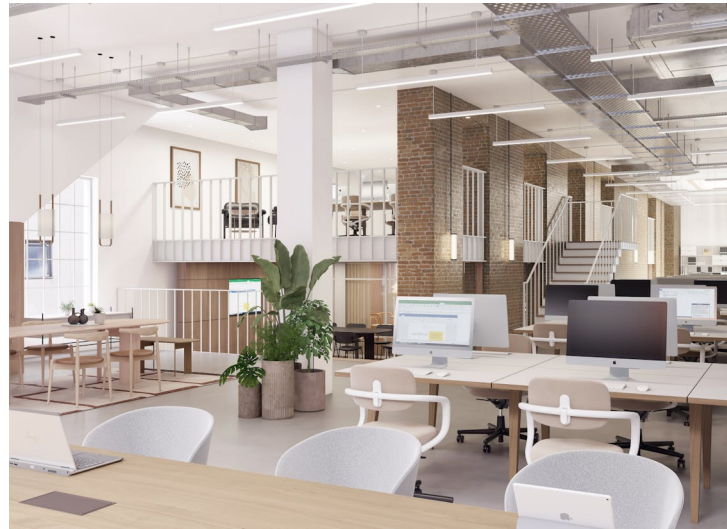
Available to rent from Summer 2025 - The Harrison is a distinctive 40,000 sq ft converted warehouse in the heart of Shoreditch

---

## For Rent

4,500 to 40,000 ft<sup>2</sup>

---



# Compton

---

## Shoreditch

The Harrison  
134-146 Curtain Road  
EC2A 3BX

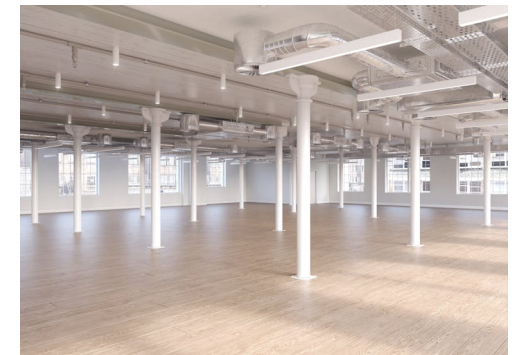
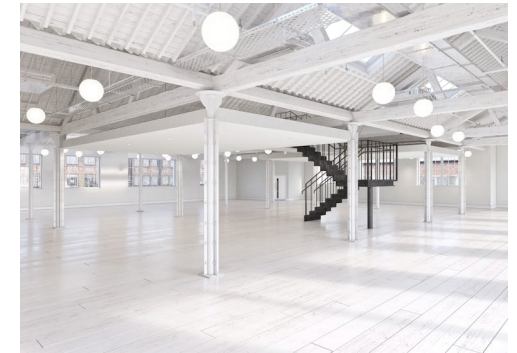
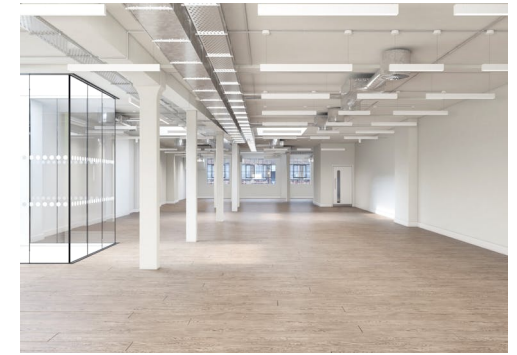
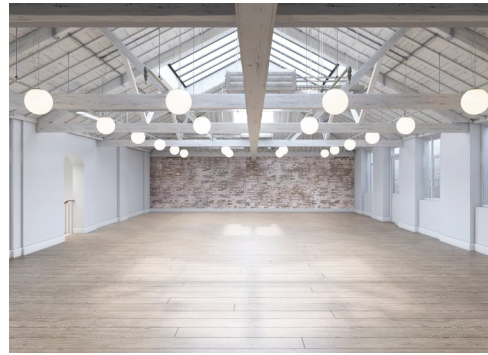
---

Available to rent from Summer  
2025 - The Harrison is a distinctive  
40,000 sq ft converted warehouse  
in the heart of Shoreditch

---

## For Rent

4,500 to 40,000 ft<sup>2</sup>



# Compton

---

## Shoreditch

The Harrison  
134-146 Curtain Road  
EC2A 3BX

---

Available to rent from Summer 2025 - The Harrison is a distinctive 40,000 sq ft converted warehouse in the heart of Shoreditch

---

## For Rent

4,500 to 40,000 ft<sup>2</sup>

---

## Amenities

- Available to rent from Summer 2025
- 40,000 sq ft Grade II listed converted warehouse
- 5 floors of unique office space
- 3,700 sq ft of communal outdoor space
- 4.5m maximum floor to ceiling height
- Targeting BREEAM excellent
- Targeting EPC rating 'A'
- 32 secure cycle racks
- 7 unisex communal showers

---

## Description

Since 1881, this Grade II listed warehouse has been recognised as one of the most architecturally exceptional Shoreditch buildings. The Harrison makes sure it stays that way.

Built together, through a collaborative partnership of industry leaders. Remembering the past, enhancing the present and protecting the future, to create a workplace that is holistically sustainable, crafted, and simply charming – on every level.

At the epicentre of Shoreditch, The Harrison is still considered one of the finest examples of Victorian engineering prowess. Originally designed by Richard Crease Harrison & Son, the warehouse and showroom was built as a single block between 1881 and 1882. In 1887, it was developed further and extended. Furniture of all types has been manufactured and distributed throughout the British Empire from this very building

The Harrison enhances and celebrates original features and London stock brickwork, while making sure the building speaks to its modern surroundings. Each space is entirely unique, having been restored in such a way as to capture the distinctive character of the original design. To achieve the unexpected, Anomaly redefined the concept of sustainability, putting environmental considerations at the heart of every decision.

# Compton

---

## Shoreditch

The Harrison  
134-146 Curtain Road  
EC2A 3BX

---

Available to rent from Summer 2025 - The Harrison is a distinctive 40,000 sq ft converted warehouse in the heart of Shoreditch

---

## For Rent

4,500 to 40,000 ft<sup>2</sup>

---

## Content

View on Website



---

## Developer

Aviva Investors

## Tenure

Leasehold

## Lease Term

New full repairing & insuring lease available for a term by arrangement direct from the Landlord

## Availability

Summer 2025

## VAT

The property is elected for VAT

## Legal Costs

Each party to be responsible for its own legal and all other professional costs incurred in the transaction

## Local Authority

The London Borough of Hackney



# Compton

---

## Shoreditch

The Harrison  
134-146 Curtain Road  
EC2A 3BX

---

Available to rent from Summer 2025 - The Harrison is a distinctive 40,000 sq ft converted warehouse in the heart of Shoreditch

---

## For Rent

4,500 to 40,000 ft<sup>2</sup>

---

## Floor Areas & Outgoings

---

The accommodation comprises the following areas:

Name	sq ft	Availability
4th - Mezzanine	430	Coming Soon
4th	6,523	Coming Soon
3rd	6,576	Coming Soon
2nd	8,116	Coming Soon
1st	13,110	Coming Soon
Ground - Mezzanine	1,065	Coming Soon
Ground	3,509	Coming Soon
Total	39,329	

# Compton

---

## Contact Us

All appointments to view must be arranged via sole agents, Compton, through —

Jake Kinsler  
[jk@compton.london](mailto:jk@compton.london)  
07840 638668

Shaun Simons  
[ss@compton.london](mailto:ss@compton.london)  
07788 423131

