



- Delightful two bedroom Town House
- Accommodation over three floors
- Spacious Lounge/Diner
- Stunning bathroom with access to terrace
- Ideal home or investment

Margaret Street, Brighton, BN2 1TS

Asking Price Of £450,000

A delightful two bedroom town house situated in a highly desirable location of Kemp Town. The property is set over three floors with a delightful open plan lounge/dining room, modern fitted, two double bedrooms, family bathroom with access to a roof terrace. This property would make an ideal investment or air b and b.



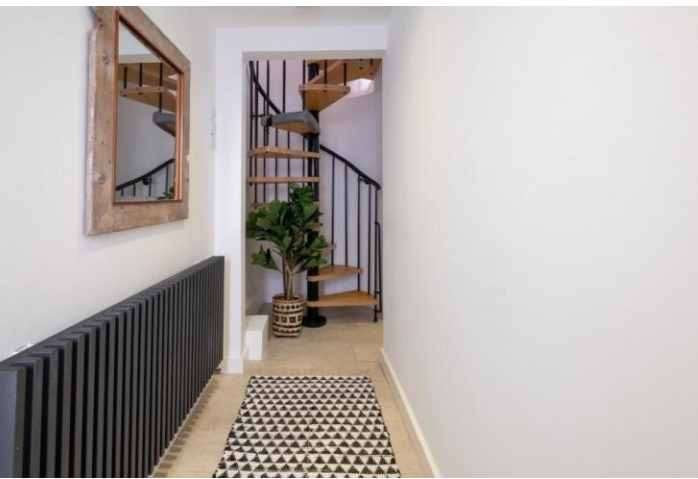
Property Description

If you're looking for a property that epitomises that bohemian meets contemporary feel of Brighton City centre living then look no further! Margaret Street is delightful two-bedroom town house nestled in the heart of the vibrant Kemptown Village with accommodation over three floors. This is a property that will suit all types of buyers as it is the perfect main residence, a wonderful holiday / second home by the sea or a fantastic investment to rent out as a long-term rental or air bnb!

On the ground floor you have a spacious open plan living/dining room, modern fitted kitchen and additional storage. The first floor gives you access to a good size double bedroom, family bathroom with access to a delightful terrace. One the top floor you have an additional spacious double bedroom.

For anyone who commutes, it is a short walk to Brighton mainline railway station with its' direct links to London and Gatwick. Brighton's Kemptown village is well known & highly admired for its' wide & varied array of boutique shops, street markets, trendy pubs, coffee houses, cafes and restaurants as well as being home to the Theatre Royal. Churchill Square shopping precinct and our famous seafront including Palace pier are also just a leisurely stroll away making this a very exciting place to live!





Accommodation

GROUND FLOOR

LIVING/DINING ROOM
17' 1" x 10' 6" (5.21m x 3.2m)

KITCHEN
6' 3" x 5' 3" (1.91m x 1.6m)

STORAGE CUPBOARD

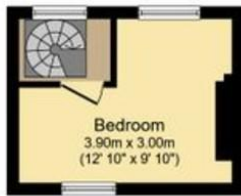
FIRST FLOOR

BEDROOM
13' 1" x 10' 2" (3.99m x 3.1m)

BATHROOM

ROOF TERRACE

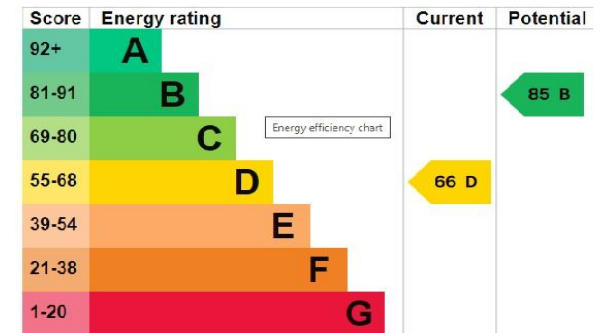
SECOND FLOOR
12' 10" x 9' 10" (3.91m x 3m)



Second Floor

Total floor area 68.0 sq. m. (732 sq. ft.) approx

This floor plan is for illustrative purposes only. It is not drawn to scale. Any measurements, floor areas (including any total floor area), openings and orientation are approximate. No details are guaranteed, they cannot be relied upon for any purpose and they do not form part of any agreement. No liability is taken for any error, omission or misstatement. A party must



Agents Note: Whilst every care has been taken to prepare these sales particulars, they are for guidance purposes only. All measurements are approximate and for general guidance purposes only and whilst every care has been taken to ensure their accuracy, they should not be relied upon and potential buyers are advised to recheck the measurements

112 Western Road
Brighton
East Sussex
BN1 2AB

www.phillipsandstill.co.uk
01273 771111
westernrd@phillipsandstill.co.uk

Mon-Fri: 8.30am - 6pm
Sat: 9am - 4pm

