

Joyce Heeps Homes Ltd
E.K. Business Park
14 Stroud Road
East Kilbride
G75 0YA



Alberta Avenue, Westwood, East Kilbride, G75 8AE

Joyce Heeps Homes are delighted to market this immaculate two-bedroom, 2nd (top) floor flat is very close to Kilbride Town Centre, Train station and village. It benefits from having gas central heating, UPVC double glazing and is within a very well-maintained block.



Features

Gas central heating

UPVC double glazing

Modern kitchen & bathroom

Within a very well-maintained block
with communal garden/drying area

Freshly decorated

Open outlook

Close to town centre, Village and
Train Station

Regular bus services

East Kilbride's Local Estate Agent

www.joyceheepshomes.com
info@joyceheepshomes.co.uk

Joyce Heeps Homes Ltd
E.K. Business Park
14 Stroud Road
East Kilbride
G75 0YA



Description

This immaculate two-bedroom 2nd floor flat is a credit to the current owner.



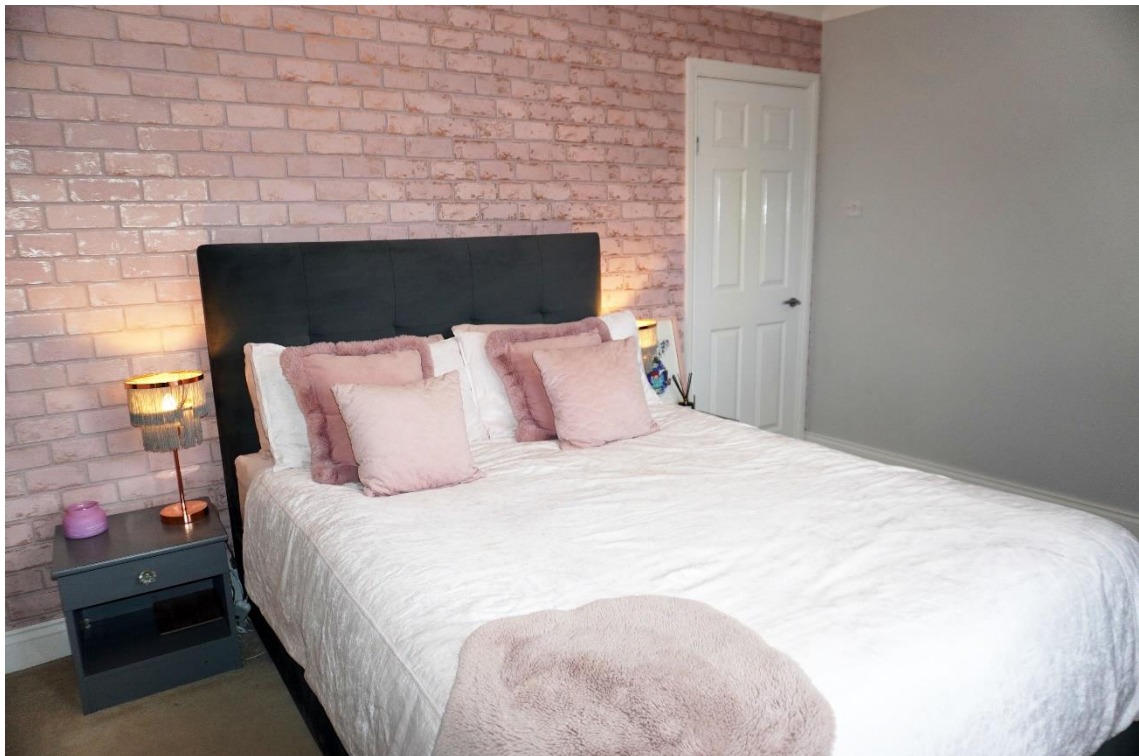
East Kilbride's Local Estate Agent

www.joyceheepshomes.com
info@joyceheepshomes.co.uk

Joyce Heeps Homes Ltd
E.K. Business Park
14 Stroud Road
East Kilbride
G75 0YA



It comprises of the hallway, spacious lounge/ dining room with box bay window, modern fitted kitchen, stylish bathroom and two double bedrooms.



East Kilbride's Local Estate Agent

www.joyceheepshomes.com
info@joyceheepshomes.co.uk

Joyce Heeps Homes Ltd

E.K. Business Park
14 Stroud Road
East Kilbride
G75 0YA



**Joyce Heeps
HOMES**

01355 571883

The modern kitchen has high gloss cabinets, integrated electric oven, hob and hood and has space for freestanding appliances.



East Kilbride's Local Estate Agent

www.joyceheepshomes.com
info@joyceheepshomes.co.uk

Joyce Heeps Homes Ltd
E.K. Business Park
14 Stroud Road
East Kilbride
G75 0YA



The stylish bathroom has a white suite, electric shower over bath with fixed glass screen and vanity storage.



East Kilbride's Local Estate Agent

www.joyceheepshomes.com
info@joyceheepshomes.co.uk

Joyce Heeps Homes Ltd

E.K. Business Park
14 Stroud Road
East Kilbride
G75 0YA



**Joyce Heeps
HOMES**

01355 571883

The flat has been freshly decorated throughout in neutral tones and is very well-maintained both internally and externally and has a communal drying and garden area.



East Kilbride's Local Estate Agent

www.joyceheepshomes.com
info@joyceheepshomes.co.uk

Joyce Heeps Homes Ltd
E.K. Business Park
14 Stroud Road
East Kilbride
G75 0YA



The council tax band is B

Location

East Kilbride Town Centre, Village, regular bus services and Train Station are close at hand, offering high street shopping, restaurants, and bars, and sports and recreational facilities. It benefits from excellent public transport links both bus and rail and motorway links provide access in and around the central belt and beyond.



Measurements

Lounge/dining room 16'0" x 12'11"

Bedroom 10'9" x 10'0"

Kitchen 13'3" x 6'9"

Shower room 9'6" x 5'2"

Bedroom 9'8" x 14'7"

East Kilbride's Local Estate Agent

www.joyceheepshomes.com
info@joyceheepshomes.co.uk

Joyce Heeps Homes Ltd
E.K. Business Park
14 Stroud Road
East Kilbride
G75 0YA



Joyce Heeps Homes Ltd.

For more information or to advise your interest please contact:

Joyce Heeps Homes Ltd
East Kilbride Business Park
Stroud Road
East Kilbride
G75 0YA

Tel: 01355 571 883
Email: joyce@joyceheepshomes.co.uk

Please note that this schedule has been prepared by us, based on the information provided by our client. Photographs and text are for illustrative purposes only. We believe them to be correct, however, no guarantee is offered or implied. If there is any aspect of this schedule that you wish clarified or that you find misleading, please contact our office where further information is available.

No tests have been made of services, equipment or fittings. No warranty is given or implied as to the condition of buildings services, fixtures, fittings etc. All measurements, distances and acres are approximate. Fixtures, fittings and other items are not included unless specified.



East Kilbride's Local Estate Agent

www.joyceheepshomes.com
info@joyceheepshomes.co.uk