



Park Road

Faringdon

£500,000



Park Road

Faringdon

The beautifully open kitchen / dining / family room extends the length of the ground floor, the kitchen features a set of French doors and desirable island style worktop space. The lounge has a French doors to the rear garden and the home office is located near the front of the home. Upstairs are the four double bedrooms, the master with en suite and stylish fitted wardrobes.

Council Tax band: F

Tenure: Freehold

- NEW HOME
- FLOORING INCLUDED
- DETACHED
- GARAGE AND DRIVEWAY PARKING
- KITCHEN / DINING / FAMILY ROOM
- SEPARATE LOUNGE
- STUDY
- UTILITY AREA AND WC
- MASTER EN-SUITE AND FAMILY BATHROOM
- FOUR DOUBLE BEDROOMS



Entrance Hall

Lounge

15' 9" x 11' 9" (4.79m x 3.59m)

Kitchen / Dining / Family

26' 5" x 14' 0" (8.05m x 4.26m)

Study

7' 4" x 10' 4" (2.23m x 3.16m)

Utility

WC

Landing

Bedroom 1

9' 11" x 12' 3" (3.01m x 3.73m)

En-suite

Bedroom 2

12' 0" x 11' 8" (3.66m x 3.55m)

Bedroom 3

9' 7" x 13' 11" (2.93m x 4.24m)

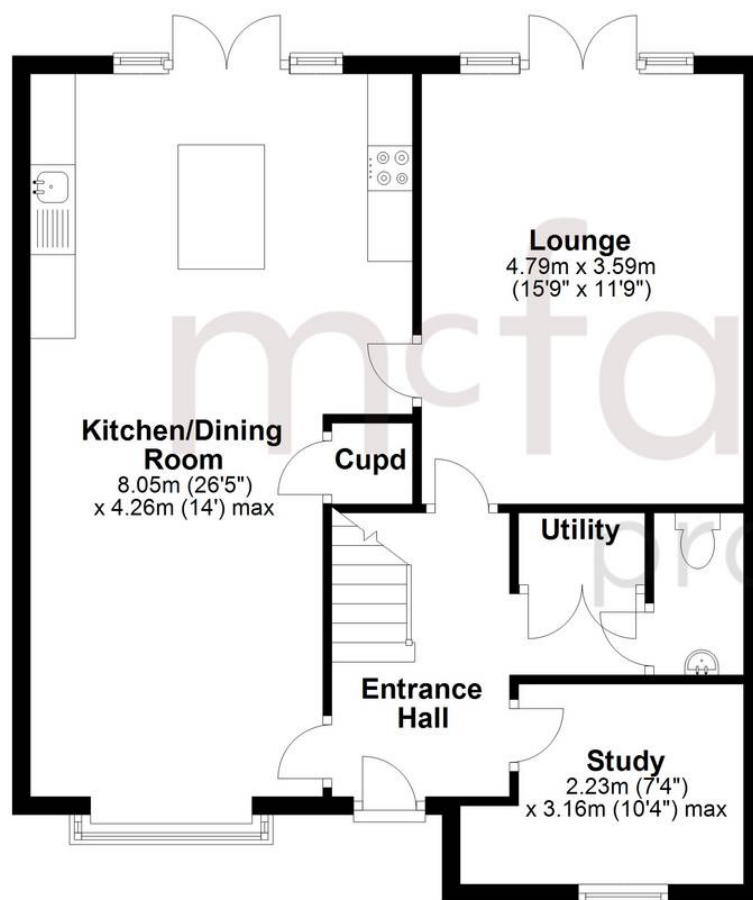
Bedroom 4

7' 6" x 12' 1" (2.28m x 3.69m)

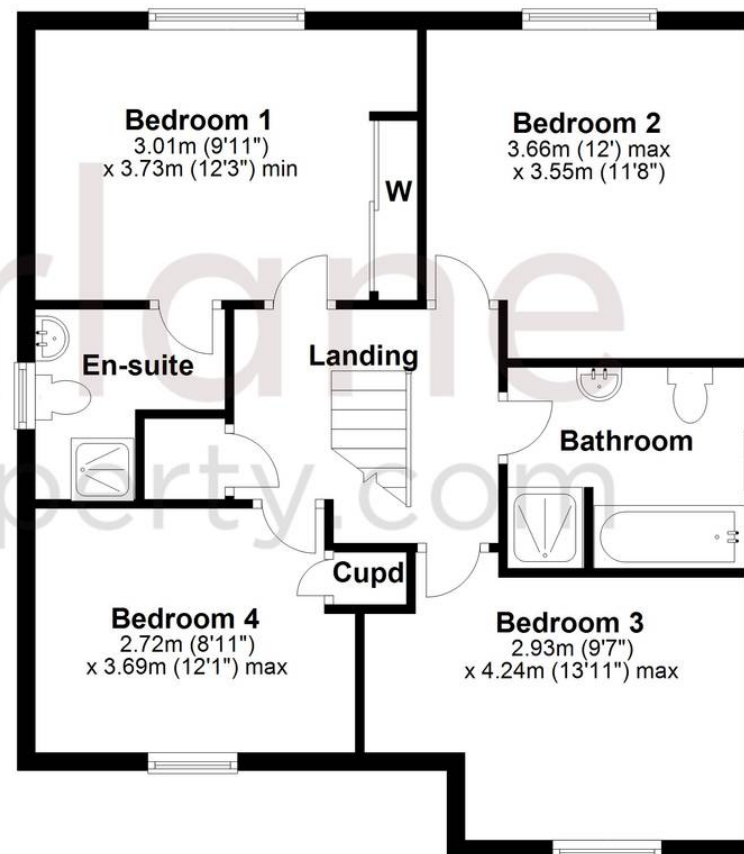
Bathroom



Ground Floor



First Floor



Marlborough Sales

McFarlane Sales & Letting, 106 High Street - SN8 1LT

01672 514380 • marlborough@mcfarlaneproperty.com • www.mcfarlaneproperty.com/