



7 Bank Terrace, Simonstone

£375,000 Leasehold

An exquisite four-bedroom mid-terraced property, located in the highly sought-after area of Simonstone in the Ribble Valley. Set on the prestigious Bank Terrace, this stunning home has been meticulously renovated to an exceptional standard, offering a blend of modern luxury and beautiful interior design.

Council Tax band: B

Tenure: Leasehold



An exquisite Edwardian four-bedroom elevated mid-terraced property, located in the highly sought-after area of Simonstone in the Ribble Valley. Set on the prestigious Bank Terrace, this stunning home has been meticulously renovated to an exceptional standard, offering a blend of modern luxury and beautiful interior design.

Upon entering, you are greeted by a spacious and inviting hallway that sets the tone for the impressive interior. The first reception room is a true highlight, featuring an elegant design with an open gas fire and a large window that floods the space with natural light. The second reception room is equally captivating, boasting stylish décor and a cosy ambiance enhanced by a charming wood burner.

The heart of this home is the bespoke kitchen diner, where a striking blue colour palette and decorative mosaic tiling create a beautiful, contemporary space. With ample storage in both base and eye-level units, integral appliances, and generous dining space, this kitchen is perfect for both everyday living and entertaining guests. A convenient two-piece cloakroom completes the ground floor.

Upstairs, the first floor offers three well-appointed bedrooms, each designed with relaxation in mind. The modern three-piece bathroom in white adds an extra touch of luxury to the home. The second floor reveals a spacious double bedroom, complete with a dressing area and an en-suite shower room, making it a perfect relaxing retreat.

- Highly Desirable Simonstone Location
- Tastefully Restored Lounge with Decorative Feature Fireplace
- Stunning & Spacious Reception Room with Multi-Fuel Stove
- Beautiful Bespoke Fitted Kitchen Diner
- Four Bedrooms with En-suite To Master
- Detached Garage & Off Road Parking For Two Cars
- Surrounded By Impressive Gardens and Uninterrupted Views
- Stylish Edwardian Elevated Terraced Home With Immaculate Interior
- Fully Renovated Property



stones young

Hallway

Original restored wood flooring, stairs to first floor, under stairs storage, double glazed frosted uPVC window and front door, panel radiator.

Wc

Tiled flooring, 2-pce white suite comprising wall mounted sink, low level w.c., frosted double glazed uPVC window.

Lounge

Original wood floor boards, ceiling coving, decorative open fire with tiled hearth, wood surround, double glazed uPVC window, panel radiator.

Kitchen

Tiled flooring, bespoke solid wood fitted wall and base units hand painted in Farrow and Ball with contrasting solid oak work surfaces, double electric oven, x4 ring gas hob, Belfast sink, extractor fan, tiled splash backs, integral washer dryer, bin, fridge freezer, ceiling spot lights, cupboard housing boiler, space for dining table, bespoke larder cupboard, double glazed uPVC window and door leading to the rear garden, panel radiator.

Reception

Original wood flooring, ceiling coving, multi fuel stove, double glazed uPVC window, panel radiator.

Landing

Carpet flooring, x2 double glazed uPVC windows, stairs to second floor, panel radiator.

Bedroom

Original floor boards, storage cupboard, double glazed uPVC window, panel radiator.

Bedroom 2

Carpet flooring, fitted wardrobes, double glazed uPVC window, panel radiator.

Bedroom 3

Carpet flooring, double glazed uPVC window, panel radiator.

Bedroom 4

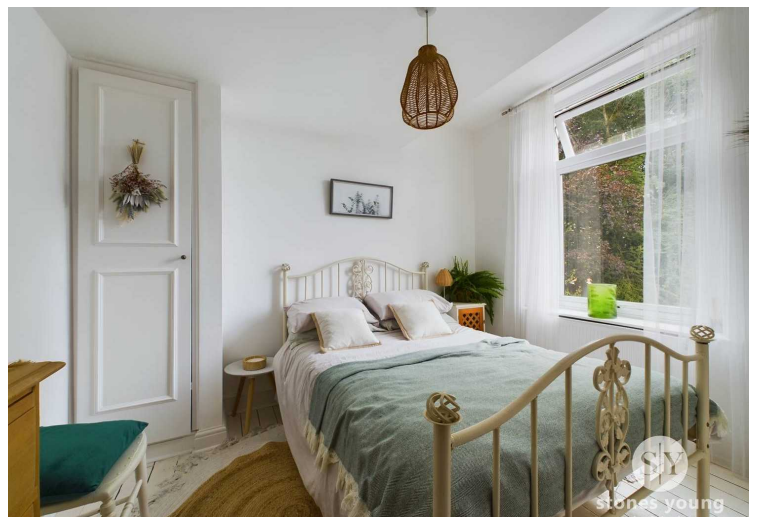
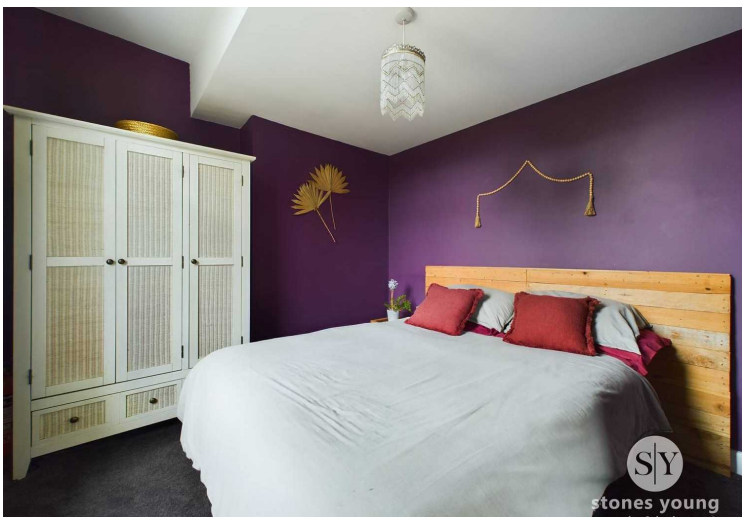
Carpet flooring, x3 velux windows, ceiling spot lights.

En Suite

Tiled flooring, three piece in white comprising of electric shower enclosure, basin and wc, under eaves storage.

Bathroom

Three piece in white, uPVC double glazed window, radiator.





Floor 0



Floor 1



Floor 2



Approximate total area⁽¹⁾

1327.62 ft²

Reduced headroom

75.56 ft²

(1) Excluding balconies and terraces

Reduced headroom

----- Below 5 ft

While every attempt has been made to ensure accuracy, all measurements are approximate, not to scale. This floor plan is for illustrative purposes only.

Calculations are based on RICS IPMS 3C standard.

GIRAFFE360