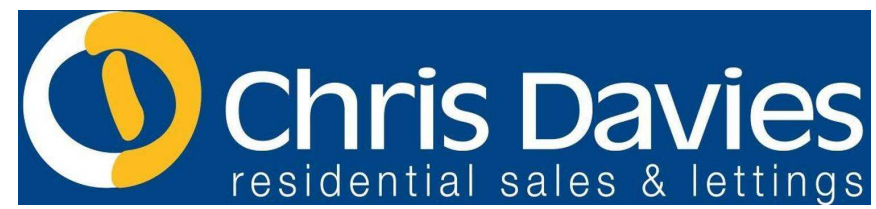




17
HEOL BROADLAND



17 Heol Broadland, Barry
£385,000



17 Heol Broadland

Barry, Barry

Charming four bedroom detached home in a sought-after location. Spacious layout with separate rooms for entertaining. Double driveway, double garage and a lush garden with a seating area. Conveniently close to amenities and transport links. EPC D63. Don't miss this family home opportunity!

Council Tax band: F

Tenure: Freehold

EPC Energy Efficiency Rating: D

EPC Environmental Impact Rating: D

- SEPARATE LOUNGE, DINING ROOM AND KITCHEN
- FOUR BEDROOMS
- FAMILY BATHROOM, EN-SUITE TO MASTER PLUS DOWNSTAIRS WC
- DOUBLE GARAGE PLUS DOUBLE DRIVEWAY PROVIDING AMPLE PARKING
- LARGE FULLY ENCLOSED REAR GARDEN
- CLOSE PROXIMITY TO LOCAL AMENITIES
- EXCELLENT TRANSPORT LINKS
- EPC D63





Hallway

Access into the hallway via a composite front door with opaque glazing. The hallway is tiled and has smooth walls with dado rails and a smooth coved ceiling. Doors lead to the WC, lounge, kitchen and a handy storage cupboard. Wooden stairs to the left lead up to the first floor.

Lounge

16' 6" x 11' 5" (5.03m x 3.48m)

Laminate wood effect flooring, smooth walls and a textured coved ceiling. A large front aspect window, a radiator and double opening doors leading to the dining room.

Dining Room

10' 5" x 9' 9" (3.18m x 2.97m)

A continuation of the laminate wood effect flooring from the lounge, smooth walls and a textured coved ceiling. A radiator, a door leading into the kitchen and double opening doors leading to the garden.

Kitchen

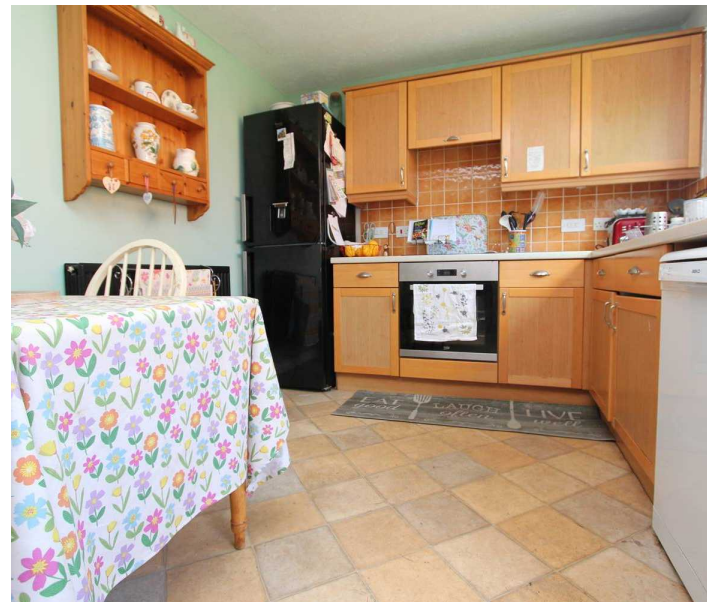
14' 5" x 9' 3" (4.39m x 2.82m)

Vinyl tiled flooring, smooth walls and a textured ceiling. Matching wooden eye and base level units with complementing light countertops with a one and a half bowled stainless steel sink inset with a stainless steel mixer tap overtop. An integrated single oven, four ring electric hob and extractor. Space for a fridge/freezer, dishwasher, washing machine and tumble dryer. A door leading to the dining room and a radiator. A large rear aspect window and a uPVC door leading out into the garden.

Downstairs WC

5' 6" x 2' 10" (1.68m x 0.86m)

A white WC and a white wall mounted wash basin with stainless steel pillar taps. An opaque side aspect window and a radiator. Half height tiling.





Landing

Wooden flooring, smooth walls with dado rails and a textured covered ceiling. Loft access. Doors leading off to four bedrooms and a family bathroom.

Bedroom One

12' 7" x 11' 10" (3.84m x 3.61m)

Carpeted with partially smooth/partially papered walls and a textured covered ceiling. A front aspect window, a radiator, a built in double wardrobe and a door leading to an en-suite shower room.

Measurements exclude the depth of the built in wardrobe.

En-suite

5' 6" x 5' 0" (1.68m x 1.52m)

Tiled floor and half height wall tiling. A three piece white suite comprising a WC, vanity wash basin with a stainless steel mixer tap ovetop and a walk in shower cubicle which is fully tiled with a stainless steel thermostatic shower inset and a glass shower screen. An opaque side aspect window, a towel radiator and an extractor fan. Measurements exclude the depth of the walk in shower.

Bedroom Two

12' 2" x 10' 7" (3.71m x 3.23m)

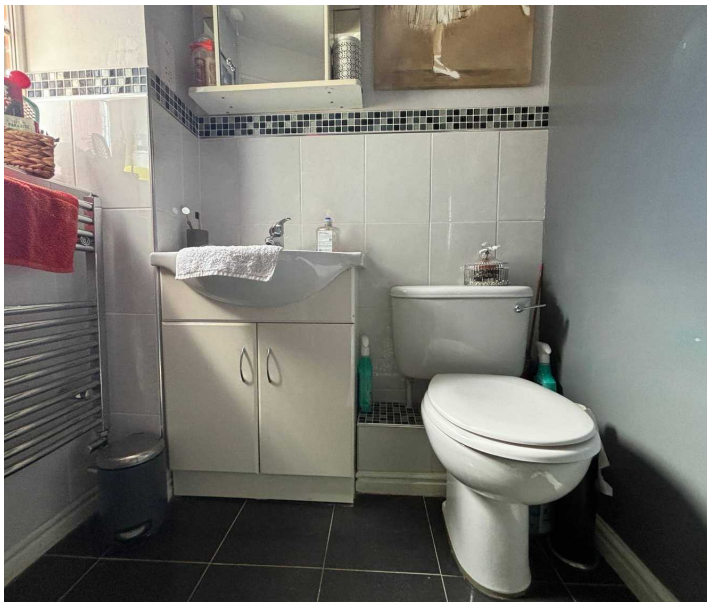
Wooden flooring, partly smooth/partially papered walls and a textured covered ceiling. A large front aspect bay window, a radiator and a double built in wardrobe.

Measurements exclude the depth of the bay and built in wardrobe.

Bedroom Three

12' 11" x 8' 7" (3.94m x 2.62m)

Laminate wood effect flooring, smooth walls and a textured covered ceiling. A rear aspect window and a radiator.





Bedroom Four

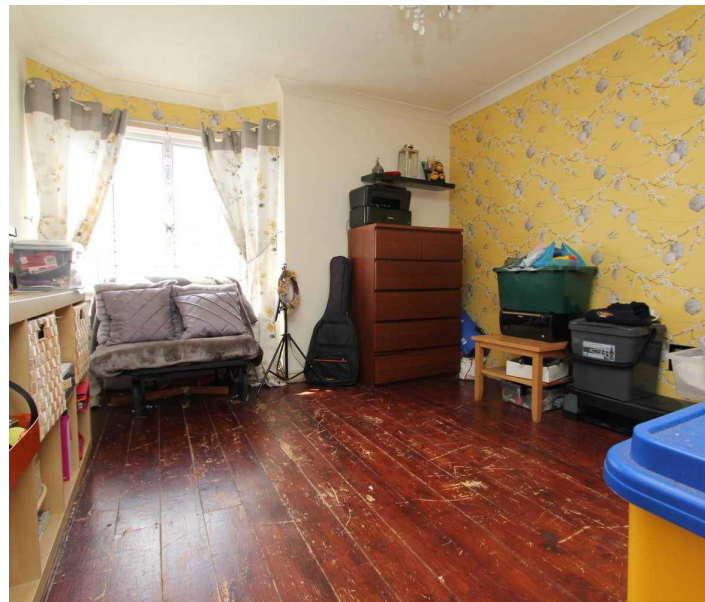
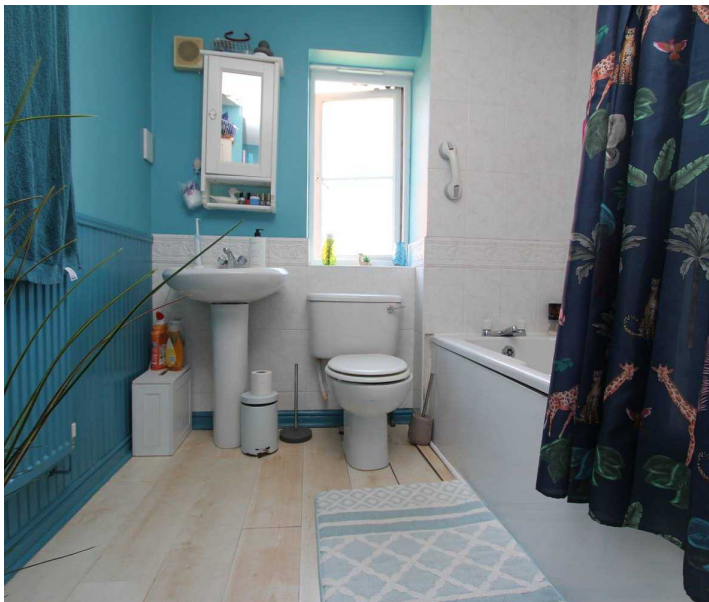
9' 4" x 8' 5" (2.84m x 2.57m)

Wooden flooring, partly smooth/partly papered walls and a textured coved ceiling. A rear aspect window and a radiator.

Family Bathroom

10' 3" x 6' 11" (3.12m x 2.11m)

Laminate wood effect flooring, smooth walls with a dado rail and a textured coved ceiling. A three piece white suite comprising a WC, a pedestal wash basin with a stainless steel mixer tap and a white WC with a stainless steel mixer tap and a stainless steel thermostatic shower inset. Full height tiling within the bath/shower and a tiled splashback around the WC and sink. An opaque rear aspect window, a radiator and a storage cupboard.





FRONT GARDEN

A double driveway and a double garage provide ample parking. To the right there is an area of lawn with some well established shrubbery and a tree.

REAR GARDEN

Step out of the kitchen or dining room onto a paved pathway that runs across the property. There is a large area of lawn with some stepping stones leading to a seating area to the rear (on the lefthand side of the garden). To the left of the property there is a recess providing more garden space, with access to the garage and a side gate. The garden is fully enclosed by well maintained fencing and has some well established shrubbery and a tree.

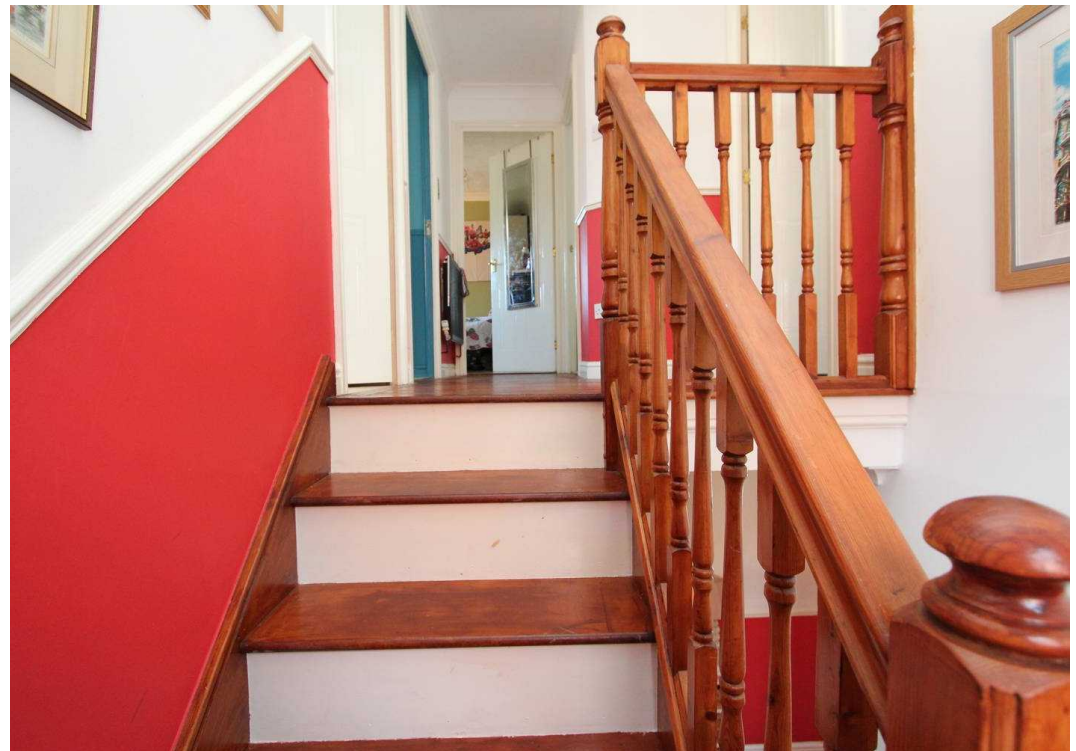
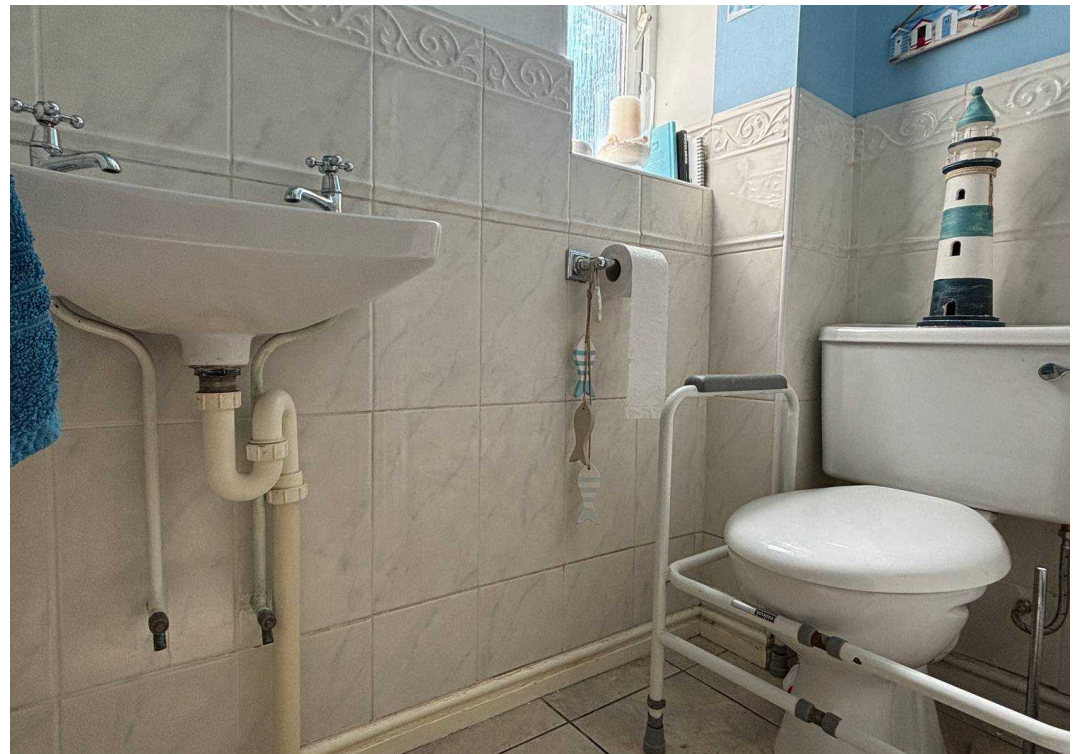
DOUBLE GARAGE

2 Parking Spaces

DRIVEWAY

2 Parking Spaces







Chris Davies Estate Agents

Chris Davies Estate Agents, 24 High Street - CF62 7EA

01446 700007

barry@chris-davies.co.uk

www.chris-davies.co.uk/

HELPFUL INFORMATION - whilst we try to ensure our sales particulars are complete, accurate and reliable, if there is any point which is particularly important, please ask and we will be happy to check it, including specific information in respect of commuting links, surroundings, noise, views, or condition. For security purposes, applicants who wish to view will need to provide their name, address and telephone number. All measurements are approximate to the widest and longest points. Buyers are advised to instruct a solicitor to obtain verification of tenure and a surveyor to check that appliances, installations and services are in satisfactory condition.