



4 Osborne Place Lockyer Street, Plymouth, PL1 2PU

Offers in Region of £220,000 Share of Freehold EPC: D



4 Osborne Place

Lockyer Street, Plymouth

Exquisite 1-bed apartment near Hoe Promenade. Stylish kitchen diner, balcony with stunning views, high ceilings throughout, modern shower room. Includes off-road parking and residence parking permit. Share of Freehold.

Council Tax band: B

Tenure: Share of Freehold

- Large One Bedroom First Floor Apartment
- Stones throw from The Hoe
- Fitted Kitchen Diner
- Balcony with Views of the Breakwater
- Off Road Parking to the Rear
- Separate Storage Unit
- 13ft Ceiling Heights
- Contemporary Shower Room



4 Osborne Place

Lockyer Street, Plymouth

Step into this exquisite one-bedroom first-floor apartment, just a stone's throw away from The Hoe Promenade. This property offers a blend of sophistication and style in a prime location.

As you enter, you are greeted by the spacious and elegantly designed open-plan kitchen diner, perfect for entertaining guests or enjoying quiet evenings in. The fitted kitchen boasts integrated appliances and sleek finishes that elevate the space.

The highlight of this apartment is the balcony that offers stunning views of the Hoe & Breakwater beyond, providing a serene retreat to unwind and soak in the scenery. With french doors that seamlessly connect the interior and exterior spaces, the balcony is an extension of the kitchen area, creating a harmonious flow of light and space.

The bedroom is a sanctuary of comfort, featuring high ceilings that add to the sense of grandeur and contemporary design elements that create a relaxing ambience. The separate storage unit provides ample space to keep your belongings organised and out of sight.

The modern and stylish shower room continues the theme of luxury, with high-end fixtures and finishes that offer a comforting experience at home. The attention to detail in every aspect of this apartment is evident, creating a sense of opulence and refinement throughout.

The property also benefits from off road parking and access to a residence parking permit from Plymouth City Council.



4 Osborne Place

Lockyer Street, Plymouth

Tenure & Services

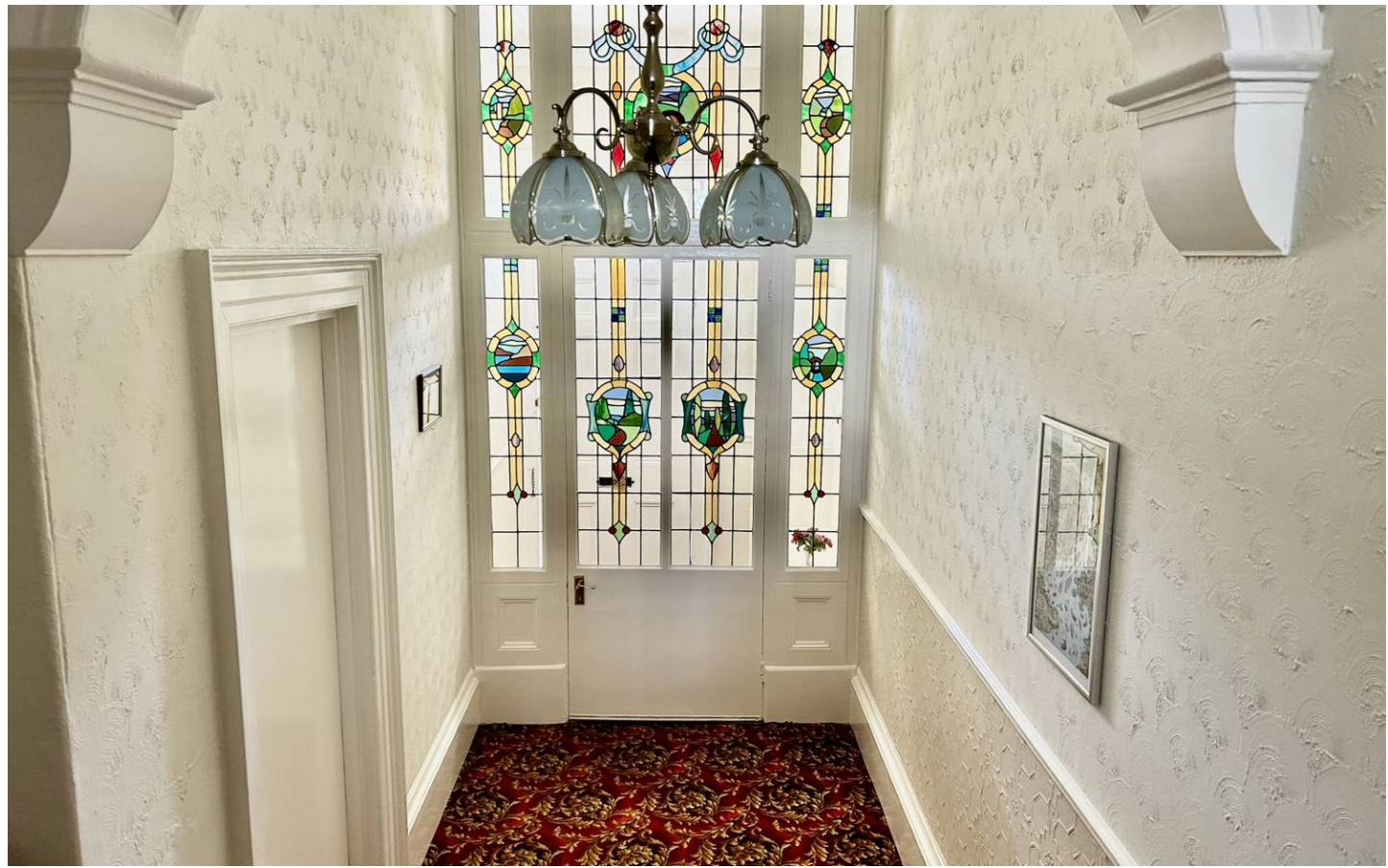
Tenure: Share of Freehold

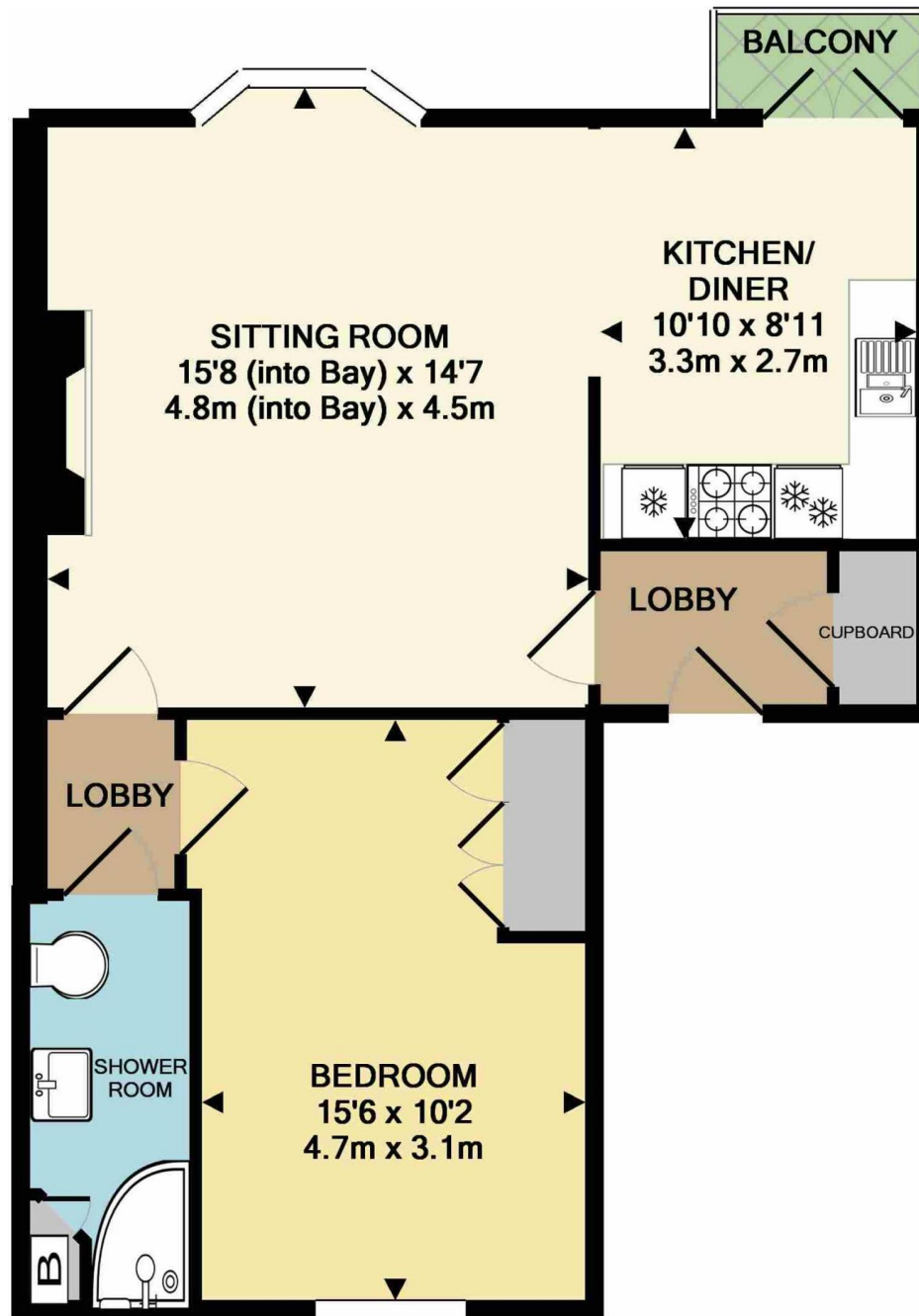
Lease Expiry: 01/06/2168

Service Charge: £0

Ground Rent: £0

Council Tax Band: B





Measurements are approximate. Not to scale. Illustrative purposes only
Made with Metropix ©2018



Atwell Martin

Atwell Martin, 65 Southside Street – PL1 2LA

01752 202121

plymouthsales@atwell-martin.co.uk

plymouth.atwellmartin.co.uk/

Atwell Martin Plymouth endeavour to ensure the accuracy of property details produced and displayed. Please note that we have not tested any apparatus, equipment, fixtures, fittings or services and so cannot verify that they are connected, in working order or fit for purpose. It is imperative that the buyer of any property makes such checks, prior to purchase so as to satisfy themselves of the properties suitability for their purchase. .