



The Shaw, Felton, Morpeth Offers Over £600,000

- Stunning Countryside Views
- Rare Opportunity
- Four Double Bedrooms
- Detached
- Includes Woodland
- Generous Living Space
- Integral Garage & Spacious Driveway
- Large Utility & Boot Room

Tenure: Freehold

EPC Energy Efficiency Rating: E

EPC Environmental Impact Rating: E



Northumberland
Properties

Northumberland Properties are excited to welcome to the market, The Shaw. This four-bedroom detached farmhouse set on 0.75 acres and is located a short drive from the picturesque village of Felton. The Shaw is an ideal family home or countryside retreat, combining space, comfort, and a picturesque setting.

The ground floor features two inviting reception rooms and a bright sunroom with breathtaking countryside views. Thoughtfully designed with a modern kitchen, a W/C, a utility room, and a practical boot room.

The first floor opens up onto a large landing and includes a family show room, four spacious double bedrooms, with the main bedroom boasting an ensuite.

Additional features include a single garage accessible from the house, a spacious driveway with ample parking.

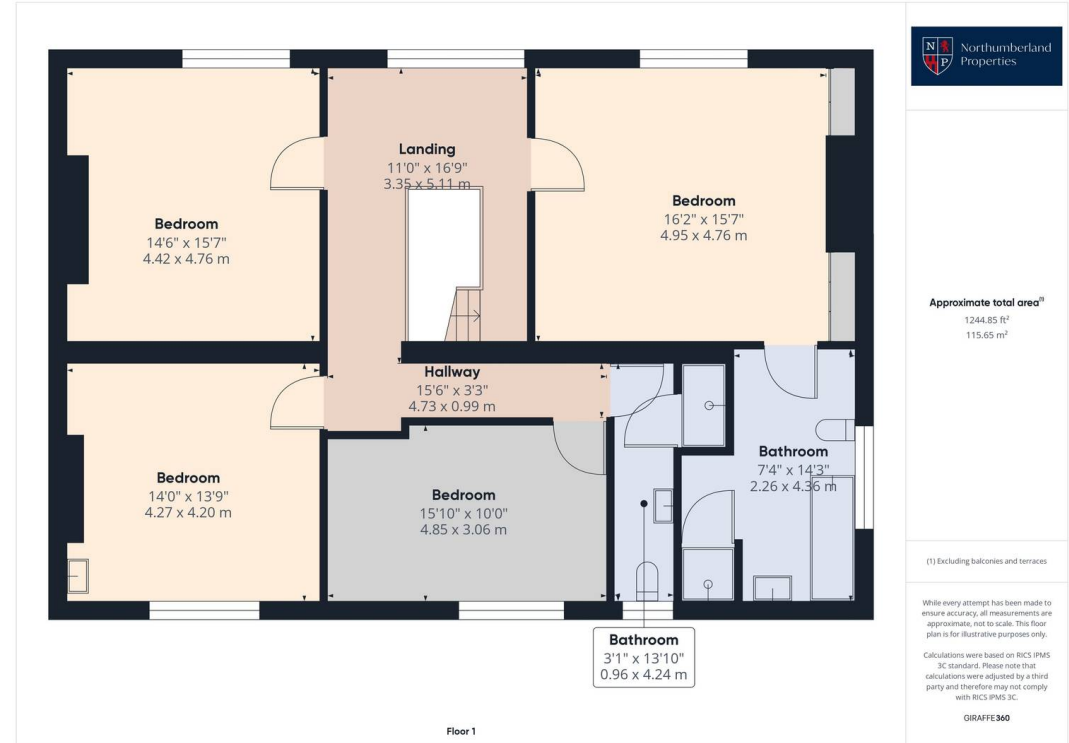
Situated on a large plot, the property benefits from gardens to the side and front, a patio area perfect for outdoor dining, and an area of woodland, offering plenty of private outdoor space.

Felton boasts an array of local amenities, including the renowned Northumberland Arms pub and the popular Running Fox Bakery.

With easy access to the A1, commuting to Newcastle or Scotland is convenient, and the market towns of Alwick, Morpeth, and Amble are within easy reach.





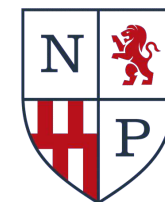




Northumberland Properties

12 Market Street, Alnwick - NE66 1TL

01665660910 • info@northumberlandproperties.co.uk • <http://northumberlandproperties.co.uk>



Northumberland
Properties