



CHISWELL & CO
RESIDENTIAL SALES & LETTINGS

113 PALMERSTON ROAD, BOURNEMOUTH, BH1 4HP
ASKING PRICE OF £315,000





0' 0" x 0' 0" INVESTMENT OPPORTUNITY BLOCK OF 2 TWO DOUBLE BEDROOMS FLATS WITH FREEHOLD - The first two double bedroom ground floor flat benefits from a modern kitchen, separate lounge, garden and own private entrance currently rented out at £850pcm. The second first floor flat also has its own entrance, separate kitchen and lounge, two double bedrooms and GFCH and is also rented for £850pcm. Before flats also have their own long leases in addition to the freehold. FOR MORE INFORMATION OR TO ARRANGE A VIEWING -

GFF LOUNGE

11' 1" x 9' 2" (3.4m x 2.8m)

GFF KITCHEN

6' 3" x 9' 2" (1.93m x 2.8m)

GFF BATHROOM

6' 5" x 4' 10" (1.96m x 1.49m)

GFF BEDROOM ONE

13' 9" x 8' 9" (4.2m x 2.68m)

BEDROOM TWO

10' 5" x 8' 6" (3.2m x 2.6m)

FFF LOUNGE

10' 9" x 9' 2" (3.3m x 2.8m)

FFF KITCHEN

6' 6" x 5' 5" (2m x 1.67m)

FFF BEDROOM ONE

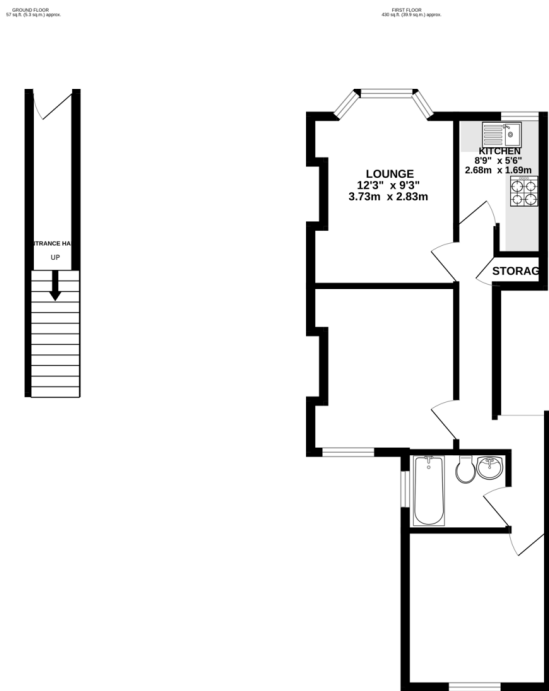
10' 9" x 9' 2" (3.3m x 2.8m)

FFF BATHROOM

6' 3" x 4' 10" (1.92m x 1.48m)

FFF BEDROOM TWO

9' 8" x 9' 10" (2.95m x 3m)



TOTAL FLOOR AREA- 486 sq.ft. (45.2 sq.m.) approx.

%epcGraph_c_1_304%