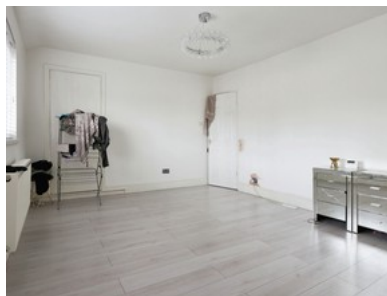


# Sledmere Grove

INVITING OFFERS BETWEEN £120,000 - £130,000



- Well Maintained Two-bedroom Mid Terrace
- Front Garden With Small Entrance Porch
- Lovely Living Room With Feature Chimney Breast
- Modern Kitchen With Space For Dining Table
- Rolling Back Garden With Patio Area
- Freehold
- Council Tax Band A
- Epc D



Bedroom 2 Bathroom 1 Reception 1

Guide Price

**£120,000**