



4 Ilsham Mews, Ilsham Road, Torquay – TQ1 2PB

£199,950





4 Ilsham Mews, Ilsham Road

Torquay

Beautifully renovated 2-bed cottage in sought-after Wellwood village with prime location near Ansteys Cove. Ideal for downsizers, holiday seekers, or investors. Stylish living space, modern kitchen, luxury shower, Nest heating. Main bedroom with storage. No chain. Viewing by appointment only.

Tenure: Leasehold

EPC Energy Efficiency Rating: D

- Superb location in Wellwood village
- Close to Ansteys Cove, Ilsham Valley and Meadfoot Beach
- Tastefully renovated throughout
- An ideal downsize, holiday home or holiday let
- Open plan living to the modern kitchen
- Stylish shower suite
- Nest gas central heating
- Two bedrooms
- Handy storage area accessed by the main bedroom
- No chain



4 Ilsham Mews Ilsham Road

Torquay

This sought after location is close to the beaches at Anstey's Cove, Ilsham Valley and Meadfoot Beach, both with waterfront cafes. Nearby is the friendly village style community of Wellswood with its church, Kents pub, post office, selection of quality restaurants and eateries, newsagents, pharmacies and many more fine independent retailers and boutiques. Including Ilsham C of E Academy and pre-school: award winning and only a short walk across the road.

Absolute Sales & Lettings

Absolute Sales & Lettings Ltd, 13 Ilsham Road - TQ1 2JG

01803 214214

torquay@movewithabsolute.co.uk

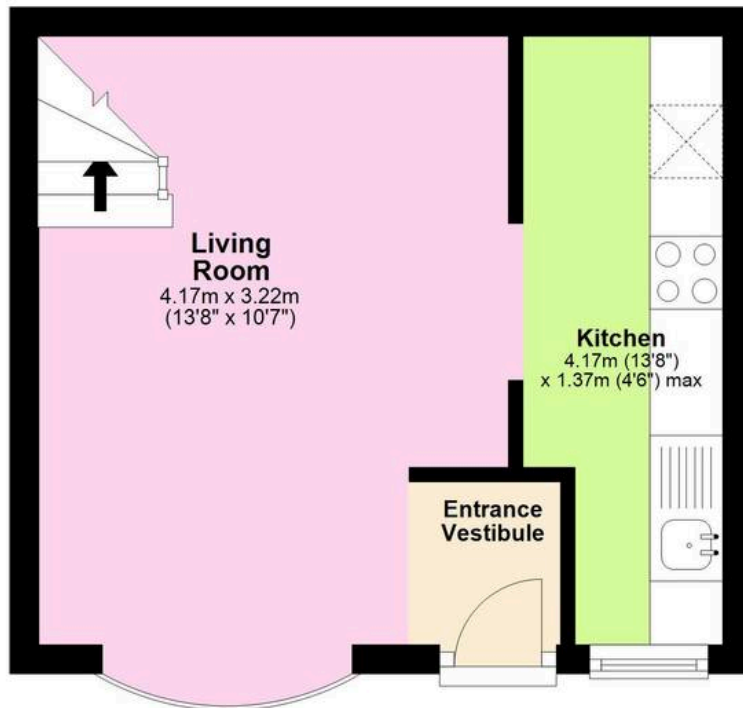
movewithabsolute.co.uk/





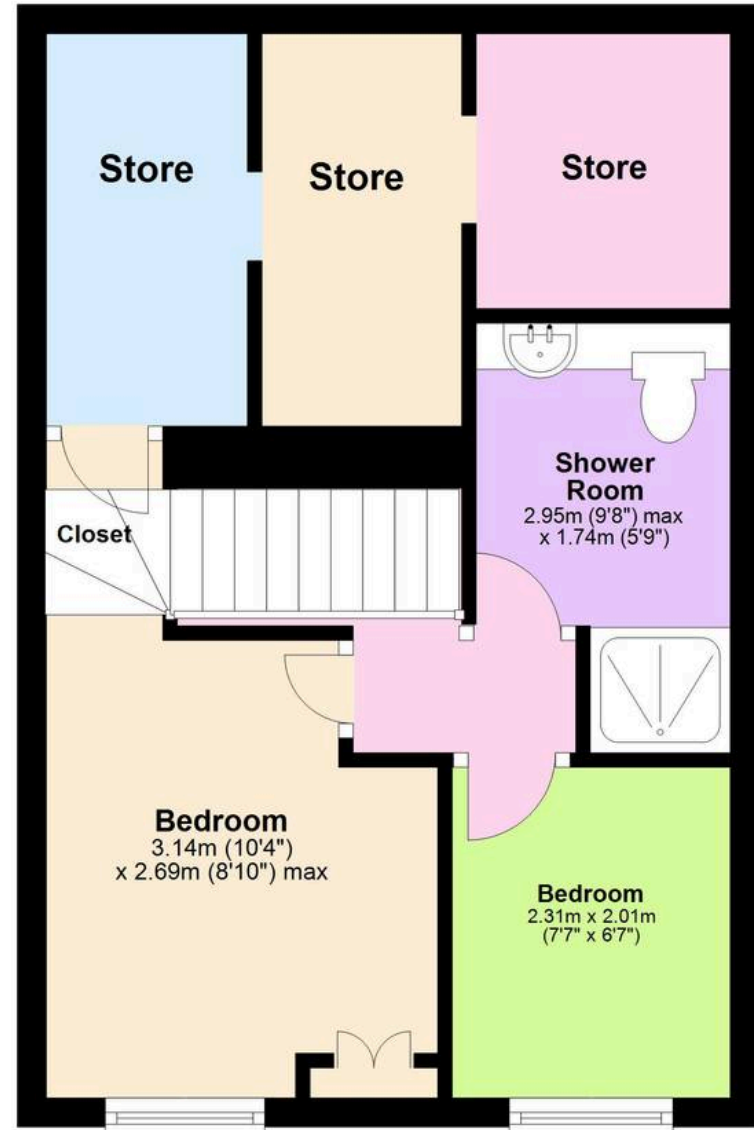
Ground Floor

Approx. 19.8 sq. metres (213.1 sq. feet)



First Floor

Approx. 27.1 sq. metres (291.7 sq. feet)



Total area: approx. 46.9 sq. metres (504.8 sq. feet)

Approx
Plan produced using PlanUp.