


HOME  TRUTHS

262 The Green, Ecclestone

Chorley

 £985 pcm



## 262 The Green

Eccleston, Chorley

Folly Cottage is a lovely two bedroom mid terrace period cottage in the sought after village of Eccleston close to all local amenities including shops and catchment area for outstanding schools. Available to let immediately.

To the front a path through the rose garden leads to the main entrance. Step into the porch and from there to the hallway. The good sized living room leads to the dining room and kitchen to the rear.

Externally, the rear cottage garden is lovely and private with raised beds and mature planting along with a shed. To the rear is vehicle access which can be used to park one vehicle.

Back inside to the first floor are two bedrooms and the bathroom comprising bath, wc, wash hand basin and airing cupboard.

The property is available now and requires a deposit of £1130, including a holding deposit of £225.

EPC Rating: C



# 262 The Green

Eccleston, Chorley

Folly Cottage is a lovely two bedroom mid terrace period cottage in the sought after village of Eccleston close to all local amenities including shops and catchment area for outstanding schools. Available to let immediately.

Council Tax band: B

Tenure: Freehold

EPC Energy Efficiency Rating: C

EPC Environmental Impact Rating:

- Mid terrace cottage
- Two bedrooms
- Gardens to front and rear
- Village location
- Parking for one car to rear
- Available now



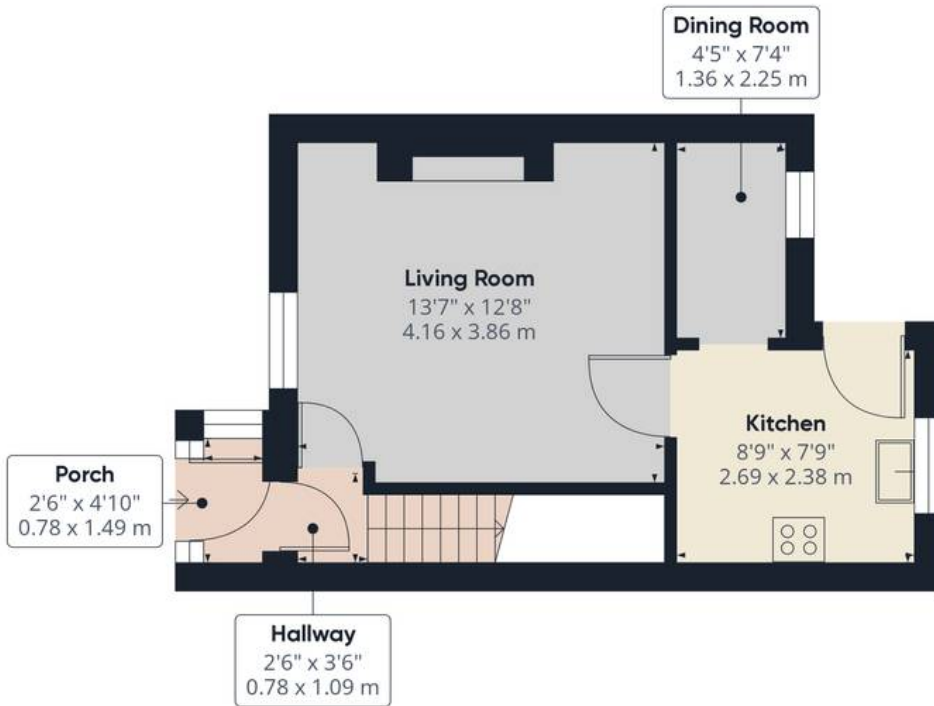
HOME  TRUTHS

Eccleston Branch  
265 The Green, Eccleston, PR7 5TF  
01257 451673

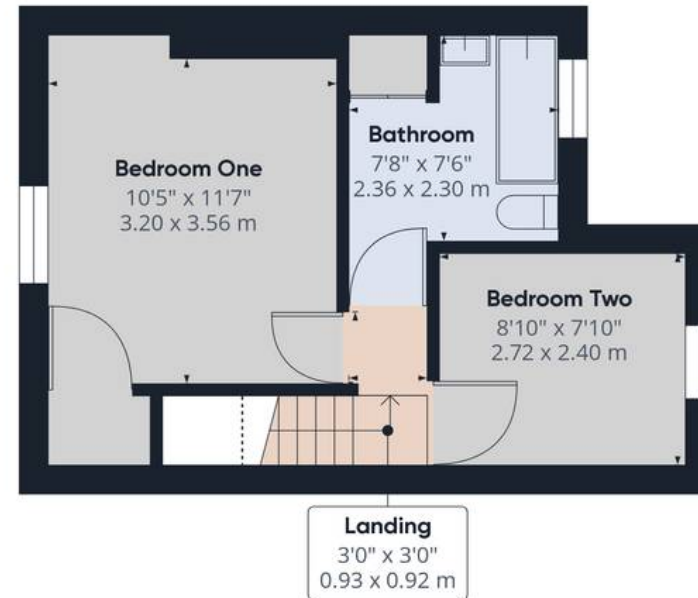
Coppull Branch  
244 Spendmore Lane, Coppull, PR7 5DE  
01257 794588

[www.hometruthslancs.co.uk](http://www.hometruthslancs.co.uk)  
[office@hometruthslancs.co.uk](mailto:office@hometruthslancs.co.uk)





Floor 1



Floor 2

**Approximate total area<sup>(1)</sup>**

607.19 ft<sup>2</sup>  
56.41 m<sup>2</sup>

**Reduced headroom**

7.64 ft<sup>2</sup>  
0.71 m<sup>2</sup>

(1) Excluding balconies and terraces

Reduced headroom

..... Below 5 ft/1.5 m

While every attempt has been made to ensure accuracy, all measurements are approximate, not to scale. This floor plan is for illustrative purposes only.

Calculations are based on RICS IPMS 3C standard.

**GIRAFFE360**