

# Crucible Homes



Millbank Close  
Sheffield, S35 4NS

Offers above  
£185,000



## Overview

NO CHAIN

Family home

Three bedrooms

Garage and off street parking

Excellent transport links

Desirable location



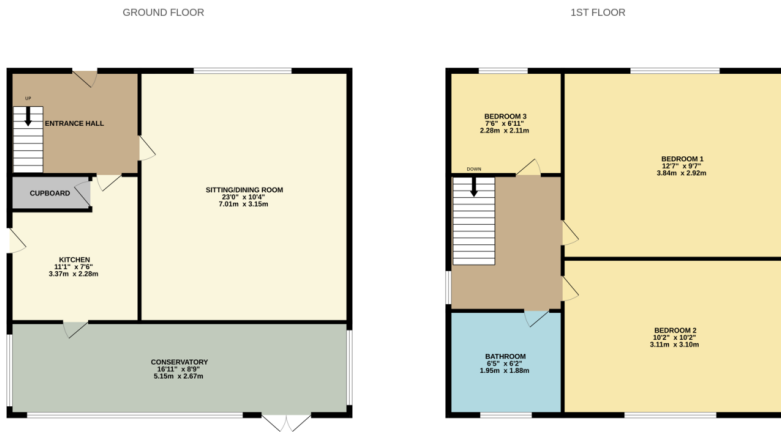
## Description

**SUMMARY** Approach the house through the front garden steps, leading the way to this fantastic family home. You'll appreciate the convenience of off road parking and garage to the rear.

Through the front door into the entrance hallway, into the large living room, designed for relaxation and gatherings, and with ample room for a dining table and chairs to the rear. There is a modern kitchen with handy storage pantry/cupboard, and large additional conservatory to the rear providing further living space. With twin uPVC patio doors opening out to the low-maintenance private rear garden.

The first floor boasts two generously sized double bedrooms, both offering a space and plenty of natural light. The third bedroom is a comfortable single, perfect for guests or a home office. There is also a modern family bathroom, comprising a three piece suite and full tiling to the walls.





Whilst every attempt has been made to ensure the accuracy of the floorplan contained herein, measurements of plans, windows, doors and any other items are approximate and no responsibility is taken for any error, omission or mis-statement. This plan is for illustrative purposes only and should be used as such by any prospective purchaser. The services, systems and appliances shown have not been tested and no guarantee as to their operability or efficiency can be given.  
Made with Hozonplan ©2024

High Green offers a serene suburban lifestyle while remaining well-connected to Sheffield's amenities. Local schools, shops, and parks are within walking distance, catering to your family's needs. Commuting is a breeze with excellent transport links. Contact the office today to arrange a viewing.

**PRS**  
Property Redress Scheme

