



phillip shaw  
estate agents

Flat 10, Earlswood Court, 3 Lacey Drive

Offers Over £425,000





## Flat 10

Earlswood Court, Edgware

Council Tax band: E

Tenure: Leasehold

EPC Energy Efficiency Rating: B

EPC Environmental Impact Rating: B

- Two bed, Two Bath Flat For Sale

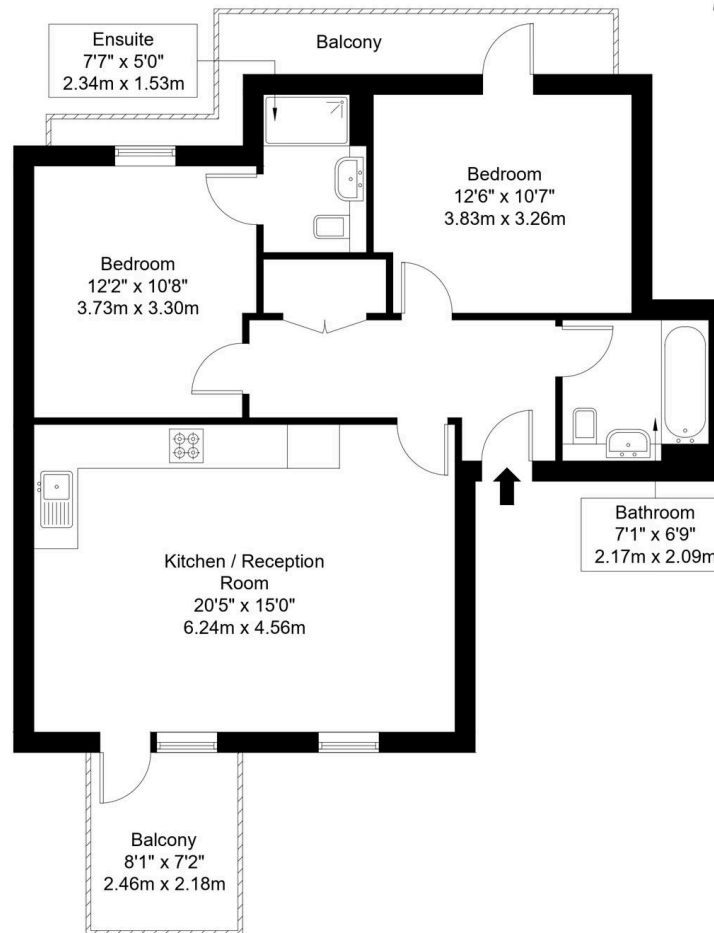
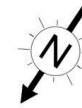


# Lacey Drive, HA8 8GA

Approx Gross Internal Area = 71.97 sq m / 775 sq ft

Balcony = 5.76 sq m / 62 sq ft

Total = 77.73 sq m / 837 sq ft



Third Floor

Ref :

Copyright **BLEU  
PLAN**

The Floor plan is not to scale and measurements and areas shown are approximate and therefore should be used for illustrative purposes only. The plan has been prepared in accordance with the RICS code of Measuring Practice and whilst we have confidence in the information produced it must not be relied on. Maximum lengths and widths are represented on the floor plan. If there is any aspect of particular importance, you should carry out or commission your own inspection of the property.

Copyright @ BLEUPLAN