



Larkrise Butts Ash Lane, Hythe
£575,000


ANTHONY JAMES
PROPERTIES



Larkrise Butts Ash Lane

Hythe, Southampton

Nestled in a desirable non-estate location, this executive 4-bedroom detached house offers a luxurious and energy-efficient living experience ideal for growing families. Boasting an air source heat pump central heating system, this home is as eco-friendly as it is elegant. Step inside to discover a meticulously designed interior, where every detail exudes comfort and style. The inviting lounge provides a cosy retreat, while the spacious kitchen/dining room is a culinary haven featuring a dual fuel rangemaster oven and integrated appliances, including a convenient drinks fridge. A versatile playroom doubles as an additional bedroom, catering to the evolving needs of your family, while the utility room offers ample space for laundry appliances and storage. Upstairs, the ensuite bathroom is a sanctuary of relaxation with Inari cream matt tiles, marble accent tiles, and a heated backlit mirror. For those seeking a home office or workout space, the fully insulated 14'x12' gym area with wood flooring is the perfect retreat, complemented by a separate 6'x12' shed equipped with electric sockets and lighting and exterior downlighting. Outside, the property offers driveway parking for multiple cars.

The rear garden benefits landscaped gardens, predominantly laid to lawn with curated border beds bursting with colourful shrubs and plants. An irrigation system takes care of the garden's hydration needs and extends to a charming water feature, creating a calming atmosphere for outdoor relaxation. At the foot of the garden, a purpose-built

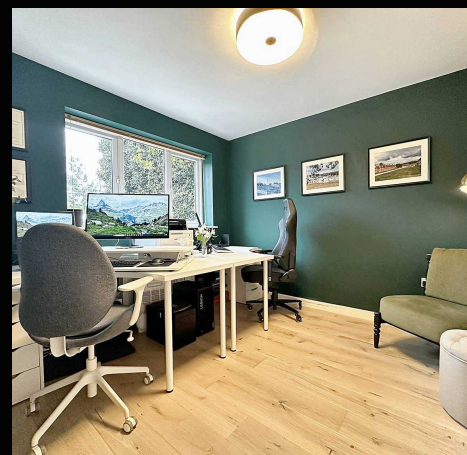


1 Southward House
Dibben Purlieu SO45 4PT

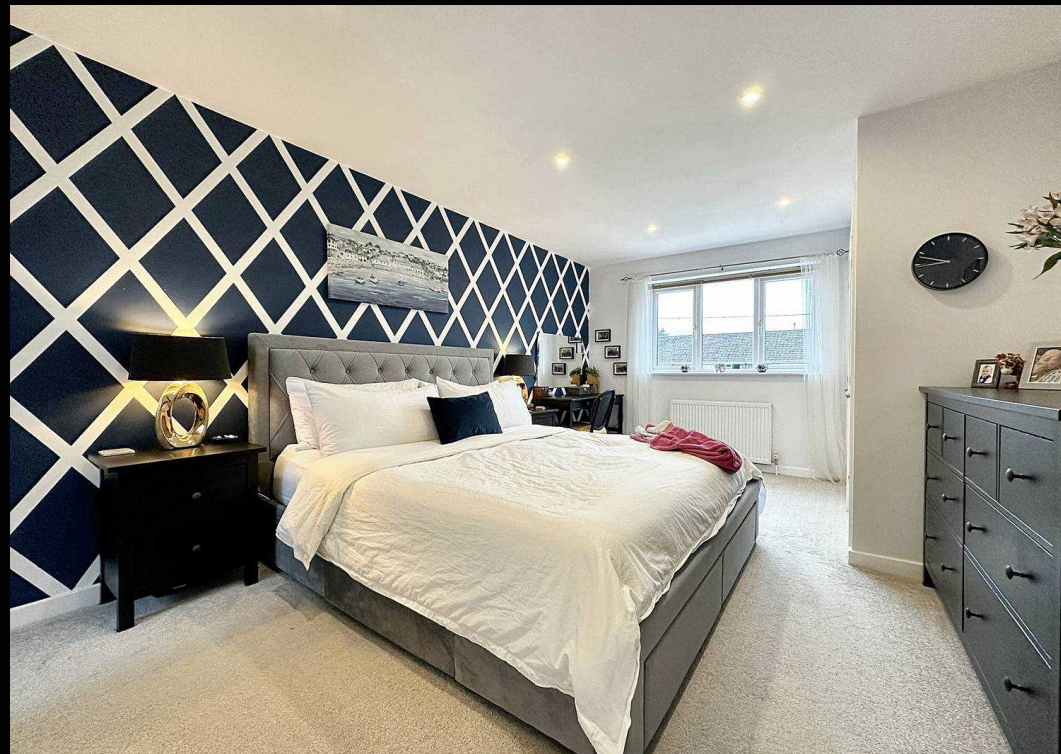


T: 02380 844405

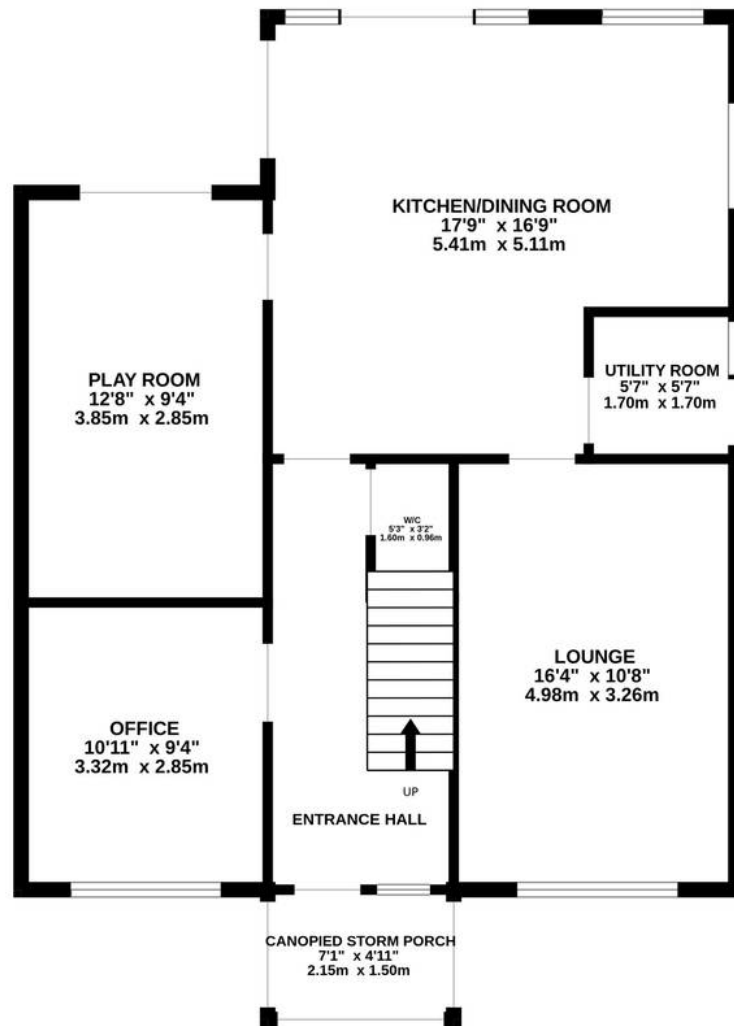
info@anthonyjamesproperties.co.uk



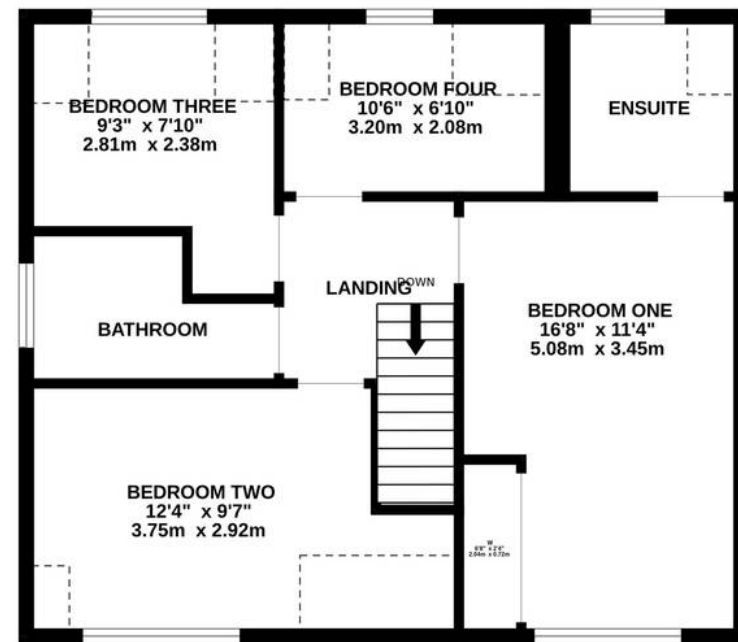
Maintaining the property is a breeze with side



GROUND FLOOR
870 sq.ft. (80.8 sq.m.) approx.



1ST FLOOR
637 sq.ft. (59.1 sq.m.) approx.



TOTAL FLOOR AREA : 1506 sq.ft. (139.9 sq.m.) approx.

Whilst every attempt has been made to ensure the accuracy of the floorplan contained here, measurements of doors, windows, rooms and any other items are approximate and no responsibility is taken for any error, omission or mis-statement. This plan is for illustrative purposes only and should be used as such by any prospective purchaser. The services, systems and appliances shown have not been tested and no guarantee as to their operability or efficiency can be given.