

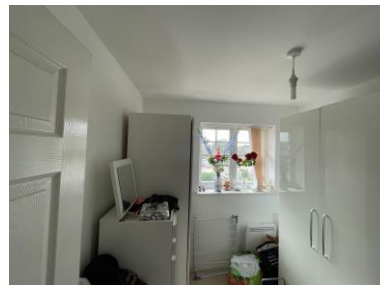


Flat 47 - 6 Actonville Avenue, Manchester, M22

Asking Price

£140,000

This top floor two-bedroom apartment, offered for sale by Bergins Estate Agents, is within a sought-after private estate. Conveniently located, it provides easy access to the Metrolink Tram Stop, ensuring seamless connectivity. The spacious living room, adorned with a Juliette balcony, provides a serene view of the area and transitions smoothly into a well-equipped kitchen. Both bedrooms are generously. The family bathroom, with its tiled finish and over-bath shower, caters to the needs of a modern family. Additional amenities include an allocated parking space adding to the comfort and convenience. The property's strategic location near Manchester Airport, Wythenshawe Hospital, local schools, and a shopping centre, makes it an ideal choice for professionals and families alike, seeking a blend of tranquility and urban convenience.



Lounge

12' 2" x 13' 0" (3.7m x 3.95m)

Kitchen

5' 1" x 12' 7" (1.55m x 3.84m)

Family Bathroom

8' 6" x 5' 2" (2.6m x 1.57m)

Bedroom One

9' 7" x 10' 2" (2.92m x 3.1m)

Bedroom Two

8' 5" x 11' 6" (2.57m x 3.5m)



Disclaimer - Disclaimer: These particulars, whilst believed to be accurate are set out as a general guideline only or guidance and do not constitute any part of an offer or contract. Intending purchasers should not rely on them as statements of representation or fact, but must satisfy themselves by inspection or otherwise as to their accuracy. Please note that we have not tested any apparatus, equipment, fixtures, fittings or services, including gas central heating and so cannot verify they are in working order or fit for their purpose. Furthermore solicitors should confirm movable items described in the sales particulars are, in fact included in the sale since circumstances do change during marketing or negotiations. Although we try to ensure accuracy, measurements used in this brochure may be approximate. Therefore if intending purchasers need accurate measurements to order carpeting or to ensure existing furniture will fit, they should take such measurements themselves