



Flat 18, Dolphin Court Kingsmead Road, High Wycombe

£220,000



Flat 18

Dolphin Court Kingsmead Road, High Wycombe

A much improved ground floor apartment in this highly sought after development with its own Swimming pool/Gym complex. Entrance hall, Sitting/Dining room, Kitchen, Bedroom, Bathroom, Electric heating, Double glazing, Attractive communal gardens. Viewing recommended.

Council Tax band: C

Tenure: Leasehold





Entrance hall

Storage heater, security entryphone, airing cupboard housing foam clad hot water cylinder and cold water tank

Sitting room

Storage heater, window to front

Kitchen

Fitted with a range of eye and base level units incorporating sink unit with mixer tap and drainer, built in oven, fitted four ring hob with extractor over, space for fridge/ freezer, space and plumbing for washing machine, space and plumbing for dishwasher, part tiled walls, window to front

Bedroom

With a range of fitted wardrobes, electric heater, window to front

Bathroom

White suite comprising panelled bath with mixer tap and shower attachment, low level W.C., wash hand basin mixer tap and cupboards under, fitted mirrored cupboard, tiled walls, electric heater

Allocated parking

There is an allocated parking space plus visitor parking spaces

Communal gardens

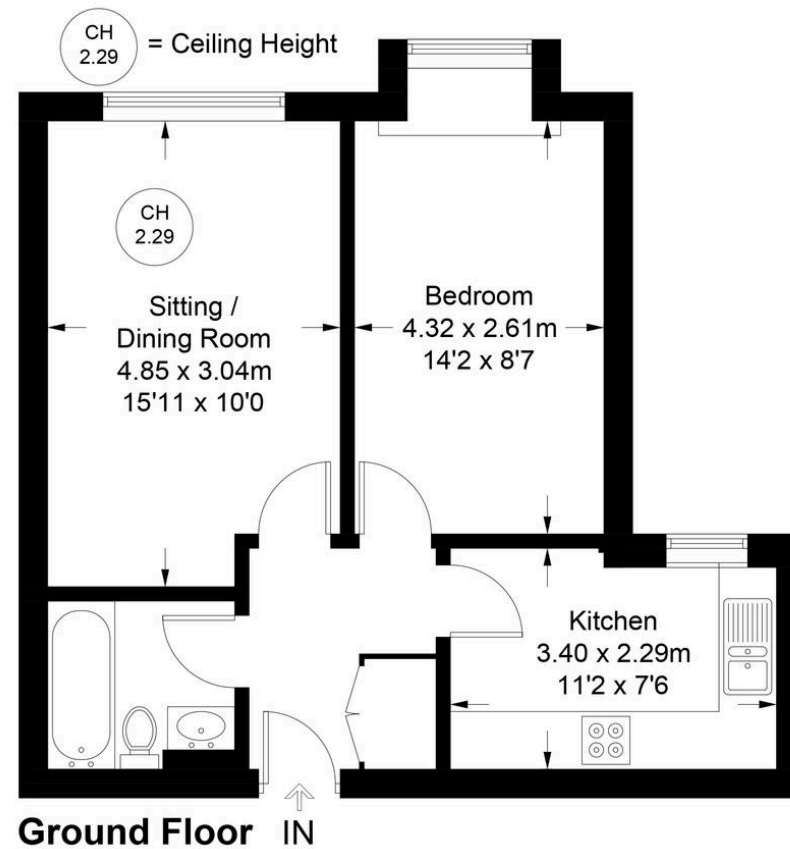
The gardens are particularly well maintained based around a central water feature.

Communal gym/swimming pool complex

The property benefits from a heated indoor residents swimming pool and gym



Approximate Gross Internal Area = 43.9 sq m / 472 sq ft



Floor Plan produced for Robertsons by Media Arcade ©.
Illustration for identification purposes only. Window and door openings are approximate. Whilst every attempt is made to assure accuracy in the preparation of this plan, please check all dimensions, shapes and compass bearings before making any decisions reliant upon them.

Robertsons Estate Agents

Swains House, Swains Lane, Flackwell Heath - HP10 9BN

01628 533373

flackwellheath@robertsonsestateagents.co.uk

www.robertsonsestateagents.co.uk/

