



Shakespeare Way, Taverham - NR8 6TZ



Shakespeare Way

Taverham, Norwich

NO CHAIN. This well-established DETACHED FAMILY HOME is pleasantly situated with a TREE LINED REAR ASPECT on the outskirts of Norwich. Considerably EXTENDED over time to create a VERSATILE living accommodation, some 1642 Sq. ft in total can be found within (stms). The ground floor offers a WC, separate sitting room, OPEN PLAN kitchen with INTEGRATED APPLIANCES and a dining room with BREAKFAST BAR, leading into a generous CONSERVATORY and HOME OFFICE - with potential to use this space for an annexe (stp). The first floor has FOUR BEDROOMS, three leading off the landing and having built in wardrobes whilst having use of the family bathroom. The extended main bedroom room has use of the EN-SUITE SHOWER ROOM. Externally, ample OFF ROAD PARKING and a brick GARAGE serve the home, with a PRIVATE and ENCLOSED rear garden lined to the rear by mature trees.

Council Tax band: D

Tenure: Freehold

EPC Energy Efficiency Rating: D

- No Chain!
- Considerably Extended & Adapted
- Fantastic Decorative Order
- 22' Open Plan Kitchen/Dining Room
- Family Bathroom & En-Suite
- Off Road Parking & Garage
- Annexe Potential (stp)



The well served village of Taverham offers excellent facilities including schooling from first to high school, excellent local facilities including local shops, doctors, vets and a library and excellent transport links via car and bus, with the A47 and Broadland Northway (NDR) within easy reach. Marriotts Way is only a few minutes walk away, and Taverham Mill Nature Reserve owned by Anglian Water is close by.

SETTING THE SCENE

The property is nestled back from the street with a lawned frontage featuring mature shrubbery and trees to the front. A tarmac driveway leads towards the garage with electric vehicle charging capabilities and access to the front door.

THE GRAND TOUR

Stepping inside, the first thing you will notice is the light and airy accommodation ahead of you with Karndean wood effect flooring running underfoot, stairs to the first floor and a sizeable storage cupboard immediately to your right. Before heading into the rest of the accommodation you can access the ground floor WC to your right which offers fully tiled walls and karndean wood effect flooring with vanity storage and wall mounted heated towel rail. Next to the left is the separate sitting room, a carpeted space with large uPVC double glazed window to the front. This bright room features an electric feature fireplace and could be opened up into the dining room if an open plan feel is what is preferred. The kitchen and dining room are found as one to the rear of the property with continued Karndean wood effect flooring running underfoot. The kitchen space greets you first with a range of wall and base mounted storage set around wood effect work surfaces with tiled splash backs.





Shakespeare Way

Taverham, Norwich

The kitchen offers an integrated dishwasher and tall integrated fridge freezer with space for a range style oven with extractor fan over. To your left the dining space has room for a formal dining table with a kitchen island separating the two areas creating a breakfast bar ideal for family living. Within the dining space, additional storage can be found within the matching wall and base level units. Two sets of French doors lead from both the kitchen and dining areas into the conservatory beyond. The conservatory offers tile effect flooring and creates the ideal second seating area with views into the rear garden for a more relaxing and personal feel with a leafy outlook beyond the garden. To your right, the wall mounted central heating boiler can be found with access into the garage and a door leading to the versatile space that has been created at the very rear of the property currently used as a home office, but could be utilised as a playroom/family room, home gym or a potential ground floor bedroom if wished with the addition of a personal access door leading directly into the garage. The hall, stairs and first floor landing were newly carpeted in 2023 and grant access into all living accommodation on the first floor as well as the handy built in airing/storage cupboard and three piece family bathroom which is fully tiled with vaulted ceiling, radiator and frosted glass window. The largest of the bedrooms is a very generous double sized room benefiting from the extension to the side of the property. This room features built in storage and wardrobes and has direct use of the en-suite shower room with vanity sink and separate storage cupboard, radiator and a fully tiled surround and flooring. The second and third bedrooms are found to the left of the property off the landing, both generous double bedrooms with carpeted flooring and offering built in wardrobes. The smaller has a front facing aspect, while the larger occupies a rear facing aspect overlooking the garden with a tree lined view behind. This room also benefits from a built in wardrobe, while the smaller of the four bedrooms sits opposite the stairs. This single bedroom would also make an ideal nursery or study and offers carpeted flooring and views into the rear garden.

FIND US

Postcode : NT8 6TZ

What3Words : ///shred.sweetener.glare

VIRTUAL TOUR

View our virtual tour for a full 360 degree of the interior of the property.

**STARKINGS
& WATSON**

HYBRID ESTATE AGENTS



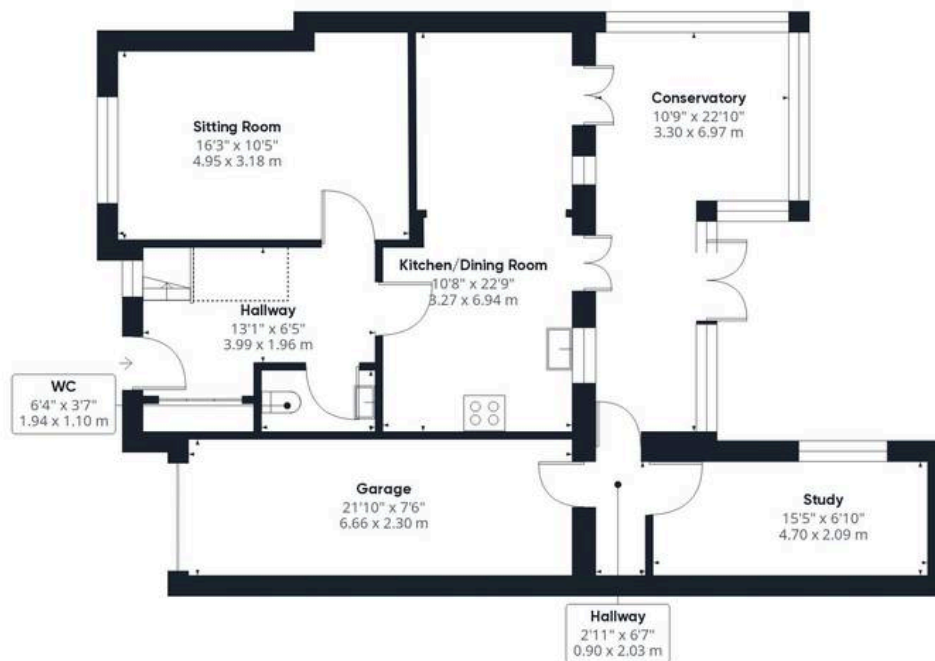


THE GREAT OUTDOORS

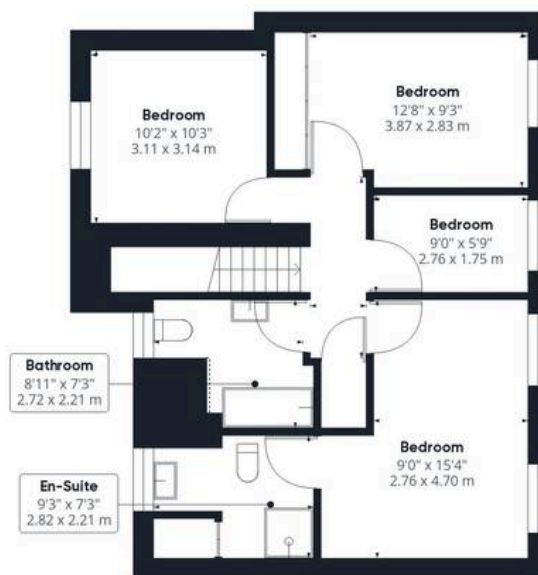
The garden is fully enclosed on all sides by timber fencing and initially offers a paved patio area ideal for entertaining and alfresco dining. The rest of the garden is predominantly laid to lawn with colourful flowering planting borders surrounding the lawn leading to a shingle border on the right where a large, newly installed shed can be found providing useful storage, with a further feature patio area tucked in the opposite corner providing the perfect spot to enjoy the gardens and peaceful surroundings on offer. The woodland to the rear boundary creates a leafy outlook and adds to the privacy on offer, whilst at the side there is a paved and gated access leading to the front of the property.

A hand holding a smartphone displaying the Starkings & Watson virtual tour app interface. The screen shows a house icon, a globe icon, and the text "Enter virtual tour" and "STARKINGS & WATSON". The browser address bar shows "starkingsandwatson.co.uk".
A QR code is located in the bottom left corner of the advertisement, intended for scanning to access the virtual tour.

SCAN
HERE FOR A
VIRTUAL
TOUR



Ground Floor



Floor 1

Approximate total area⁽¹⁾

1642.57 ft²

152.6 m²

Reduced headroom

15.61 ft²

1.45 m²

(1) Excluding balconies and terraces

Reduced headroom

..... Below 5 ft/1.5 m

While every attempt has been made to ensure accuracy, all measurements are approximate, not to scale. This floor plan is for illustrative purposes only.

Calculations are based on RICS IPMS 3C standard.

GIRAFFE 360



Starkings & Watson Hybrid Estate Agents

196 Norwich Road, Costessey - NR5 0EX

01603 336446 • costessey@starkingsandwatson.co.uk • starkingsandwatson.co.uk/

Disclaimer: Whilst every care has been taken to prepare these sales particulars, they are for guidance purposes only. All measurements are approximate and for general guidance purposes only and whilst every care has been taken to ensure their accuracy, they should not be relied upon and potential buyers are advised to recheck the measurements.