

Key Features

- Built-in energy efficiency with luxurious underfloor heating.
- Fibre optic cable to this home to enable super fast broadband.
- Integrated kitchen appliances included: Black, glass fronted double oven, gas hob on a glass base and extractor hood.
- Landing with glass balustrades, light oak stained wooden handrail and newel.
- Beautiful Porcelanosa ceramic tiling to kitchen, bathroom and en-suite.
- Space saving built-in wardrobes with oak effect sliding mirror doors to all bedrooms.
- Contemporary wall hung vanity units and chrome heated towel rail in bathroom and en-suite.
- Elongated, low level shower tray with a thermostatic pressurised shower and sliding glass door in the en-suite.
- Vinyl flooring to kitchen/dining area, bathroom, en-suite and cloakroom.

For full details of our specification, please refer to our website:

<https://www.norfolkhomes.co.uk/homes-and-locations/church-mead-brundall/specification>



The Penrose

CHURCH MEAD
BRUNDALL



Church Mead, Brundall

Berryfields, off Yarmouth Road,
Brundall, Norfolk NR13 5QE.
Telephone: 01603 964011
Email: churchmead@norfolkhomes.co.uk
www.norfolkhomes.co.uk

IMPORTANT:

These sales particulars are intended to give customers a good overview of our homes details. As we update and improve our designs continuously, it may mean that some amendments have been made since the brochure was published. PLEASE ASK OUR SALES OFFICE MANAGER FOR A COPY OF THE VERY LATEST PLAN(S) OR VISIT OUR WEBSITE www.norfolkhomes.co.uk

Norfolk Homes



The Penrose



Plots 5, 6, 21, 23 & 27

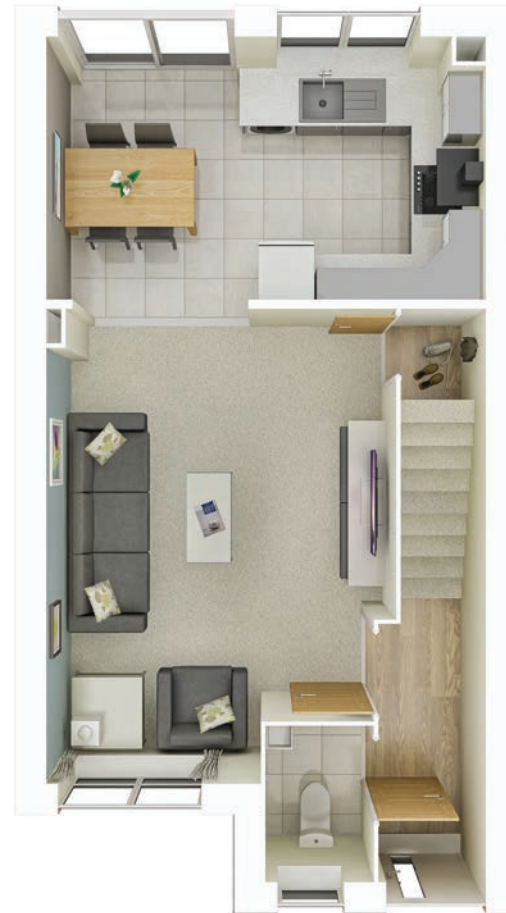
2 bedroom semi-detached (plot 21),
end terrace (plots 5 and 27),
mid terrace (plots 6 and 23) house
and 2 parking spaces.

769 sq.ft (71.4 sq.m.)

Car Parking

All plots 2 parking spaces

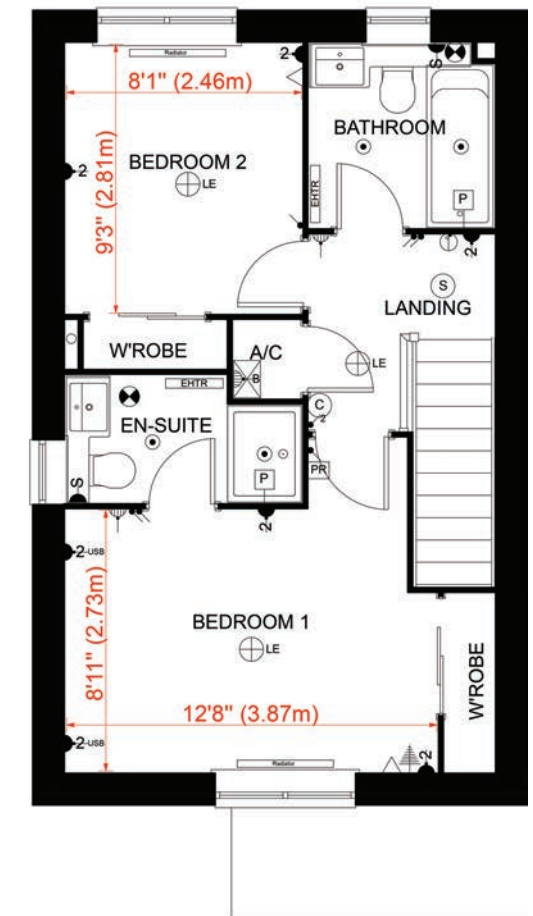
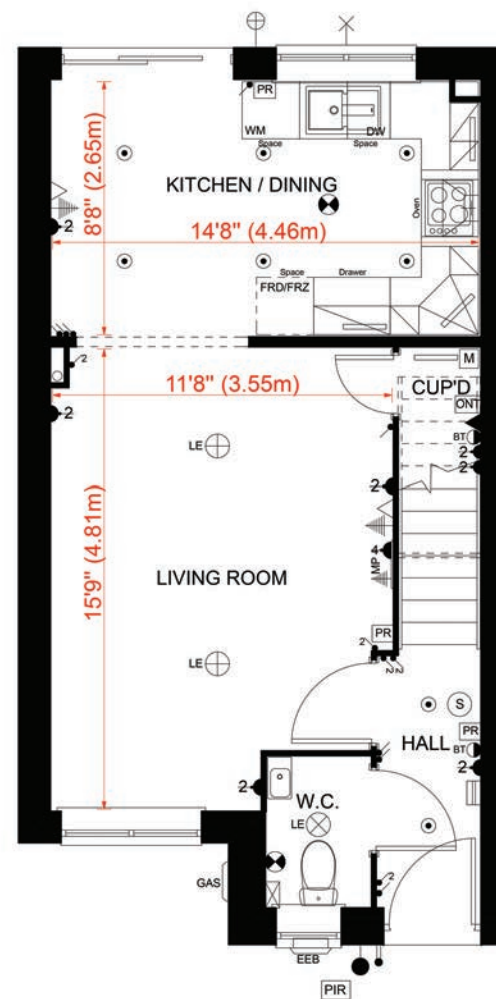
Church Mead, Brundall



First Floor



Ground Floor



Floor Plans Approximate dimensions (+/- 50 mm).