



## 3 Anchor Quay, Norwich

Guide Price £650,000

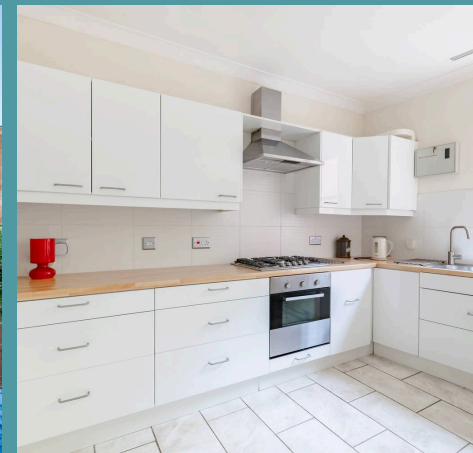
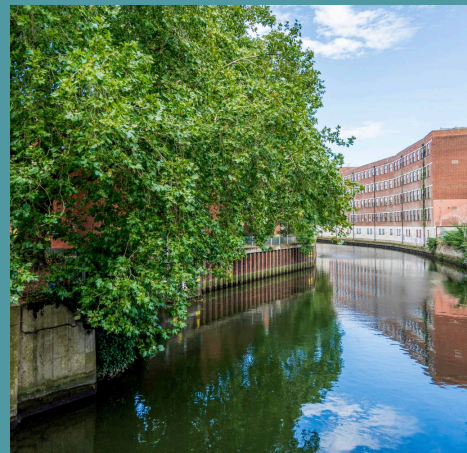
# 3 Anchor Quay

Norwich, Norwich

\*Guide Price £650,000 - £700,000\* Terrace home spanning across 6 split floors, offering panoramic views of the River Wensum. This converted Victorian brewery blends historic charm with contemporary living. The spacious layout features a modern kitchen/diner, a bright sitting room and five bedrooms, including an ensuite. A mezzanine level provides a versatile workspace, while the private courtyard and communal areas offer an outdoor setting. With allocated parking and a prime city centre location, this property is perfect for those seeking urban living with a touch of history.

Council Tax band: E

Tenure: Freehold





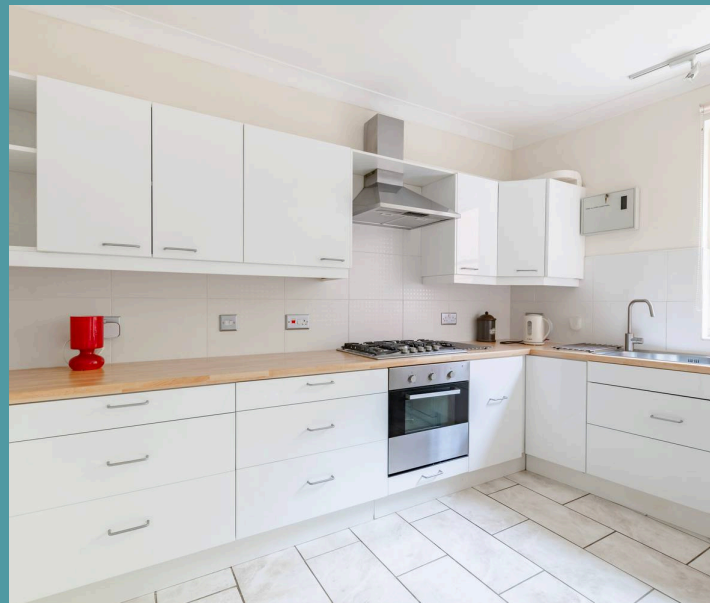
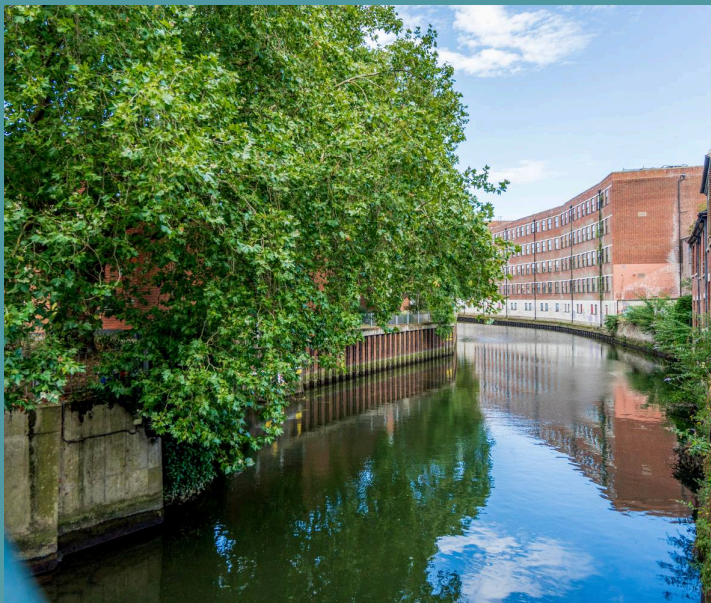
### 3 Anchor Quay

Norwich, Norwich

\*Guide Price £650,000 - £700,000\* Terrace home spanning across 6 split floors, offering panoramic views of the River Wensum. This converted Victorian brewery blends historic charm with contemporary living. The spacious layout features a modern kitchen/diner, a bright sitting room and five bedrooms, including an ensuite. A mezzanine level provides a versatile workspace, while the private courtyard and communal areas offer an outdoor setting. With allocated parking and a prime city centre location, this property is perfect for those seeking urban living with a touch of history.

#### THE LOCATION

Nestled in a quiet and peaceful setting along the River Wensum, just a two-minute stroll from the vibrant St. Benedict's Street with its array of restaurants, cafes and the bustling Norwich Market, this property offers convenience in the heart of East Anglia. Known for its stunning medieval architecture, vibrant cultural scene, and exclusive shopping districts, Norwich offers an unparalleled living experience. The city's charming cobblestone streets are lined with upscale boutiques, fine dining establishments, and picturesque riverside views. With excellent schools, renowned universities, and a thriving business community, Norwich provides both a tranquil retreat and a dynamic urban lifestyle. This luxurious property is perfectly situated to enjoy all that this distinguished city has to offer.



#### ANCHOR QUAY

