

Gloucester Road

Salford



£260,000



# Gloucester Road

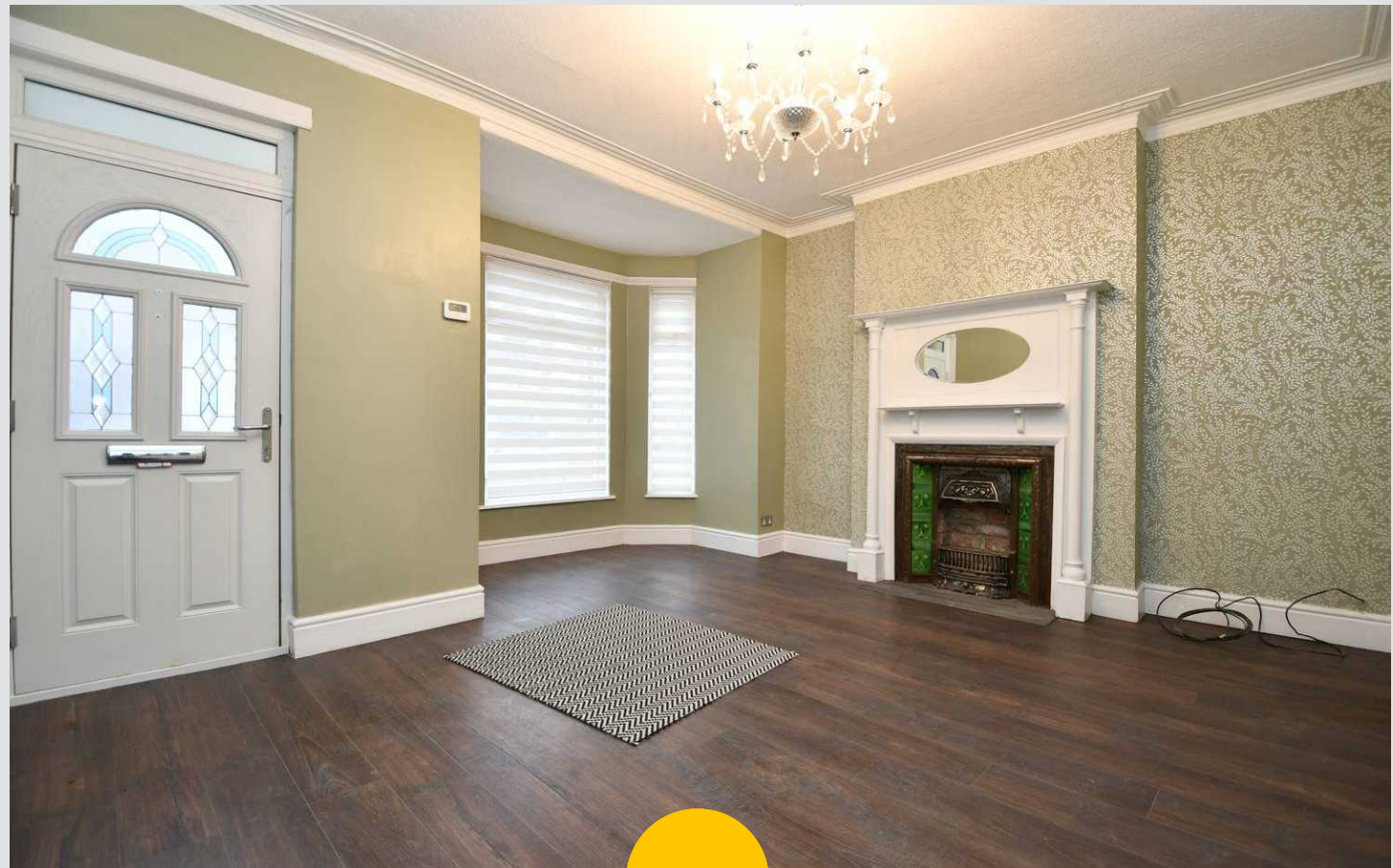
Salford

WOW! Take a look at this tastefully renovated, three bedroom, semi-detached family home! Boasting an abundance of space, this period property has been thoughtfully reimagined into the high standard it is today

Council Tax band: B

Tenure: Leasehold

- Tastefully Renovated, Three Bedroom Semi-Detached Period Property
- Within Walking Distance of Salford Royal Hospital
- Bay-Fronted Lounge and a Spacious Dining Room
- Large Fitted Kitchen with Plenty of Storage, and a Utility Space to the Rear
- Huge Main Bedroom with Two Windows Bringing Plenty of Light in
- Stylish Three-Piece Bathroom, Complete with a Rolltop Bath
- Low-Maintenance Gardens to the Front and Rear
- Within Easy Access of Light Oaks Primary School and Several Well-Kept Parks
- Close to Excellent Transport Links into Salford Quays, Media City and Manchester City Centre
- Viewing is Highly Recommended





### Entrance Hallway

A welcoming entrance hallway featuring ceiling light point.

### Lounge

14' 10" x 11' 10" (4.52m x 3.61m)

Featuring ceiling light point, three double glazed windows, wall - mounted radiator. Fitted with laminate flooring.

### Dining room

14' 11" x 13' 5" (4.54m x 4.10m)

Featuring ceiling light point, double glazed window, wall - mounted radiator. Fitted with laminate flooring.

### Kitchen

18' 10" x 9' 1" (5.74m x 2.77m)

Featuring a range of complimentary wall and base units with integral hob and oven. Utility space at the end. Complete with ceiling light point, spotlights, two double glazed windows and wall - mounted radiator.

### Landing

Complete with a ceiling light point and carpet flooring.

### Bedroom One

14' 10" x 11' 10" (4.51m x 3.60m)

Featuring ceiling light point, two double glazed window, wall - mounted radiator. Fitted with laminate flooring.

### Bedroom Two

11' 9" x 9' 7" (3.58m x 2.92m)

Featuring ceiling light point, double glazed window, wall - mounted radiator. Fitted with laminate flooring.

### Bedroom Three

9' 0" x 5' 6" (2.74m x 1.67m)

Featuring ceiling light point, double glazed window, wall - mounted radiator. Fitted with laminate flooring.



HILLS



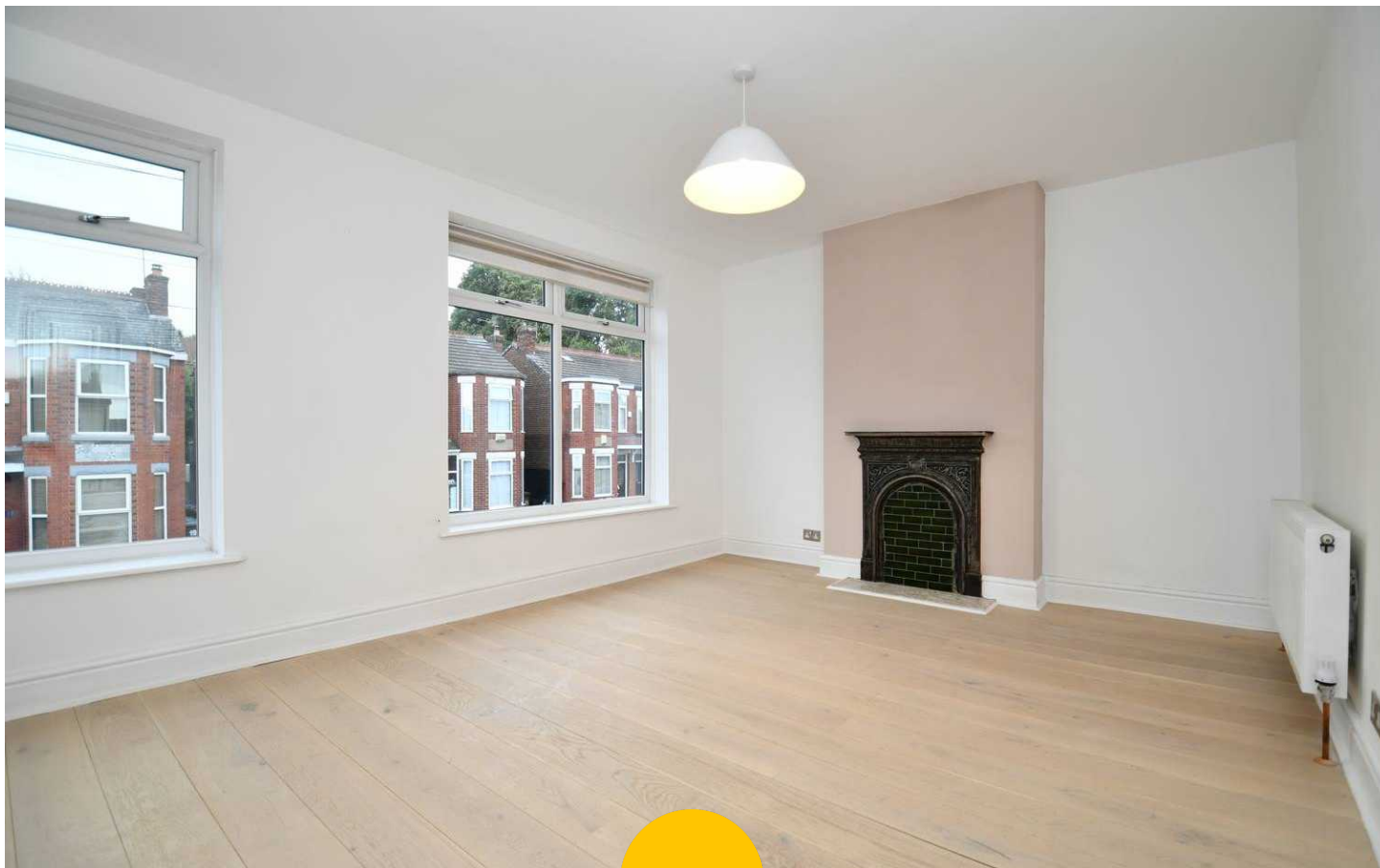
**Bathroom**

6' 7" x 5' 6" (2.00m x 1.67m)

Featuring a three-piece suite including a freestanding bathtub, hand wash basin and W.C. Complete with a ceiling light point, double glazed window, wall - mounted radiator. Fitted with tiled walls and flooring.

**External**

Low - maintenance courtyards garden to the front and rear of the property.



HILLS

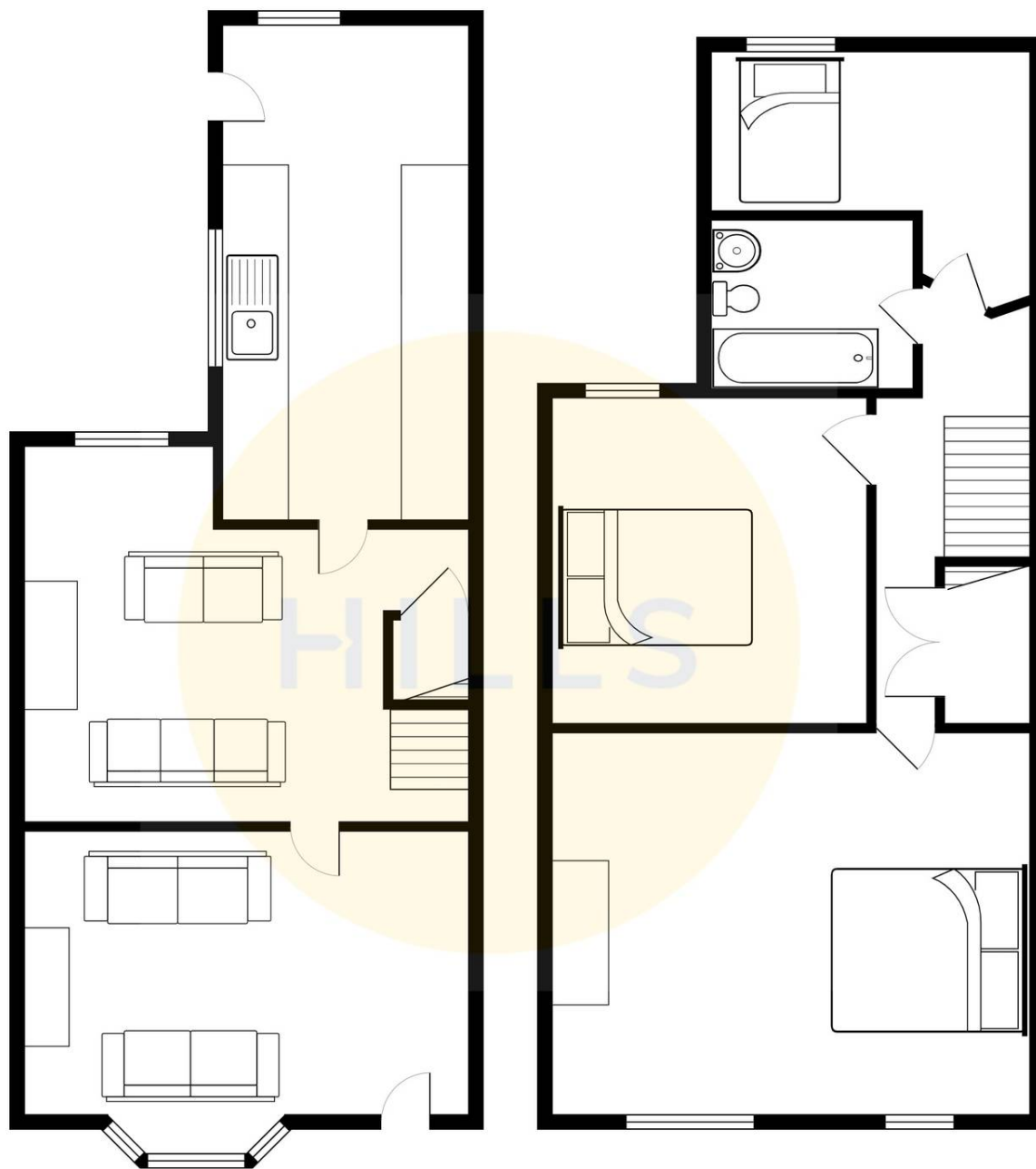






HILLS









## Hills | Salfords Estate Agent

Hills Residential, Sentinel House Albert Street - M30 0SS

0161 707 4900

[sales@hills.agency](mailto:sales@hills.agency)

[www.hills.agency/](http://www.hills.agency/)



THE PROPERTY MISDESCRIPTIONS ACT 1991 The Agent has not tested any apparatus, equipment, fixtures and fittings or services and so cannot verify that they are in working order or fit for the purpose. A Buyer is advised to obtain verification from their Solicitor or Surveyor. References to the Tenure of a Property are based on information supplied by the Seller. The Agent has not had sight of the title documents. A Buyer is advised to obtain verification from their Solicitor. You are advised to check the availability of this property before travelling any distance to view. Every effort and precaution has been made to ensure these particulars are correct and not misleading but their accuracy is not guaranteed nor do they form part of any contract. If there is any point which is of particular importance to you, please contact us and we will provide any information you require. This is advisable, particularly if you intend to travel some distance to view the property. The mention of any appliances and services within these details does not imply that they are in full and efficient working order. These particulars are in draft form awaiting Vendors confirmation of their accuracy. These details must therefore be taken as a guide only.