



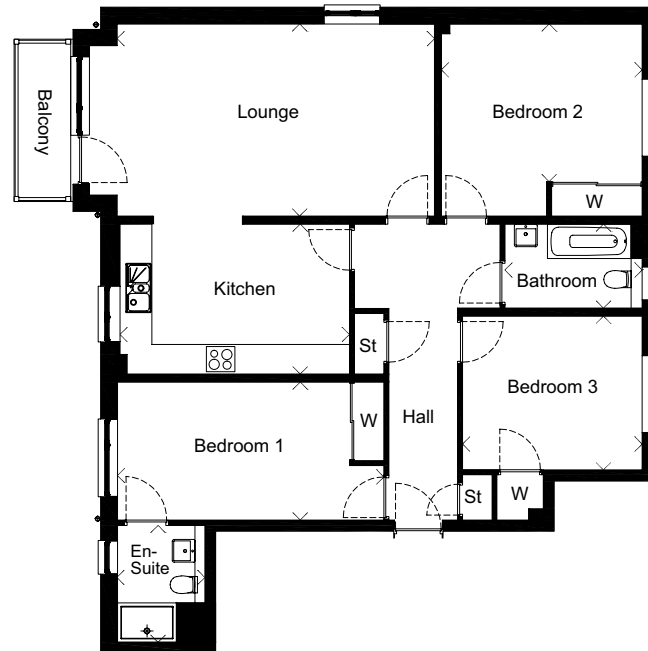
The Fife ■

3-Bedroom Apartment with Balcony

STEWART GARDENS APARTMENTS, NEWTON MEARNs

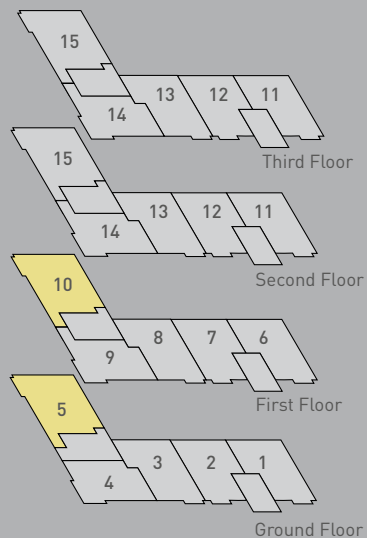
PLOTS:

5, 10



	Metric	Imperial
Lounge	6460 x 3905	21'2" x 12'9"
Kitchen	4665 x 3050	15'3" x 10'0"
Bedroom 1	5415 x 2805	17'9" x 9'2"
En-Suite	1775 x 2370	5'9" x 7'9"
Bedroom 2	4080 x 3205	13'4" x 10'6"
Bedroom 3	3650 x 3125	11'11" x 10'3"
Bathroom	2790 x 1705	9'1" x 5'7"

NOTE En-Suite width on plot 10 is 2410



3-Bedroom Apartment with Balcony

- Great corner aspect apartment
- Well-equipped kitchen leading to spacious lounge
- Lounge has double aspect windows and door to balcony
- All bedrooms have built-in wardrobes
- En-suite to bedroom 1
- Family bathroom between bedrooms 2 and 3
- Good storage

The Fife

The indicative internal images shown are of typical version of this house type, the specification depicted may vary to that in the version of this house type at Stewart Gardens Apartments. Some internal images contain upgrades to fixtures, fittings and appliances and these may not be included in the sale price. Dimensions taken at the position of the arrows. Please ask your Sales Consultant for the full details of the specification and pricing. The particulars, prices, illustrations and plans in this brochure are intended to give a fair description of the properties but their accuracy is not guaranteed and they do not form part of any contract. Mactaggart & Mickel reserve the right to alter prices, specifications and equipment as necessary. Please ask your Sales Consultant for details.