



Coopers

Coopers

Lamerton Close, Wyken, Coventry CV2 3AL

Price: Offers In Excess of £195,000



Lamerton Close

Wyken, Coventry

Spacious, extended 2-bed semi-detached bungalow on quiet close with green views. Features extended kitchen, large living room, driveway, private garden. Easy access to amenities and city centre. No chain.

Council Tax band: B

Tenure: Freehold

EPC Energy Efficiency Rating: D

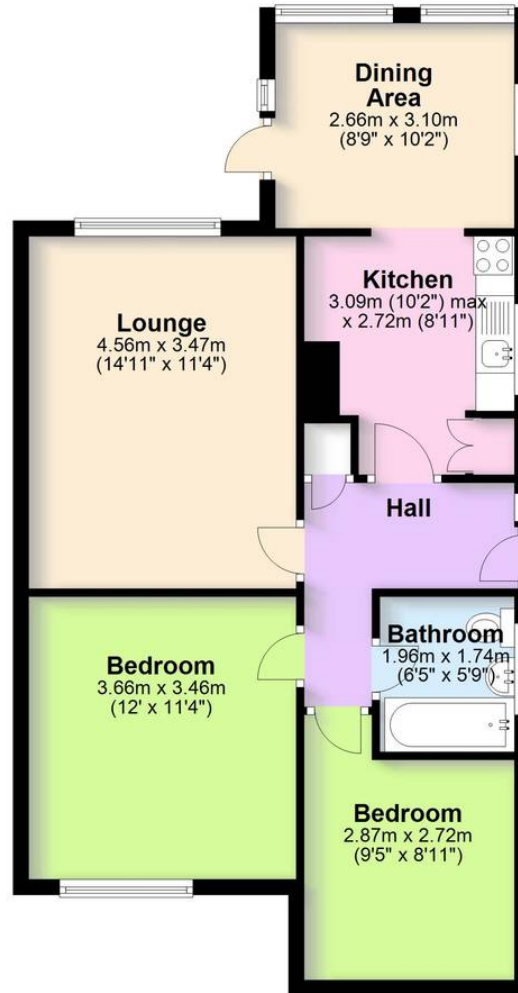
EPC Environmental Impact Rating:

- Spacious bungalow offered with no upward chain
- Two good sized bedrooms
- Extended kitchen with breakfast/dining area
- Private rear garden
- Front driveway parking
- Overlooking public green space at the front





Ground Floor



Total area: approx. 64.3 sq. metres (692.1 sq. feet)

This floor plan is for illustrative purposes only and should be used as such by any prospective purchaser. Whilst every attempt has been made to ensure the accuracy of this plan, measurements of doors, windows, rooms and other items are approximate and no responsibility is taken for any error, omission or mis-statement.

Plan produced using PlanUp.

Coopers Estate Agents

Coopers, 22 New Union Street - CV1 2HN

Coopers

Coopers Chartered Surveyors Ltd, 22 New Union Street, Coventry, West Midlands

CV1 2HN, 024 7655 2841, sales@coopers-cov.com. Company Registration

Number: 6725089 / VAT number: 940 3555 34

024 7655 2841 • sales@coopersstateagents.com • www.coopersstateagents.com/