



- Three double bedrooms
- Arranged over two floors
- Balcony and communal garden
- Located close to station
- Many local amenities and attractions
- Offered for chain chain free

20 Bromfield Court, Jamaica Road, London, SE16 4SG

Asking Price Of £525,000

Situated moments from Bermondsey Underground Station this three double bedroom, split level flat boasts a large living space with balcony, modern kitchen and bathroom, ample storage and communal garden. Being offered for sale chain free.

Property Description

Situated moments from Bermondsey Underground Station this three double bedroom, split level flat boasts a large living space with balcony, modern kitchen and bathroom, ample storage and communal garden. Being offered for sale chain free.

This property has the feeling of a house due to it being arranged over two levels, with the living spaces downstairs and the three bedrooms and bathrooms upstairs. Unlike a house it enjoys an elevated position with a balcony off the lounge. In our opinion it would make a fantastic family home or perfect buy to let investment given the rental market and demand for extra space for families in the area.

Bromfield Court is located less than 200 yards from Bermondsey Station and is surrounded by shops, café's, restaurants and trendy food markets. Shad Thames, the river and London Bridge are also close by.

Service Charge approx. £2087. Square footage approx. 801. Council Tax Band C. Lease remaining approx. 83 years. EPC Rating C

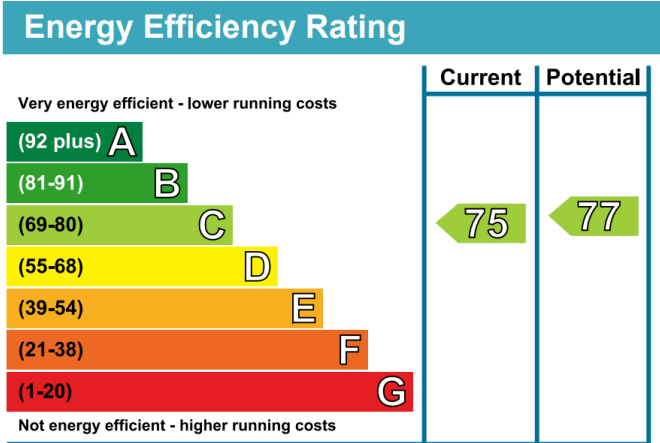
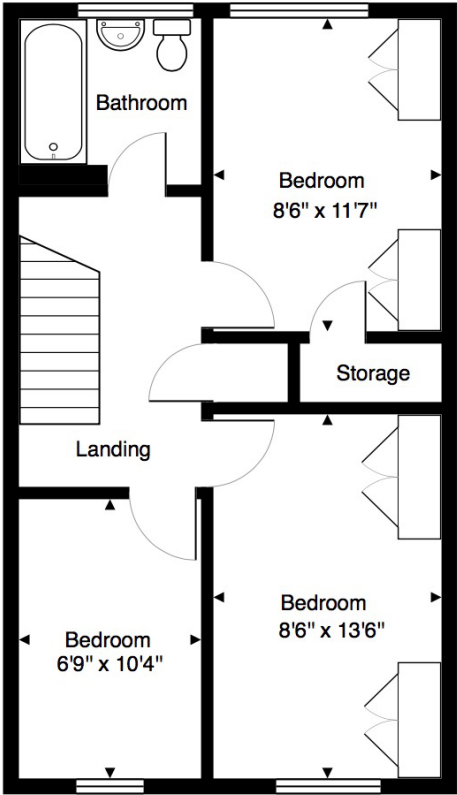
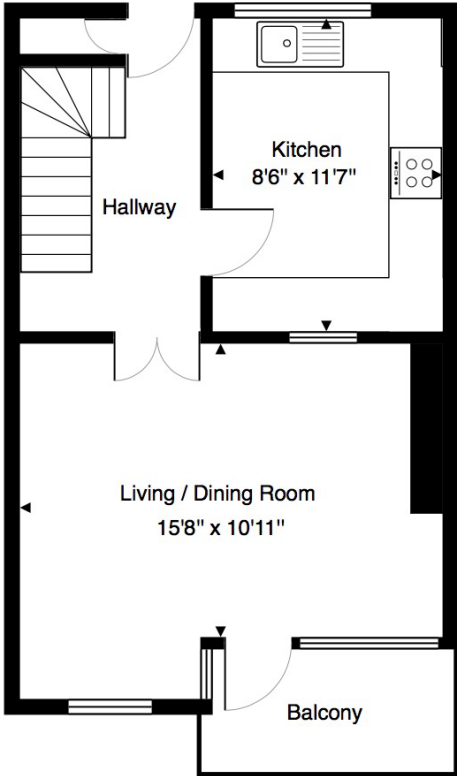




Flat 20, Bromfield Court, Jamaica Road, London, SE16 4SG

Total Area: 801 ft²

All measurements are approximate and for display purposes only



6-8 Cole Street, Trinity Village,
London, SE1 4YH

www.independentlondon.co.uk
020 7099 6373
steve@independentlondon.net

Agents Note: Whilst every care has been taken to prepare these sales particulars, they are for guidance purposes only. All measurements are approximate and for general guidance purposes only and whilst every care has been taken to ensure their accuracy, they should not be relied upon and potential buyers are advised to recheck the measurements