



Lansdown Road

Sidcup
DA14 4EG

Freehold

3 bedroom end of terrace house
Built 2003
Off street parking to the front
Convenient for Sidcup station, shops. Parks and schools
Rear garden laid to lawn with decking area
2 reception rooms
3 bedrooms



FULL DESCRIPTION

This modern 3 bedroom end of terrace house was built in 2003 and blends in perfectly with the adjacent properties. It is situated in a popular residential road only a short walk from Sidcup station, shops, parks and schools.

The accommodation briefly comprises: Entrance hall, front lounge, rear dining room and kitchen, both with doors opening onto the rear garden. The first floor has three bedrooms and bathroom.

Externally there is off street parking to the front and rear garden laid to lawn with decking area.

Directions

From our Sidcup office, turn left and proceed along Station Road, at the traffic lights turn left into Hatherley Crescent. Turn immediate right into Hatherley Road and take the first turning on the left into Alma Road. This in turn becomes Lansdown Road. Closest Stations: Sidcup (0.30 mi) Albany Park (0.84 mi) New Eltham (1.65 mi) Closest Schools: Birkbeck Primary School (0.15 mi) West Lodge School (0.28 mi) Chislehurst and Sidcup Grammar School (0.38 mi)





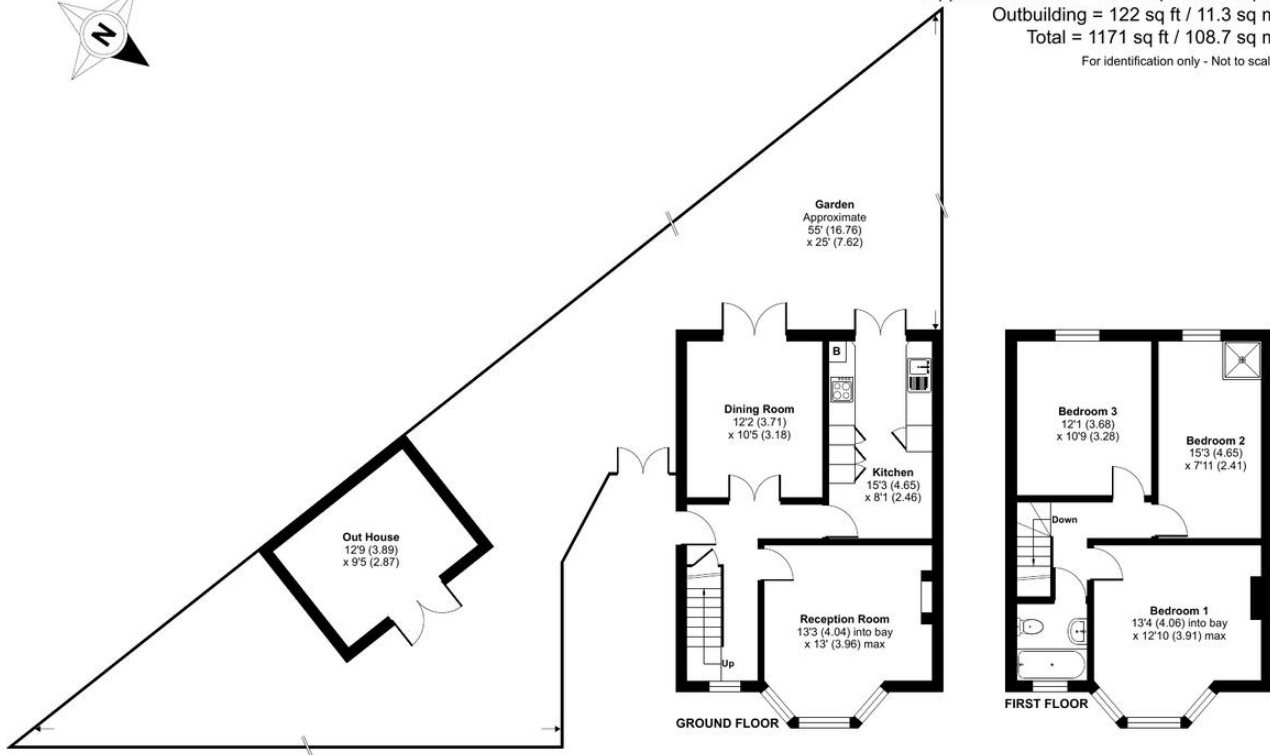
Local Authority
Council Tax Band
EPC Rating

Bexley London Borough Council
E
C



Lansdown Road, Sidcup, DA14

Approximate Area = 1049 sq ft / 97.4 sq m
Outbuilding = 122 sq ft / 11.3 sq m
Total = 1171 sq ft / 108.7 sq m
For identification only - Not to scale



 Floor plan produced in accordance with RICS Property Measurement Standards incorporating International Property Measurement Standards (IPMS2 Residential). © rntecom 2024. Produced for Drewery. REF: 1174528

Drewery Property Consultants
128 Station Road
Sidcup
Kent
DA15 7AF

Contact
020 8269 6605
info@drewery.co.uk
www.drewery.co.uk

Agents Note: Whilst every care has been taken to prepare these particulars, they are for guidance purposes only. All measurements are approximate and are for general guidance purposes only and whilst every care has been taken to ensure their accuracy, they should not be relied upon and potential buyers/tenants are advised to recheck the measurements.