



The Warmington

4 bedroom detached house with garage

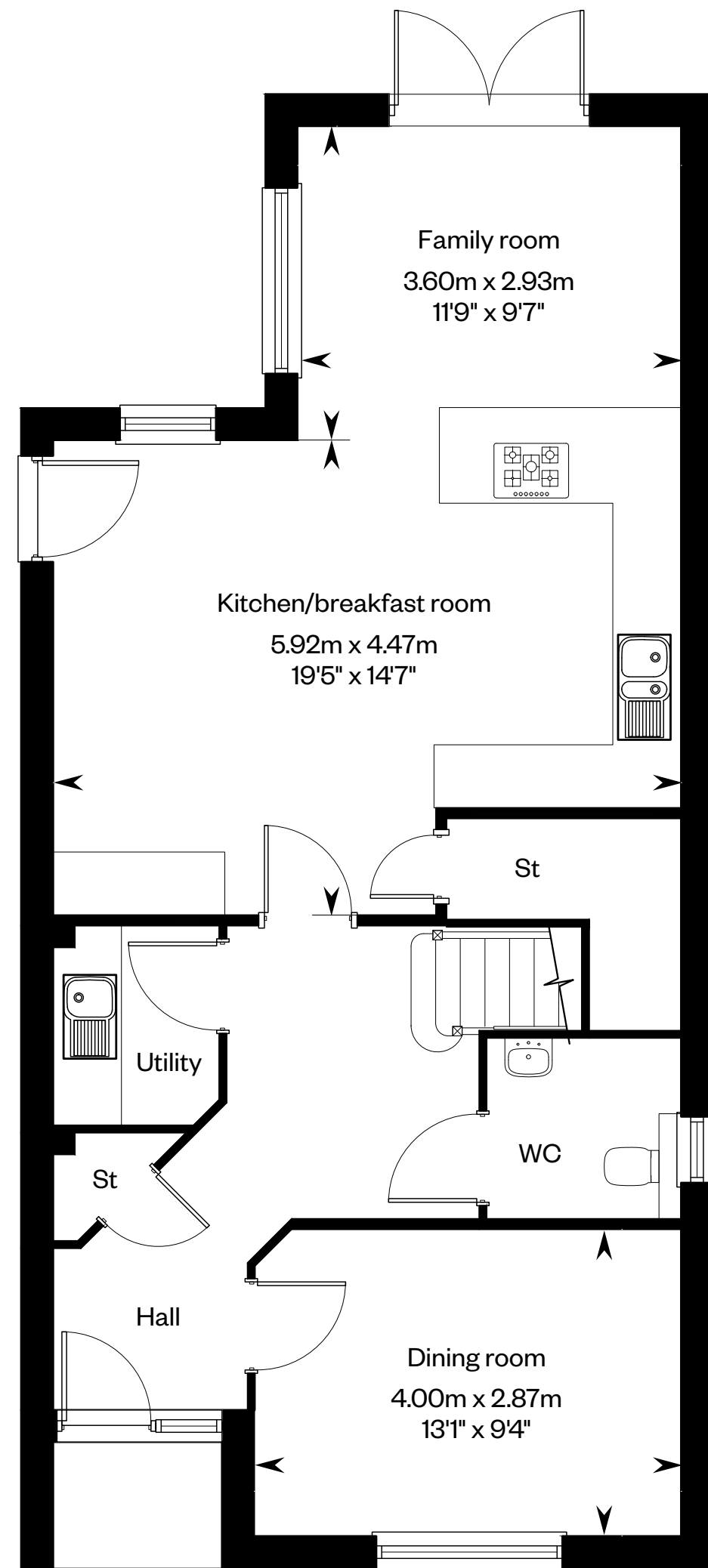
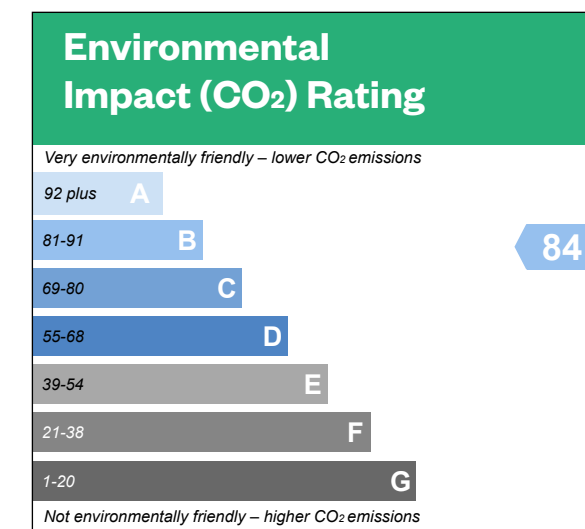
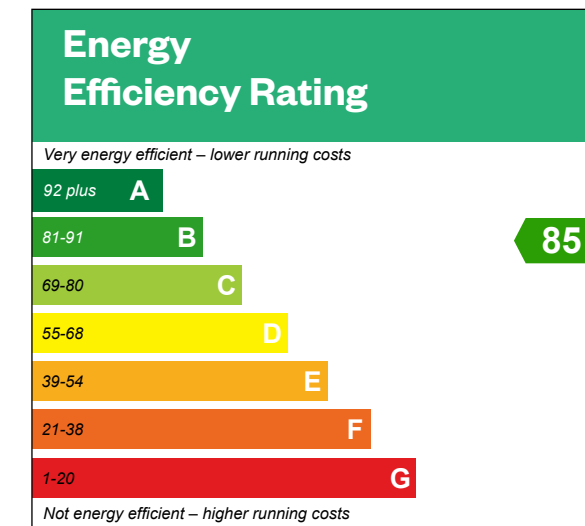


Computer generated image - The Warmington

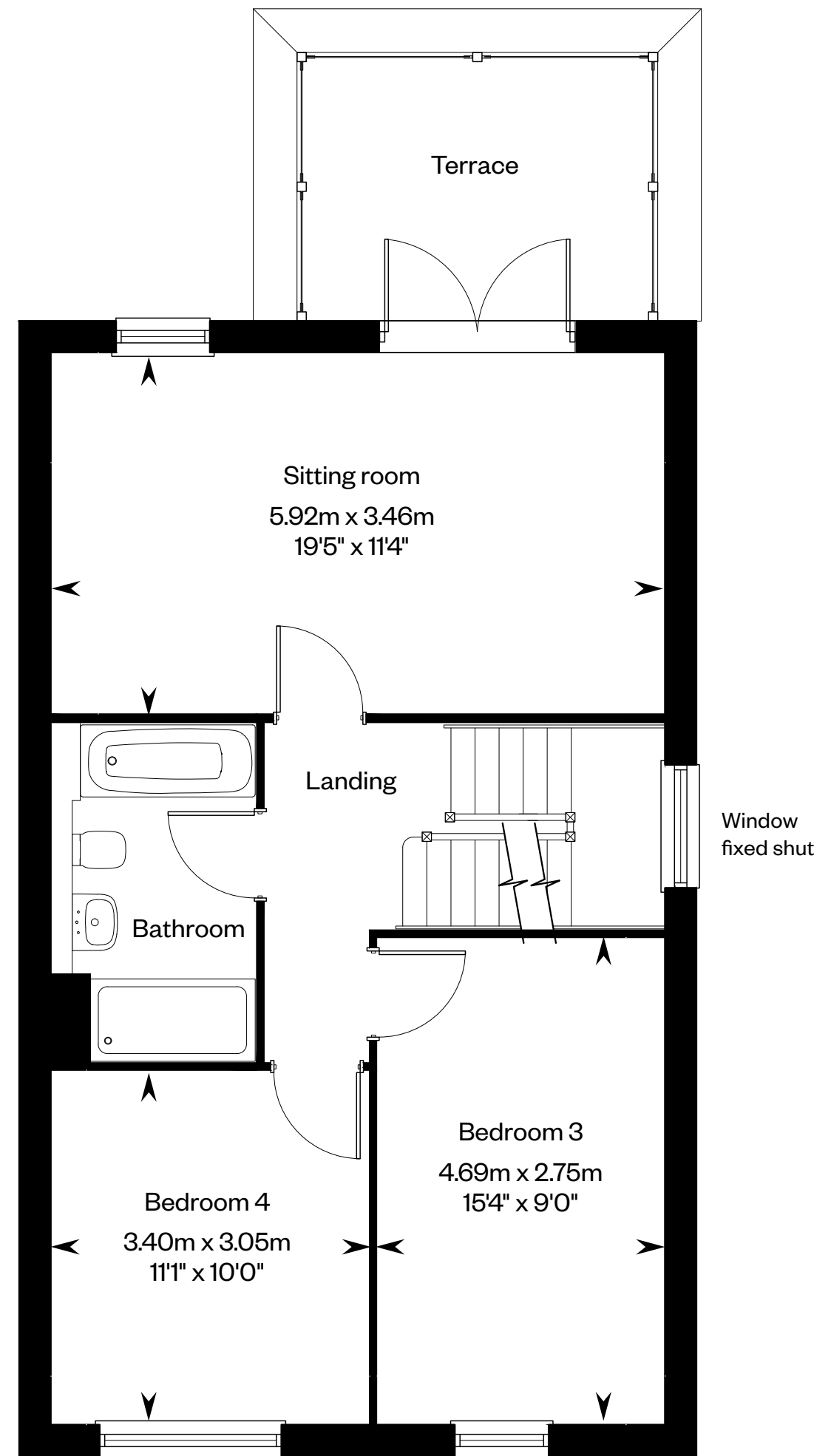
The Warmington

Plots 333 & 334 – as shown

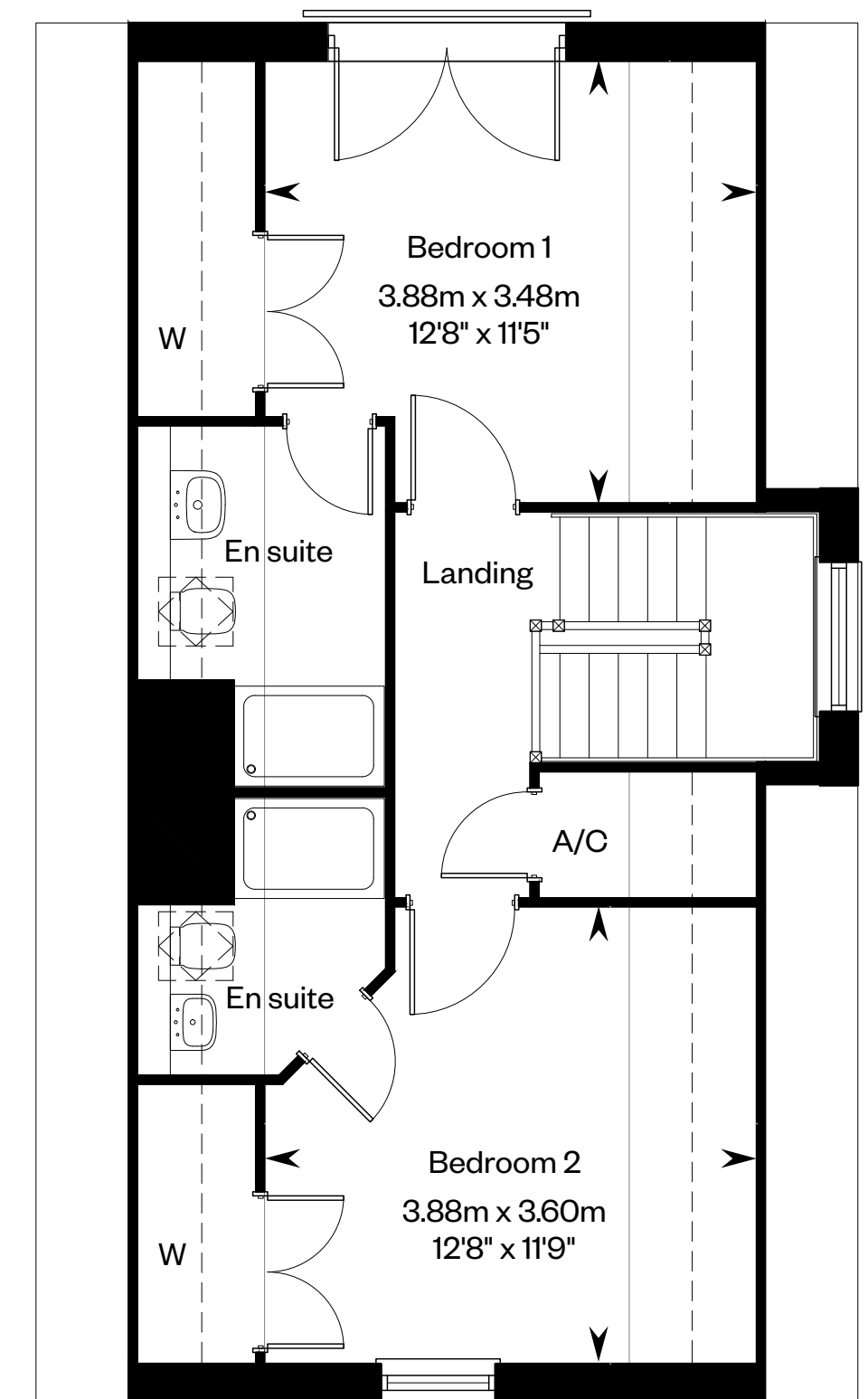
Plots 340, 341, 344–346 & 349 – handed



Ground floor



First floor



Second floor

Dotted lines denote reduced head height or structure above and approximate position of 1800mm ceiling height to second floor. Solid thin line denotes extent of full height ceiling.
St: Storage cupboard. A/C: Airing Cupboard. W: Wardrobe. ☼: Roof light.

IMPORTANT NOTICE TO CUSTOMERS: The Consumer Protection from Unfair Trading Regulations 2008. Cala Homes (North Home Counties) Limited operates a policy of continual product development and the specifications outlined in this brochure are indicative only. The computer generated images and photographs do not necessarily represent the actual finishings/elevation or treatments, landscaping, furnishings and fittings at this development. Information contained is accurate at date of publication on 13.12.22. See the main brochure for the full Consumer Protection statement. This is a Predicted Energy Assessment for properties that are incomplete. Once the property is completed, this rating will be updated and an official Energy Performance Certificate will be created for the property.