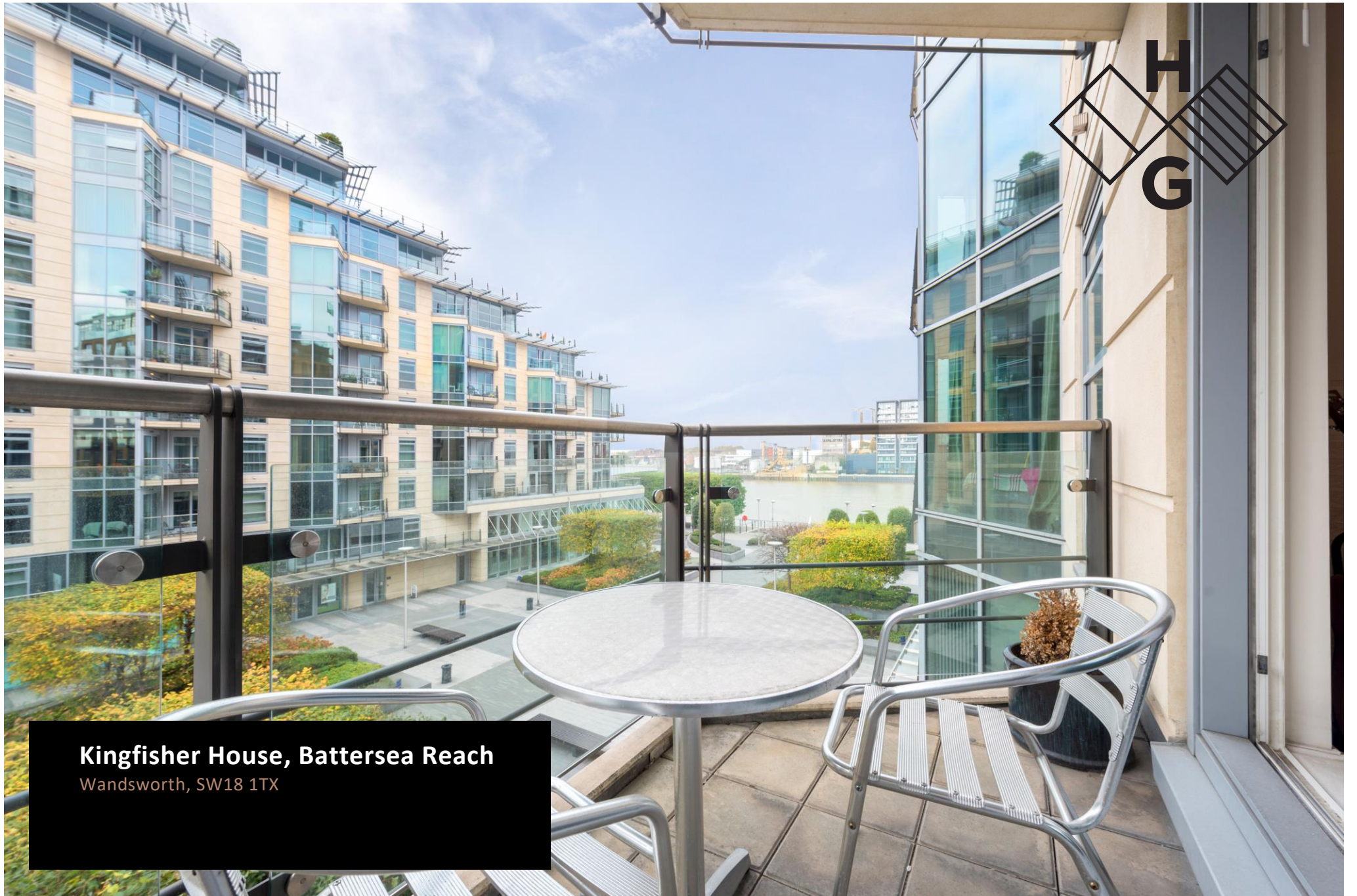




Kingfisher House, Battersea Reach
Wandsworth, SW18 1TX



PROPERTY SUMMARY

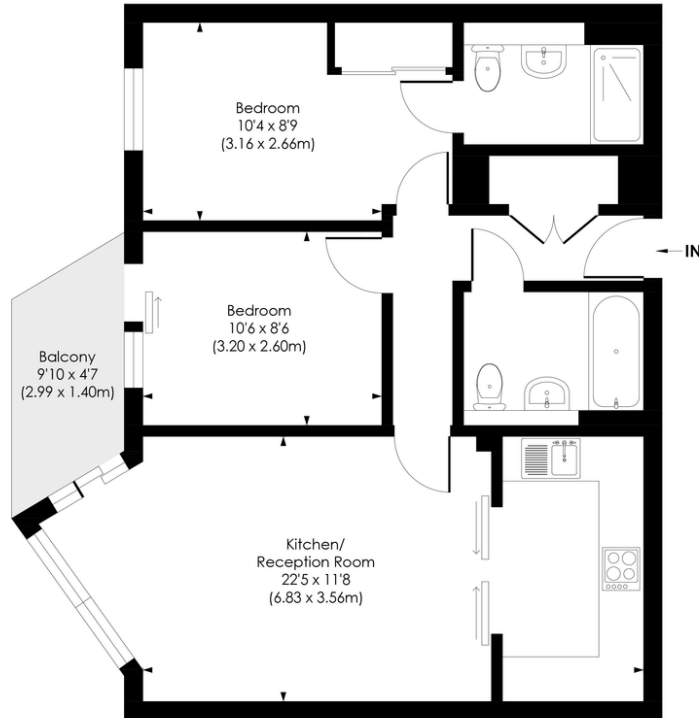
A beautiful two bedroom apartment within the award winning Battersea Reach development is now available to let. The property boasts beautiful views over the landscaped communal gardens to the river Thames, from the privacy of its own balcony. Additionally, this apartment offers underfloor heating throughout and secure underground parking for one car is available by separate negotiation.





KINGFISHER HOUSE SW18

Approx. Gross Internal Floor Area
680 Sq. Ft/63.15 Sq. m



LOCAL AUTHORITY

Wandsworth Borough Council

TENURE

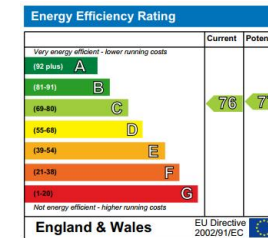
Leasehold

COUNCIL TAX BAND

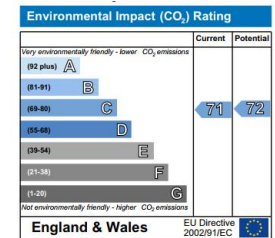
Band F

VIEWINGS

By prior appointment only



The energy efficiency rating is a measure of the overall efficiency of a home. The higher the rating the more energy efficient the home is and the lower the fuel bills are likely to be.



The environmental impact rating is a measure of a home's impact on the environment in terms of carbon dioxide (CO₂) emissions. The higher the rating the less impact it has on the environment.

Agents Note: Whilst every care has been taken to prepare these particulars, they are for guidance purposes only. All measurements are approximate and are for general guidance purposes only and whilst every care has been taken to ensure their accuracy, they should not be relied upon and potential buyers/tenants are advised to recheck the measurements

© Pixangle Property Marketing Ltd. info@pixangle.com Tel: 0208 870 2118
 This floor plan has been prepared for the purpose of illustration only in accordance with the latest RICS code of measuring practice and is not to scale.
 All measurements and areas are approximate and whilst every effort has been made to ensure the accuracy of the plan contained here, no responsibility is taken for any error, omission or misstatement.



4 Vicentia Court
Bridges Wharf
London
SW11 3GY

02073522455
info@hgproperty.co.uk
www.hgproperty.co.uk