

The Hawthorns

Epsom

£500,000

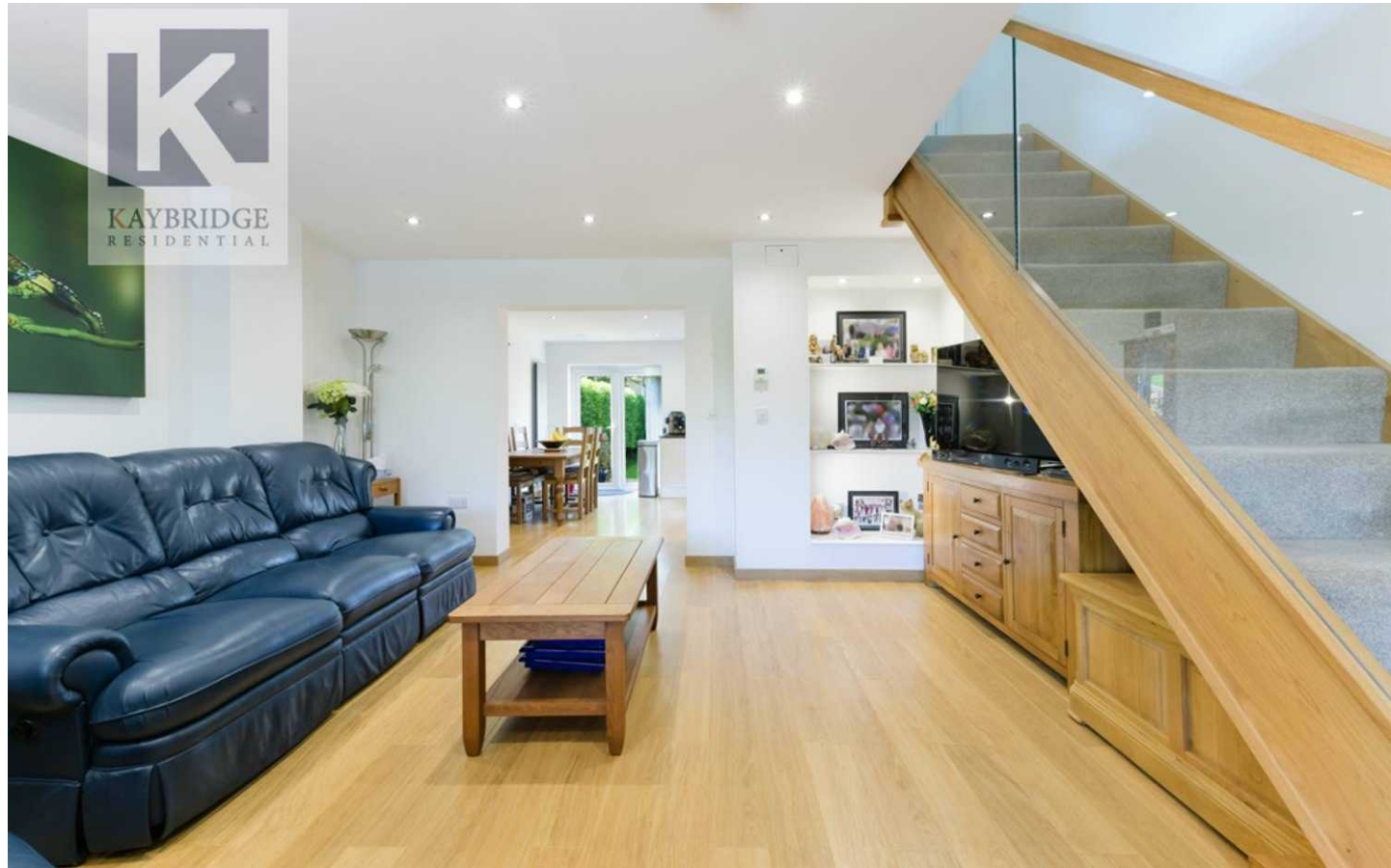
# The Hawthorns

## Epsom

- Over 900sqft
- Two-double bedrooms
- Fully renovated
- Close proximity to mainline station and schools
- Ensuite main bedroom
- Short walk to Ewell Village
- Off-street parking
- No-onwards chain
- End-terraced

Kaybridge Residential Ewell are pleased to present this impeccably presented 2 bedroom end of terrace home offers over 900 square feet of living space, situated in a sought-after location, The property has been fully renovated to the highest standard, boasting two double bedrooms, with the main bedroom benefitting from an ensuite bathroom. The modern kitchen and spacious living areas provide a comfortable and inviting atmosphere.

Conveniently located close to the mainline station and local schools, this property is ideal for busy professionals or families seeking easy commuting access. Ewell Village is just a short walk away, offering a range of amenities and a charming community atmosphere.





## The Hawthorns

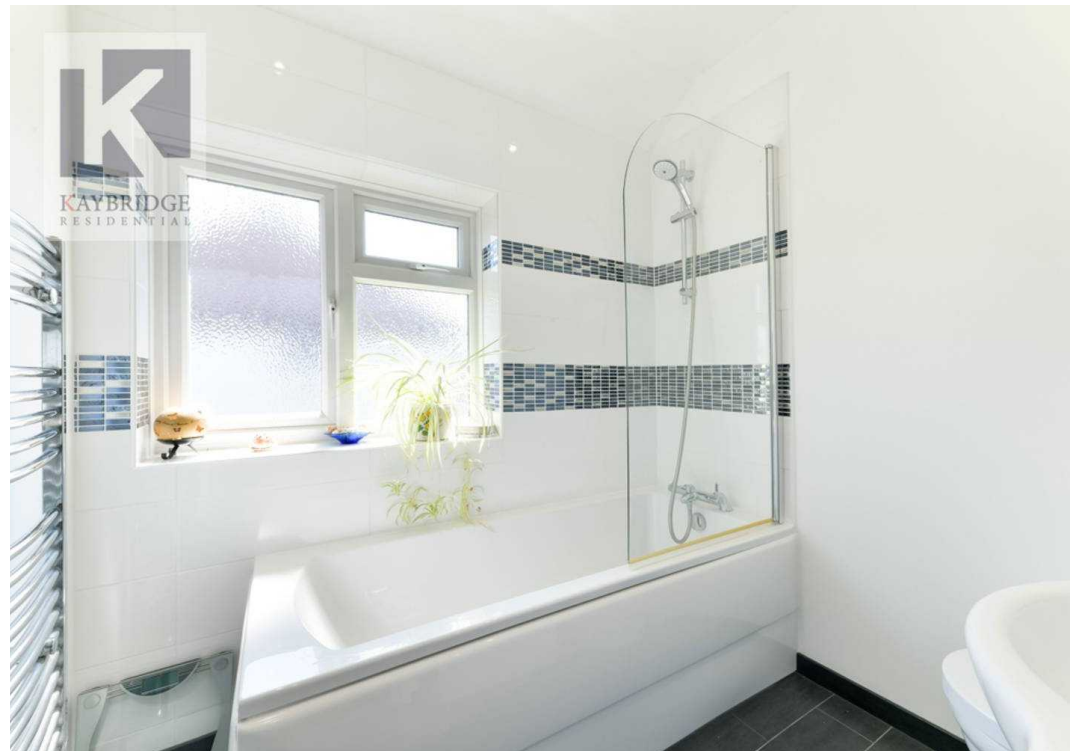
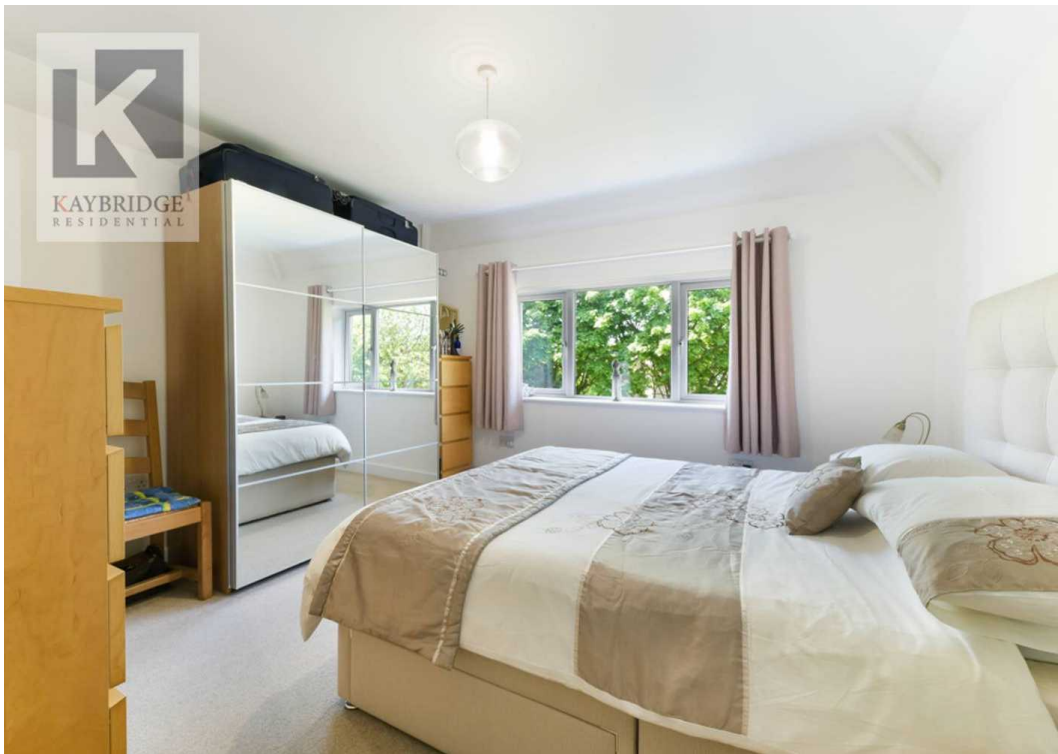
Epsom

Further features include off-street parking, ensuring convenience for residents with vehicles. This property is offered with no onwards chain, making it an attractive option for buyers looking for a hassle-free purchase. Don't miss the opportunity to view this end-terraced gem, which combines modern living with a prime location.

Council Tax band: D

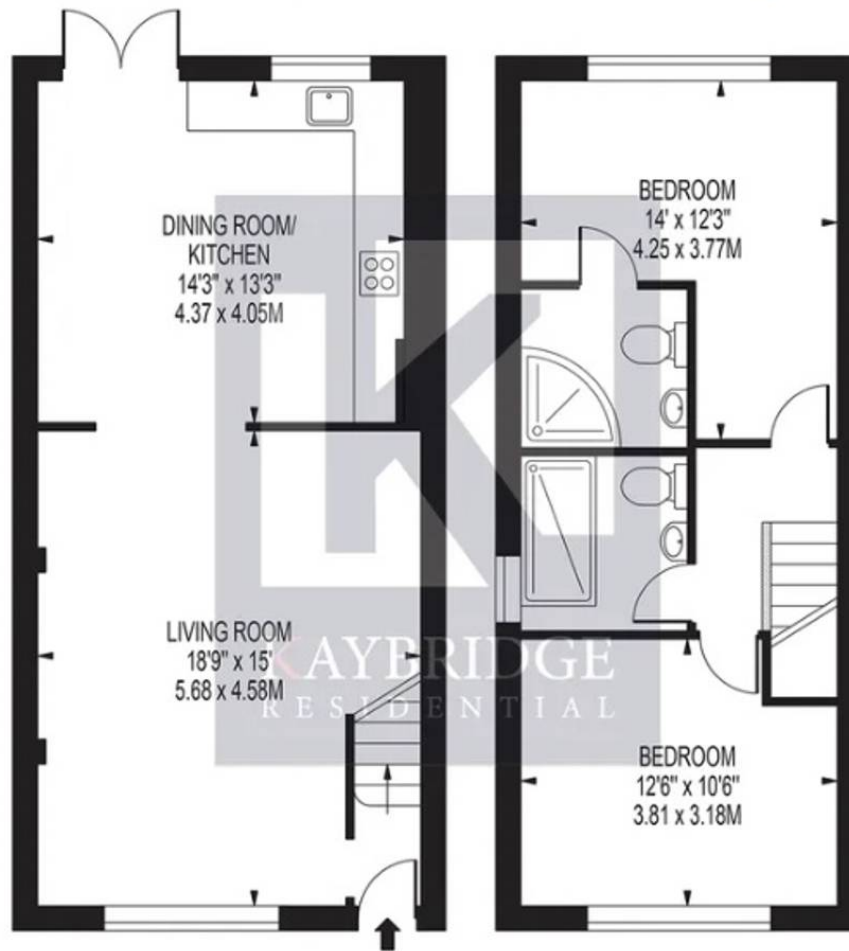
Tenure: Freehold





# THE HAWTHORNS

APPROXIMATE GROSS INTERNAL FLOOR AREA: 85.7m<sup>2</sup> 922sqft



FOR ILLUSTRATION PURPOSES ONLY

THIS FLOOR PLAN SHOULD BE USED AS A GENERAL OUTLINE FOR GUIDANCE ONLY AND DOES NOT CONSTITUTE IN WHOLE OR IN PART AN OFFER OR CONTRACT. ANY INTENDING PURCHASER OR LESSEE SHOULD SATISFY THEMSELVES BY INSPECTION, SEARCHES, ENQUIRIES AND FULL SURVEY AS TO THE CORRECTNESS OF EACH STATEMENT. ANY AREAS, MEASUREMENTS OR DISTANCES QUOTED ARE APPROXIMATE AND SHOULD NOT BE USED TO VALUE A PROPERTY OR BE THE BASIS OF ANY SALE OR LET.



## Kaybridge Residential Epsom

Kaybridge Residential Estate Agents, 23 Stoneleigh Broadway - KT17 2JE

02080040474 • [info@kbridge.co.uk](mailto:info@kbridge.co.uk) • [www.kaybridgeresidential.co.uk/](http://www.kaybridgeresidential.co.uk/)