



Rugby Road, Binley Woods, Coventry CV3 2AY

Guide Price £315,000





## Rugby Road

Binley Woods, Coventry

A well maintained semi-detached property well set back from the road. Hall with WC, living room, dining room and kitchen. Two bedrooms and bathroom. Large driveway, garage and lovely rear garden overlooking countryside.

Council Tax band: C

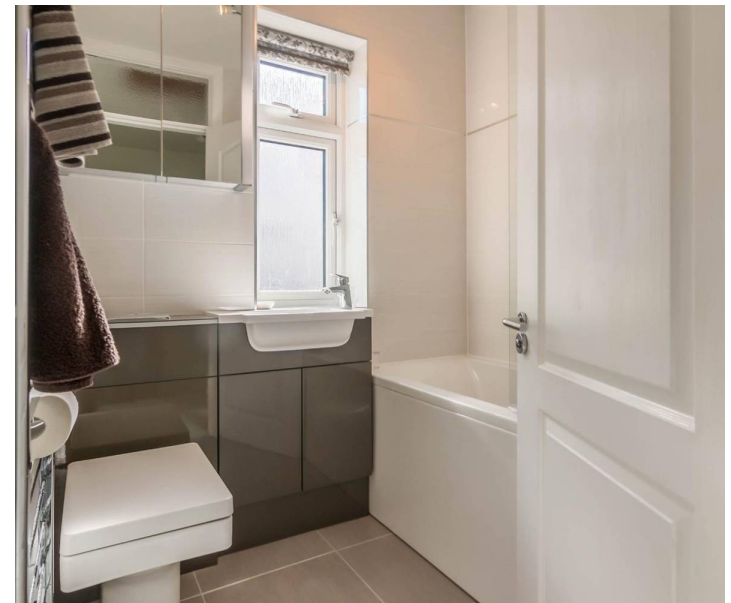
Tenure: Freehold

EPC Energy Efficiency Rating: D

EPC Environmental Impact Rating: E

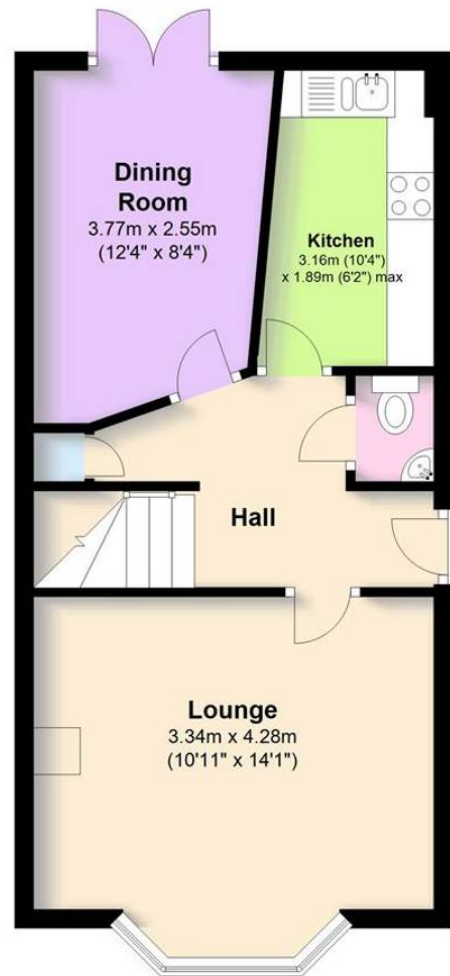
- Well maintained semi detached property
- Popular location
- Two bedrooms and modern bathroom.
- Lovely gardens with open views at rear.
- New insulation, early inspection advised.
- Living room, dining room and kitchen



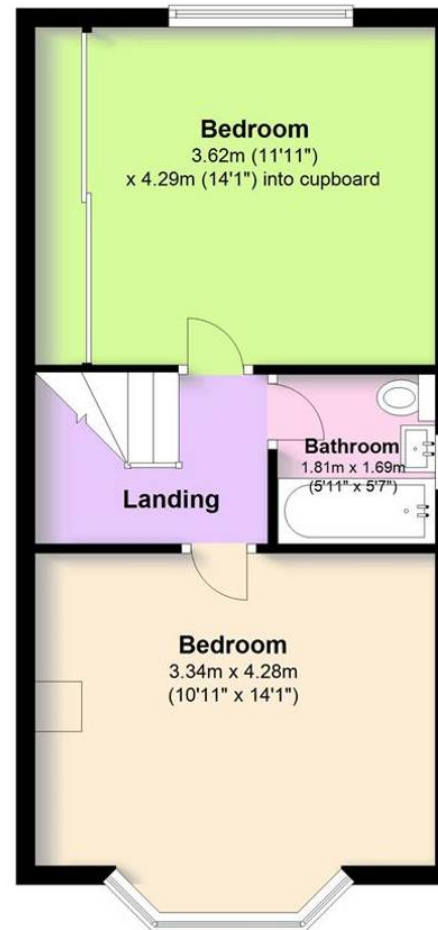




## Ground Floor



## First Floor



This floor plan is for illustrative purposes only and should be used as such by any prospective purchaser. Whilst every attempt has been made to ensure the accuracy of this plan, measurements of doors, windows, rooms and other items are approximate and no responsibility is taken for any error, omission or mis-statement.

Plan produced using PlanUp.

**Coopers Estate Agents**

Coopers, 22 New Union Street - CV1 2HN

**Coopers**

024 7655 2841 • [sales@coopersestateagents.com](mailto:sales@coopersestateagents.com) • [www.coopersestateagents.com/](http://www.coopersestateagents.com/)

Coopers Chartered Surveyors Ltd, 22 New Union Street, Coventry, West Midlands

CV1 2HN, 024 7655 2841, [sales@coopers-cov.com](mailto:sales@coopers-cov.com). Company Registration

Number: 6725089 / VAT number: 940 3555 34