

£358 pw
Spinnaker House
Battersea Reach, SW18 1FR

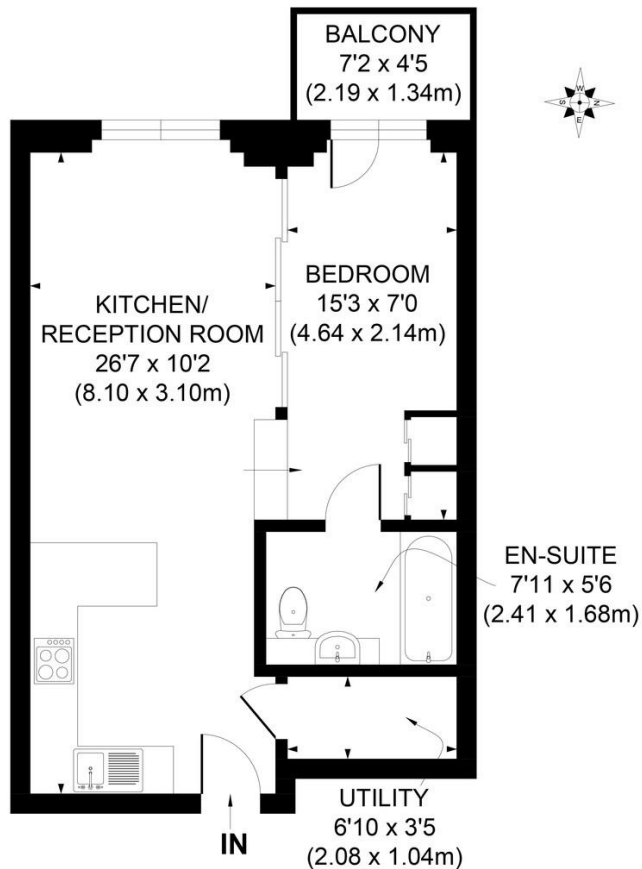
PROPERTY SUMMARY

A one bedroom Manhattan apartment in Spinnaker House part of the award winning Battersea Reach Riverside development. The apartment is spacious and well thought out, offering good storage and high quality fixtures and fittings.

The kitchen is fitted with top of the range Siemens appliances and there is a washer/dryer located in the large utility cupboard. Underfloor heating throughout, independent to each room. A balcony is located off the bedroom with a westerly aspect, so ideal for taking in the afternoon and evening sun.







FIRST FLOOR

APPROX. GROSS INTERNAL FLOOR AREA 459 SQ. FT / 42.65 SQ. M

Illustration for identification purpose only, not to scale
All measurements are maximum, and includes wardrobes and window bays where applicable
Prepared by Pixangle ©, Tel 020 8870 2118

LOCAL AUTHORITY
Wandsworth Borough Council

FURNISHED

COUNCIL TAX BAND
Band

VIEWINGS
By prior appointment only

Energy Efficiency Rating		
	Current	Potential
Very energy efficient - lower running costs		
100-100 A		
81-91 B	83	85
69-80 C		
55-68 D		
39-54 E		
22-38 F		
1-20 G		
Not energy efficient - higher running costs		
England & Wales	EU Directive 2002/91/EC	

Agents Note: Whilst every care has been taken to prepare these particulars, they are for guidance purposes only. All measurements are approximate and are for general guidance purposes only and whilst every care has been taken to ensure their accuracy, they should not be relied upon and potential buyers/tenants are advised to recheck the measurements



4 Vicentia Court
Bridges Wharf
London
SW11 3GY

02073522455
info@hgproperty.co.uk
www.hgproperty.co.uk