



mcfarlane

Ivy Court, Pasteur Drive, Pasteur Drive
Swindon

£150,000



Ivy Court, Pasteur Drive , Swindon

McFarlane Sales & Lettings are pleased to offer to market this well appointed two-bedroom apartment. Accommodation briefly comprises a modern fitted kitchen, sitting/dining room with Juliette balcony, two double bedrooms with the master bedroom benefitting from built in wardrobes and a refitted three-piece shower room. Further benefits include double glazing throughout, close to local shops and amenities, secure entry phone system and parking for one car.

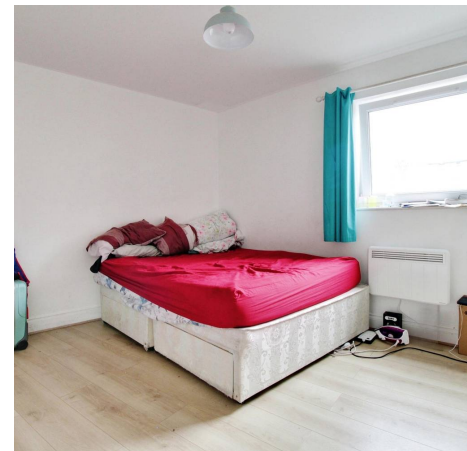
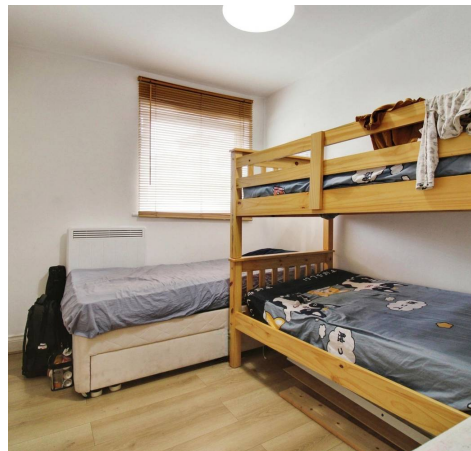
Council Tax band: C

Tenure: Leasehold

EPC Energy Efficiency Rating: D

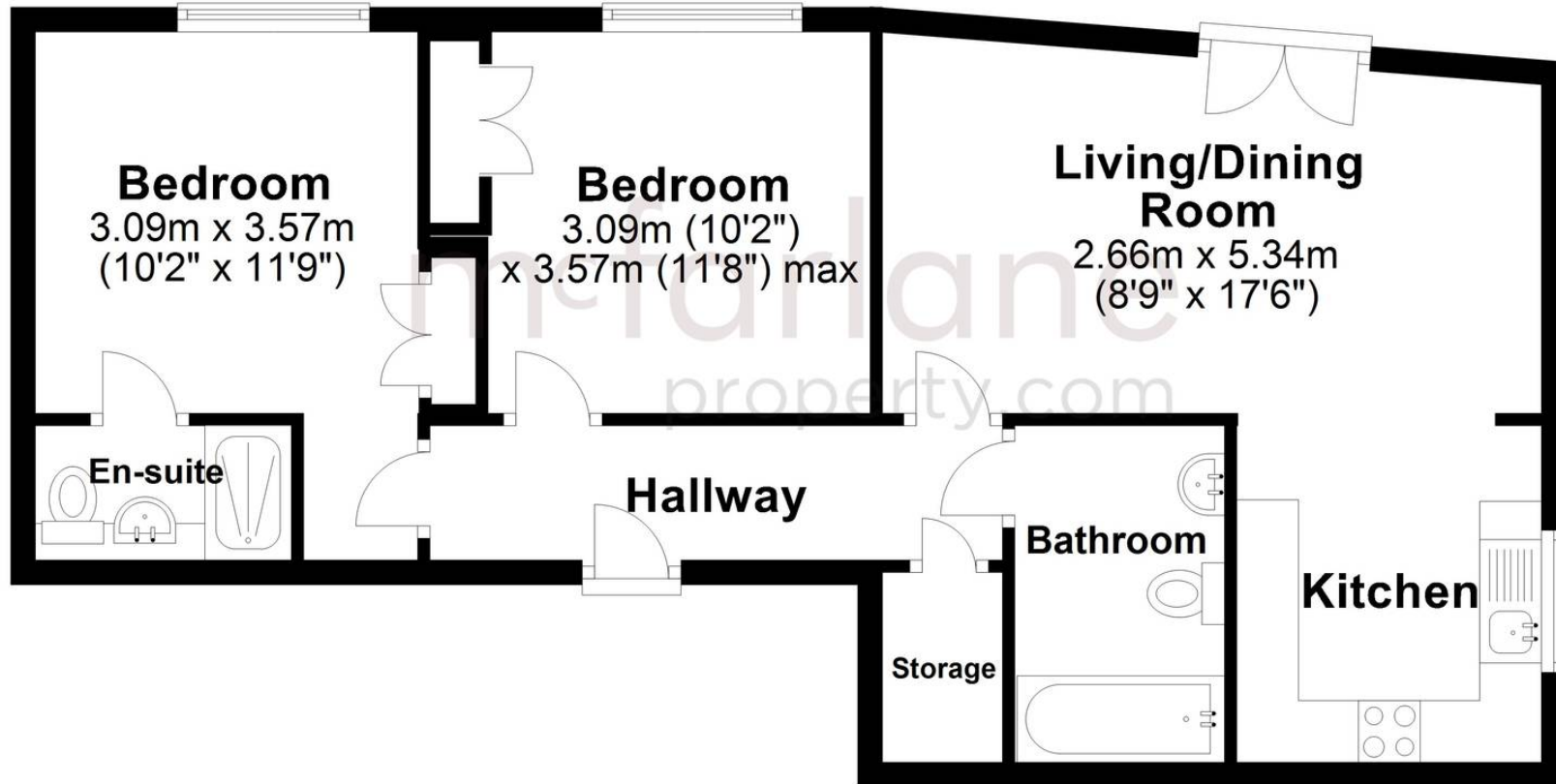
EPC Environmental Impact Rating: C

- OLD TOWN LOCATION
- OPEN PLAN LIVING
- NO ONWARD CHAIN
- FITTED WARDROBES
- TWO DOUBLE BEDROOMS
- EN-SUITE TO MASTER
- MODERN SPACIOUS KITCHEN



First Floor

Approx. 59.8 sq. metres (643.8 sq. feet)



Total area: approx. 59.8 sq. metres (643.8 sq. feet)