



Flat 14, Baltic Quay, 1 Sweden Gate

Surrey Quays, London

Guide Price £710,000



Flat 14 Baltic Quay, Surrey Quays, London

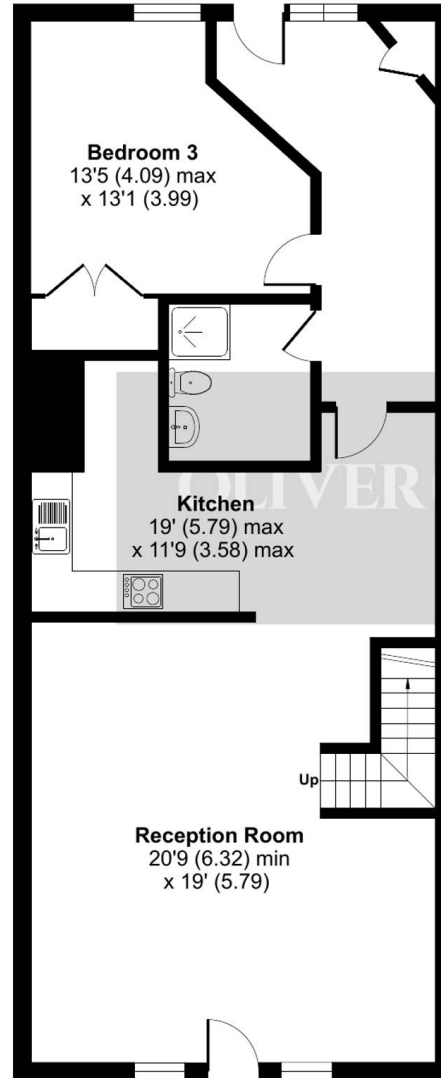
A rare opportunity to purchase a spacious Duplex style apartment within this iconic building of individual award winning architecture and extending to 1694 sq ft. The accommodation presents flexible versatility with the ground floor briefly comprising of impressive reception space with lounge and dining areas, kitchen/breakfast room, rear lobby, shower room and double bedroom. The first floor is accessed by a sweeping staircase in the main reception room and in turn provides access to a mezzanine reception area that is currently dressed as an additional living room/library. This floor also includes two further double bedrooms and a four piece bathroom suite. Being a duplex apartment it has fantastic and unique features including a galleried style window facing to a Westerly elevation and enjoying the evening sunshine, a mezzanine style reception space that overlooks the main living room and galleried window, the rear lobby can double up as an office space or small gym, the bedrooms have the benefit of built in wardrobes, the building is maintained to a very high standard and has a 24 hour concierge service, well maintained communal gardens and located on Surrey Dock Marina. Baltic Quay is located on the edge of Surrey Dock Marina and has the advantage of being in close proximity to Surrey Docks Fitness and Water sports. Many love the area for its access to water and green spaces including Southwark Park. However, access to Central London is also very easy with Surrey Quays Overground station (Overground/Zone 2) located just 0.7 miles from the property, this in turn provides access to Whitechapel in under ten minutes.

- Impressive Duplex apartment extending to 1694 sq ft
- Three double bedrooms and two bathrooms

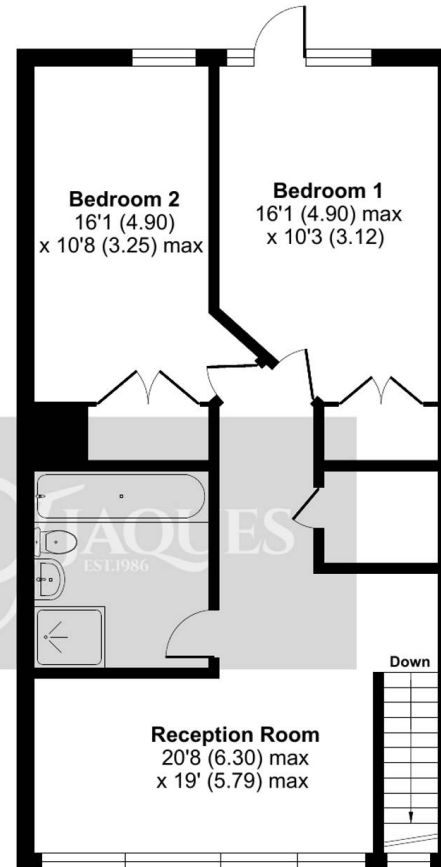
Sweden Gate, London, SE16

Approximate Area = 1694 sq ft / 157.3 sq m

For identification only - Not to scale



GROUND FLOOR



FIRST FLOOR



Floor plan produced in accordance with RICS Property Measurement Standards incorporating International Property Measurement Standards (IPMS2 Residential). © nlcocom 2024. Produced for Oliver Jaques. REF: 1180707



Oliver Jaques

Oliver Jaques, 229-231 Lower Road - SE16 2LW

02072315050 • southeast@o-j.co.uk • o-j.co.uk/