

The Anchorage, Whalley Road, Wilpshire

£499,950 Freehold

EXCEPTIONAL FIVE DOUBLE BEDROOM VICTORIAN SEMI DETACHED PROPERTY. The property is nestled in the picturesque Ribble Valley location. Built in 1912, this property is timeless and elegant.

Council Tax band: E

Tenure: Freehold

EPC Energy Efficiency Rating: E

EPC Environmental Impact Rating:

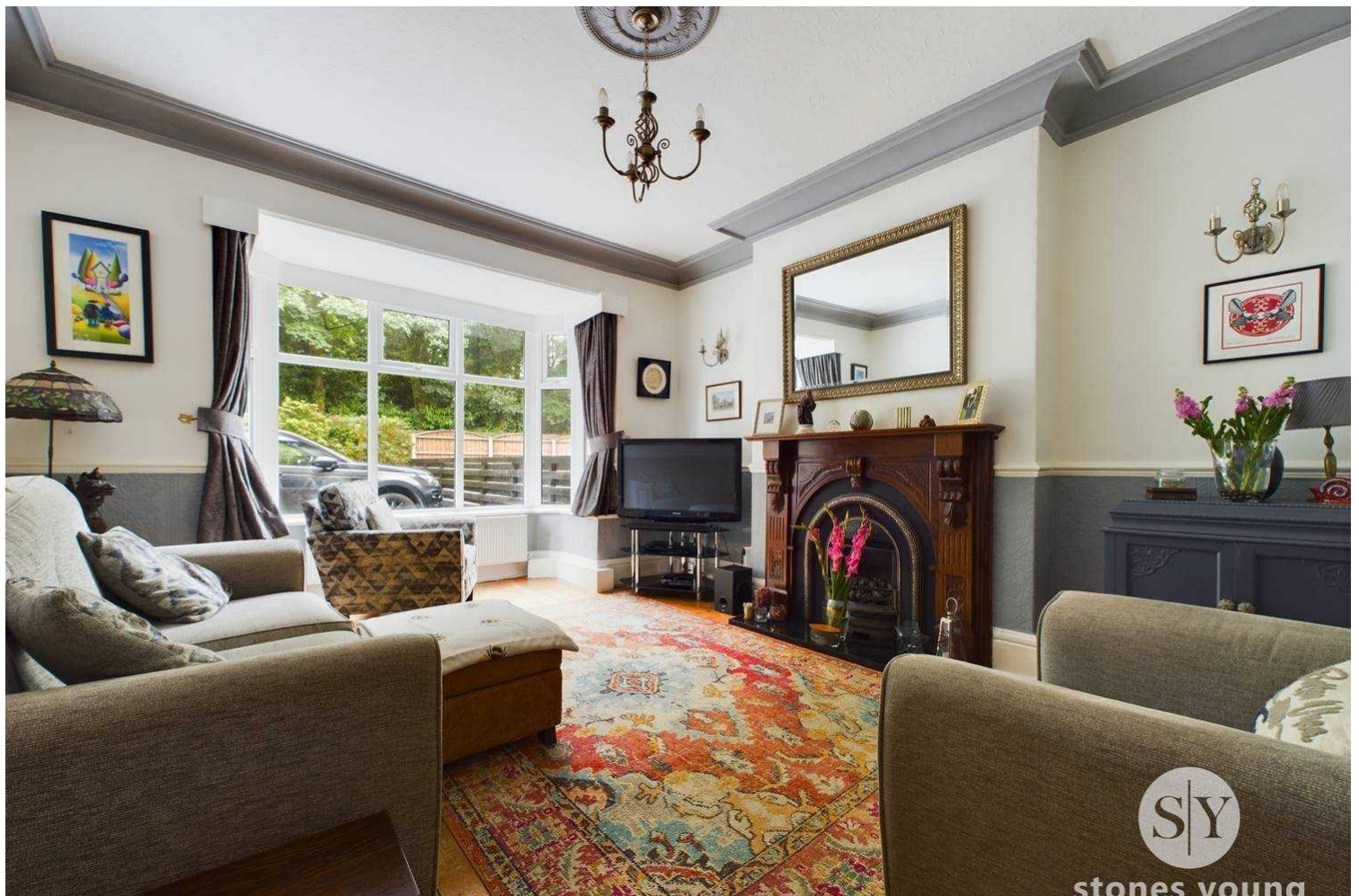


EXCEPTIONAL FIVE DOUBLE BEDROOM VICTORIAN SEMI DETACHED PROPERTY. The property is nestled in the picturesque Ribble Valley location. Built in 1912, this property is timeless and elegant.

As you step through the front door, you are greeted by a sense of grandeur and space. Spread over four floors, this property boasts five generous double bedrooms one has a separate shower and basin. The panoramic views to the rear of the property provide a stunning backdrop that is sure to capture your attention.

One of the standout features of this property is the basement area, which offers versatile living space that could cater for separate living quarters or has the potential to tailor it to your specific needs.

There is an ample amount of parking situated to the front and side of the property. The large rear garden is a true haven, complete with a decked area perfect for al fresco dining, a pond and a sprawling lawn providing the ideal space for outdoor activities.



stones young

Vestibule

Original tiled flooring, double glazed uPVC window, solid wooden front door.

Hallway

Tiled flooring, ceiling coving, stairs to first floor, storage cupboard, panel radiator.

Lounge

Original wooden floor boards, ceiling coving, dado rail, gas fire with Granite hearth and wood surround, double glazed uPVC window, panel radiator.

Lounge 2

Carpet flooring, ceiling coving, feature Sandstone surround, x2 double glazed uPVC windows, panel radiator.

Kitchen

Tiled flooring, fitted wall and base units with contrasting Granite work surfaces, sink and drainer, under counter lights, Rangemaster cooker, extractor fan, tiled splash backs, ceiling spot lights, integral fridge, dishwasher, column radiator.

Basement

Tiled flooring, bespoke cupboards, double glazed uPVC window, panel radiator.

Gym

Vinyl flooring.

Bathroom

Vinyl flooring, two piece in white comprising of mains fed shower and basin, tiled splash backs, storage cupboard.

Wc

Tiled flooring, wc in white.

Garden Room

Wood floor boards, double glazed uPVC window and French doors leading out to decking.

Utility Room

Tiled flooring, fitted wall and base units, Belfast sink, space for washing machine and tumble dryer, boiler and tank, double glazed uPVC window.

Landing

Carpet flooring, stairs to second floor, double glazed uPVC window.

Bedroom One

Master double bedroom with carpet flooring, ceiling coving, double glazed uPVC window, panel radiator.

Bedroom 2

Double bedroom with carpet flooring, ceiling coving, built in storage, walk in shower and sink, x2 double glazed uPVC windows, panel radiator.

En Suite

Vinyl flooring, two piece in white with shower and basin with vanity cupboard, ceiling spot lights.

Bedroom 3

Double bedroom with carpet flooring, picture rail, double glazed uPVC window, panel radiator.

Bathroom 2

Three piece in white comprising of Villeroy & Boch basin, bath and wc. Mains fed shower over bath, tiled splash backs, frosted double glazed uPVC window, towel radiator.

Landing 2

Carpet flooring, wooden framed Velux window.

Bedroom 4

Double bedroom with carpet flooring, under eaves storage, basin with vanity, double glazed uPVC window.

Orangery

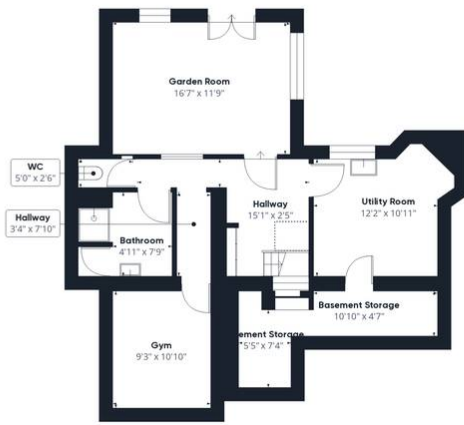
Tiled flooring, double glazed uPVC throughout, Velux windows, ceiling spot lights, panel radiator x2.

Bedroom Five

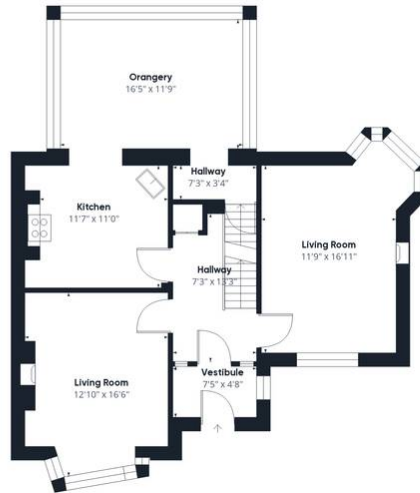
Double bedroom with carpet flooring, basin with vanity, double glazed uPVC window, panel radiator.



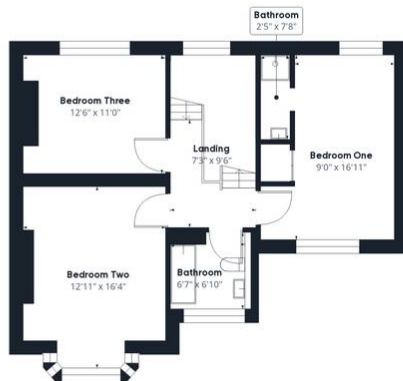




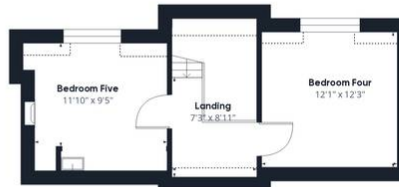
Floor 0



Floor 1



Floor 2



Floor 3

Approximate total area⁽¹⁾

2601.1 ft²

Reduced headroom

39.18 ft²

(1) Excluding balconies and terraces

Reduced headroom

..... Below 5 ft

While every attempt has been made to ensure accuracy, all measurements are approximate, not to scale. This floor plan is for illustrative purposes only.

Calculations are based on RICS IPMS 3C standard.

GIRAFFE360

You can include any text here. The text can be modified upon generating your brochure.