



Old Farm Road East
Sidcup
DA15 8AE

Share of Freehold

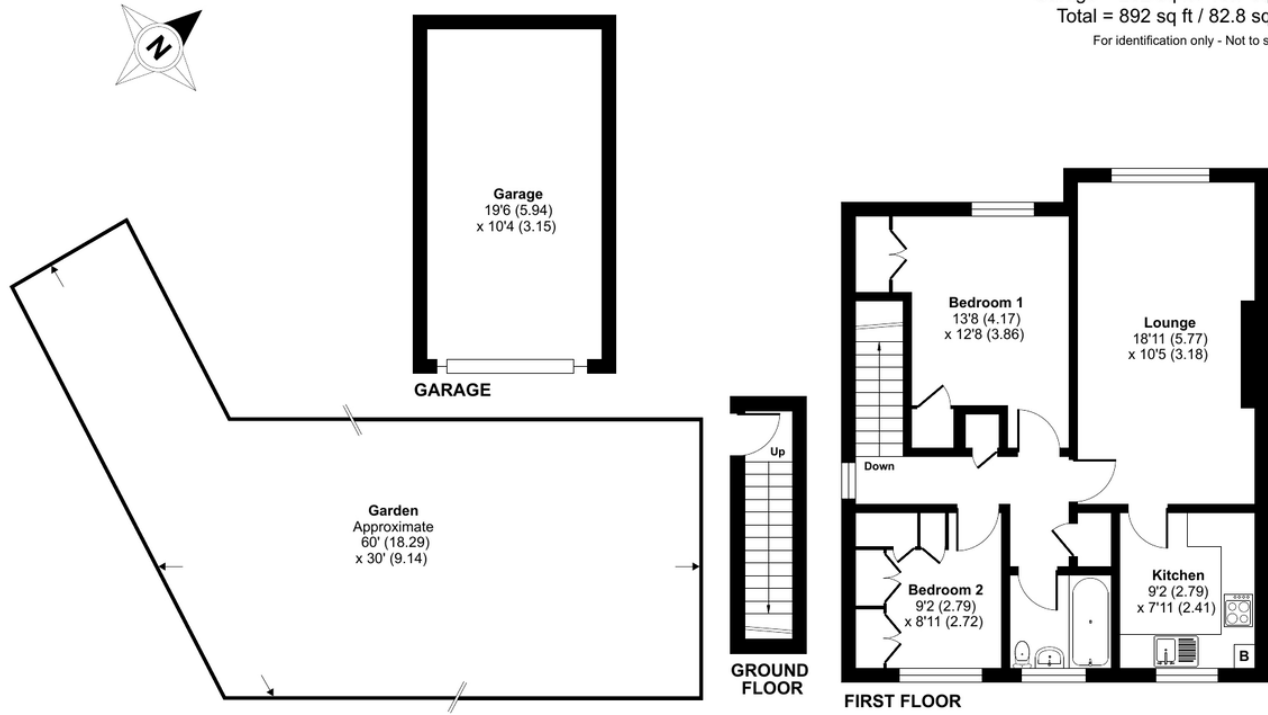
2 bedroom first floor maisonette
Off street parking & garage
Private section of rear garden
Chain Free
Share of Freehold
Ideal first purchase
Convenient for local shops and Sidcup station

Local Authority Bexley London Borough
Council
Council Tax Band C
EPC Rating D

Property is being sold with Share of the Freehold
Lease: 150 years from 9th September 2019 (so 145 years remaining)
Service charge: To be confirmed by solicitor
Ground rent: Peppercorn

Old Farm Road East, Sidcup, DA15

Approximate Area = 690 sq ft / 64.1 sq m
Garage = 202 sq ft / 18.7 sq m
Total = 892 sq ft / 82.8 sq m
For identification only - Not to scale



 Floor plan produced in accordance with RICS Property Measurement Standards incorporating International Property Measurement Standards (IPMS2 Residential). © nichecom 2024. Produced for Drewery. REF: 1180430

Drewery Property Consultants
128 Station Road
Sidcup
Kent
DA15 7AF

Contact
020 8269 6605
info@drewery.co.uk
www.drewery.co.uk

Agents Note: Whilst every care has been taken to prepare these particulars, they are for guidance purposes only. All measurements are approximate and are for general guidance purposes only and whilst every care has been taken to ensure their accuracy, they should not be relied upon and potential buyers/tenants are advised to recheck the measurements.