



the  
epsom

the  
bretton

## the epsom

3 bed semi detached

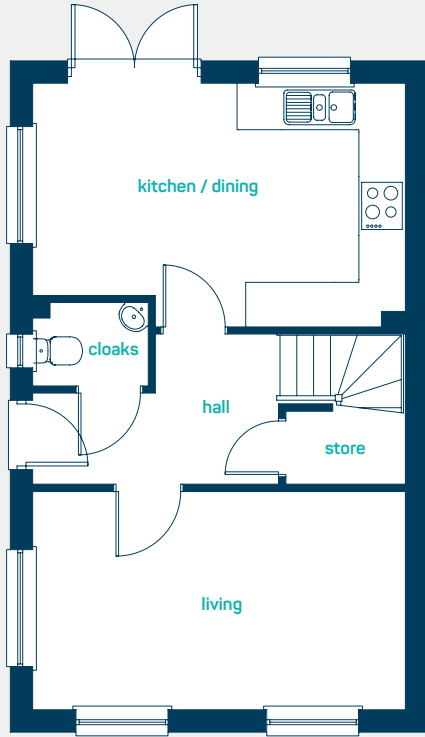
A *modern* 3 bed home, perfect for growing families. Key features include an open plan kitchen diner, separate living room, French doors leading to the garden and master bedroom with en-suite.

[www.anwylhomes.co.uk](http://www.anwylhomes.co.uk)

got  
questions?

call...  
**03300  
244 944**

*everything considered.*



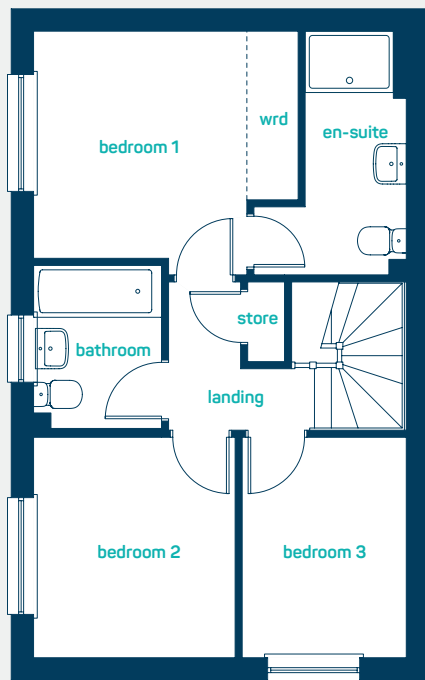
Ideal for  
growing  
families

**ANWYL**  
thoughtful homes

**ground floor**

kitchen/dining 16'5" x 10'9"  
living room 16'5" x 9'7"  
cloaks 5'1" x 3'9"

kitchen/dining 5.00m x 3.28m  
living room 5.00m x 2.91m  
cloaks 1.54m x 1.13m



**first floor**

bedroom 1 11'8" x 10'9"  
en-suite 10'9" x 6'8"  
bedroom 2 9'9" x 8'11"  
bedroom 3 9'9" x 7'3"  
bathroom 7'3" x 5'7"

bedroom 1 3.56m x 3.28m  
en-suite 3.28m x 2.04m  
bedroom 2 2.97m x 2.71m  
bedroom 3 2.97m x 2.20m  
bathroom 2.21m x 1.71m

get in  
touch...  
**03300  
244 944**

**the epsom**  
3 bed semi detached

[www.anwylhomes.co.uk](http://www.anwylhomes.co.uk)

This is a computer generated image of the epsom, elevation treatment may vary. Room sizes are approximate, dimensions are taken from the longest room point (please consult homes advisor for measurement points). Plots may be handed and any garages may be single or double. Kitchen and bathroom layouts are indicative. These plans are correct at the time of going to press, but may be subject to change during construction. Please ensure that you check for specific plot details. 09/12/19.

*everything considered.*