

39-41 High Street, Maidenhead, Berkshire SL6 1JF

Tel: 01628 674234 Fax: 01628 785432

Email: [property@braxtons.co.uk](mailto:property@braxtons.co.uk)

[braxtons.co.uk](http://braxtons.co.uk)



Residential Sales | Land & New Homes | Properties to Let | Landlords, Lettings and Management Services



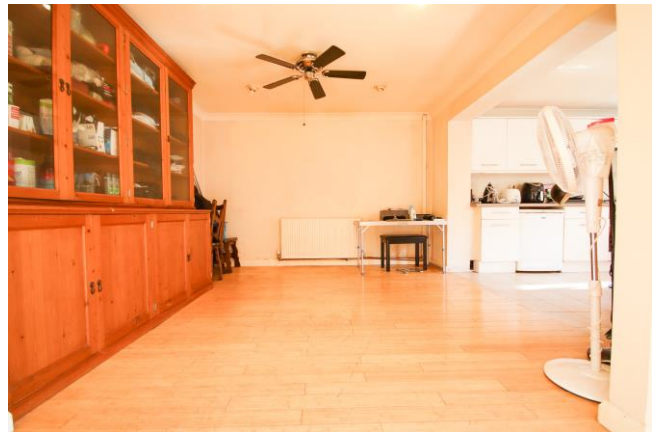
## GUIDE PRICE: £650 ,000 FREEHOLD

18 ST LUKES ROAD, MAIDENHEAD, BERKSHIRE, SL6 7AN

An opportunity to acquire this extended five-bedroom semi-detached family house which does now require modernisation/refurbishment but offers generous living accommodation, conveniently located for Kidwell's Park, the town centre and approx. 0.5 miles of the mainline railway station (Paddington/Elizabeth Line).

\*ENTRANCE HALL \*LIVING ROOM \*L-SHAPED KITCHEN/DINING/ FAMILY ROOM \*FIVE BEDROOMS \*TWO BATH/SHOWER ROOMS \*DELIGHTFUL ENCLOSED REAR GARDEN  
\*DRIVEWAY PARKING \*GARAGE \*EPC RATING D \*COUNCIL TAX BAND E

## ACCOMMODATION







For clarification we wish to inform prospective purchasers that we have prepared these sales particulars as a general guide. We have not carried out a detailed survey nor tested the services, appliances and specific fittings. Room sizes should not be relied upon for carpets, furnishings and appliances. Whilst these particulars are believed to be correct their accuracy is not guaranteed and are given without responsibility. They do not form part of any contract.

Approximate Gross Internal Area  
Ground Floor = 69.1 sq m / 744 sq ft  
First Floor = 66.1 sq m / 711 sq ft  
Garage = 12.4 sq m / 133 sq ft  
Total = 147.6 sq m / 1,588 sq ft



Illustration for identification purposes only,  
measurements are approximate, not to scale.  
© **©J Property Marketing** Produced for Braxton

