



Cwm Cottage Road, Abertillery, NP13 1AT

£265,000

Council Tax Band C



** NO CHAIN ** VIDEO TOUR ** EPC: C **

We are pleased to offer for sale this generously sized semi-detached property situated on Cwm Cottage Road, a desirable location within Abertillery. This property briefly comprises; entrance hallway, fitted kitchen with pantry room, two large reception rooms, open landing, three bedrooms, first floor bathroom, front and rear garden complete with outdoor toilet and garage providing off-road parking for one car.

Entrance

8'2" x 12'3" (2.52m x 3.76m)

Reception 1

12' x 14'7" (3.67m x 4.5m)

Reception 2

12'2" x 12'4" (3.72m x 3.79m)

Kitchen

8'6" x 8'9" (2.64m x 2.73m)

Bathroom

8'7" x 9' (2.68m x 2.77m)

Bedroom 1

12'1" x 12'5" (3.69m x 3.82m)

Bedroom 2

11'9" x 15'3" (3.65m x 4.68m)

Bedroom 3

8'3" x 8'3" (2.55m x 2.55m)

Tenure

We have been informed that this property is freehold, intending purchasers should make enquires with their solicitor

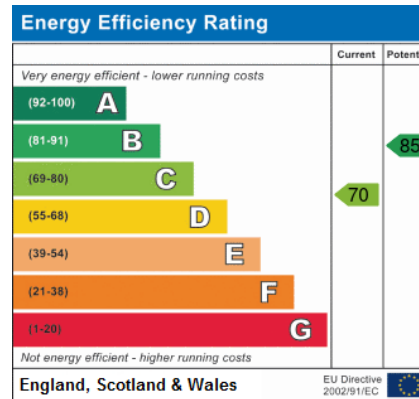
Services

Mains gas, electric, water and drainage

Council Tax

Band: C

EPC: C



Asset Estates Ltd

Abertillery

Call: 01495 211311

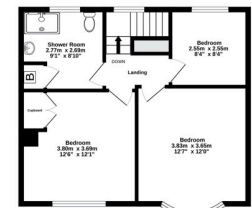
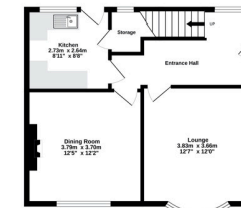
Web: www.assetestates.co.uk/

Email: info@assetestates.co.uk

No statement in these details should be relied upon as representation of fact. Any purchaser should instruct their own survey in order to ensure the accuracy of the information within. Asset Estates, their employees and agents do not have any authority to give warranty or representation in respect of this property. The services and equipment at the property have not been tested and we cannot comment on their condition or adequacy. Asset Estates make thorough inquiries of the vendor to ensure that the information that we provide is as accurate as possible. If you are aware of any details that are incorrect, please inform Asset Estates in order for us to make the necessary changes.

Ground Floor 47.2 sq.m. (508 sq.ft.) approx.

1st Floor 47.5 sq.m. (511 sq.ft.) approx.



Asset Estates
 TOTAL FLOOR AREA: 94.7 sq.m. (1023 sq.ft.) approx.
 We are not qualified to advise on the condition of the property or the accuracy of the information provided. We are not responsible for any errors or omissions in this information. This is not a contract. Please refer to the full particulars for more details. The information is provided for guidance only. It is not intended to be used as a basis for any decision. Please contact us for more information.