

# Compton

---

## London

Cannon Green Building  
EC4R 0AN

---

Impressive fully fitted out workspace  
with communal roof terrace and  
business lounge located a stones  
throw from Cannon Street station

---

## For Rent

6,325 ft<sup>2</sup>

020 7101 2020  
[compton.london](http://compton.london)

CANNON  
GREEN

# Compton

---

## London

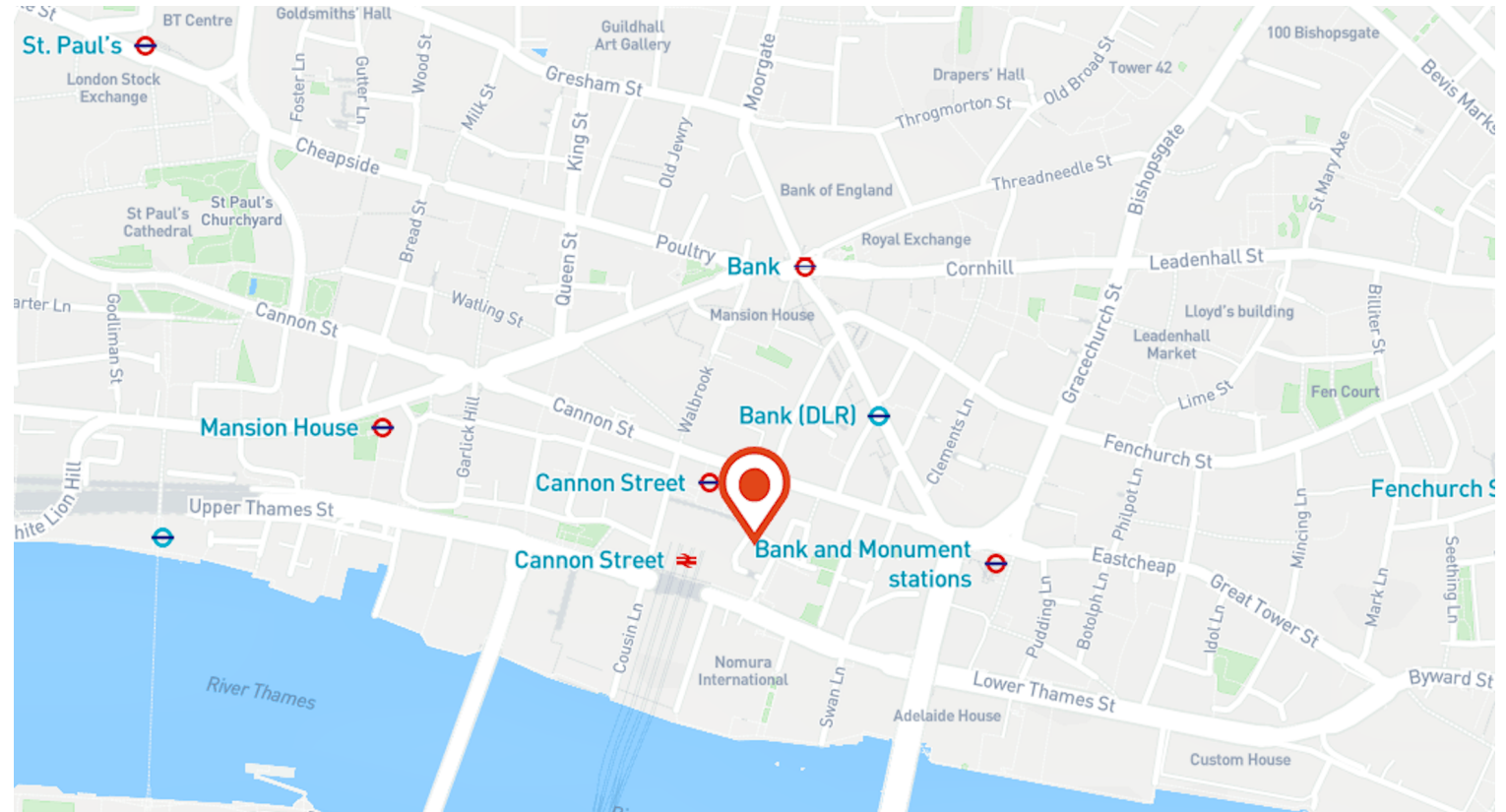
Cannon Green Building  
EC4R 0AN

---

Impressive fully fitted out workspace with communal roof terrace and business lounge located a stones throw from Cannon Street station

---

**For Rent**  
6,325 ft<sup>2</sup>



## Location

Cannon Green is located next door to Cannon Street station in the heart of the City of London.

The new entrance to Bank Station is just 2 minutes' walk away. London Bridge and Liverpool Street are also within easy reach.

The building is surrounded by an excellent choice of dining and retail options with Bloomberg Arcade, Bow Lane and One New Change all within a short walk.

# Compton

---

## London

Cannon Green Building  
EC4R 0AN

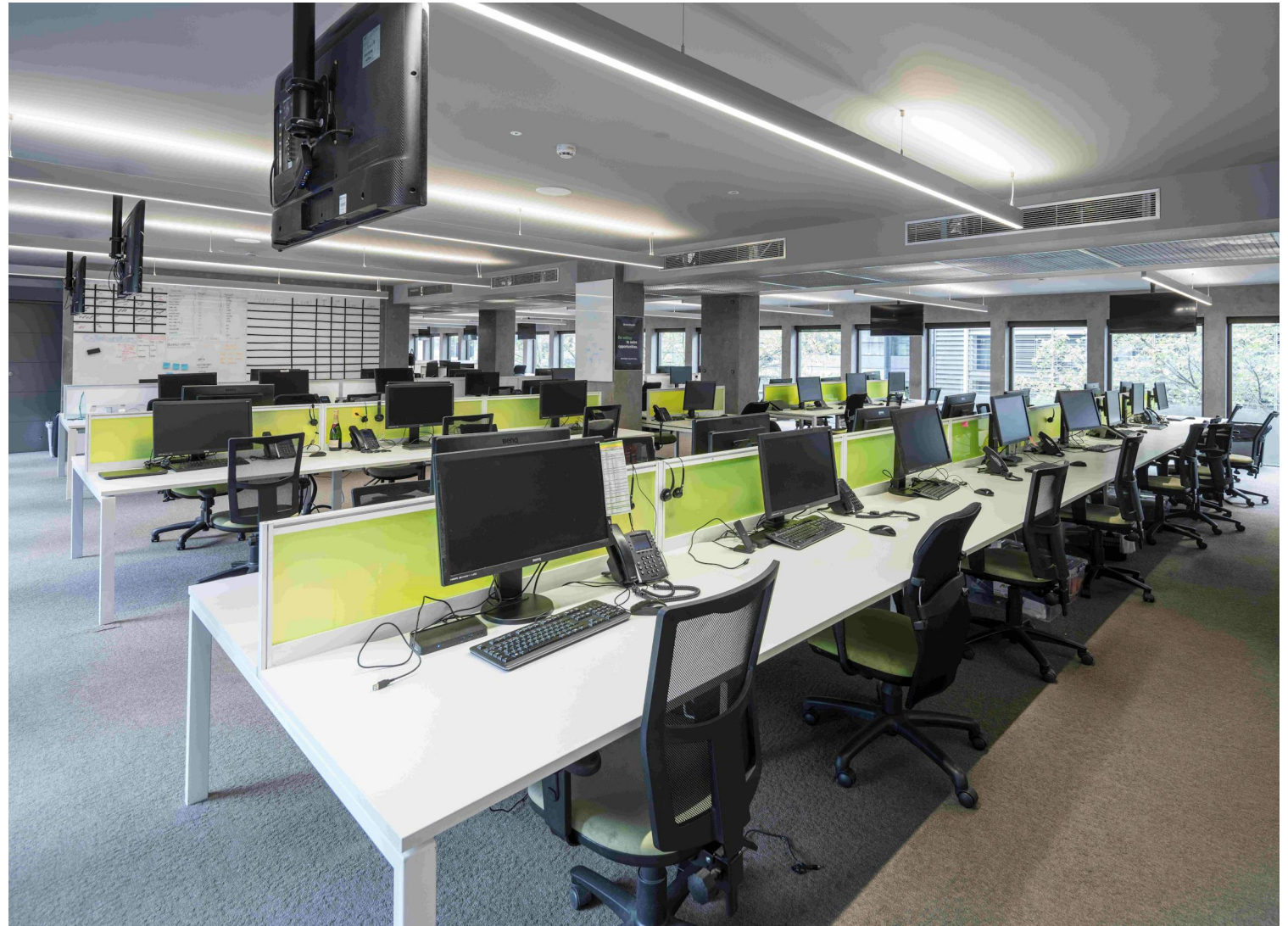
---

Impressive fully fitted out workspace with communal roof terrace and business lounge located a stones throw from Cannon Street station

---

**For Rent**  
6,325 ft<sup>2</sup>

---



# Compton

---

## London

Cannon Green Building  
EC4R 0AN

---

Impressive fully fitted out workspace with communal roof terrace and business lounge located a stones throw from Cannon Street station

---

**For Rent**  
6,325 ft<sup>2</sup>

---



# Compton

---

## London

Cannon Green Building  
EC4R 0AN

---

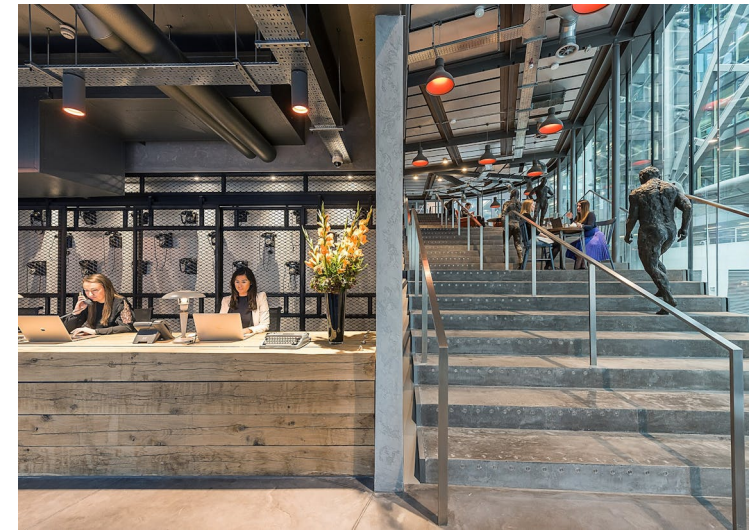
Impressive fully fitted out workspace with communal roof terrace and business lounge located a stones throw from Cannon Street station

---

## For Rent

6,325 ft<sup>2</sup>

---



# Compton

---

## London

Cannon Green Building  
EC4R 0AN

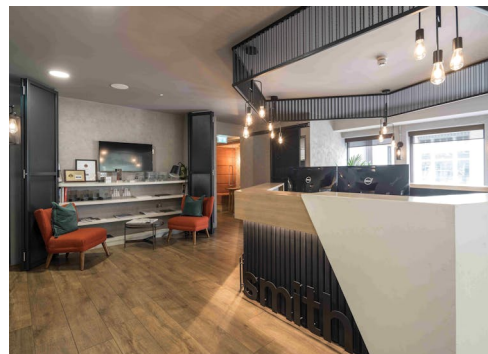
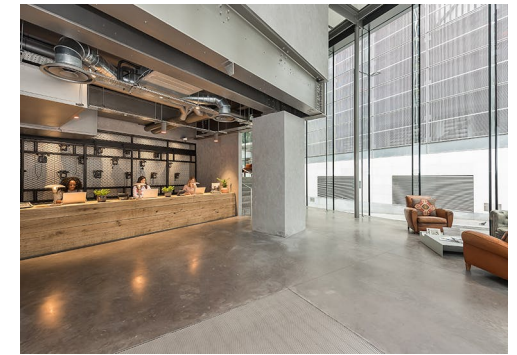
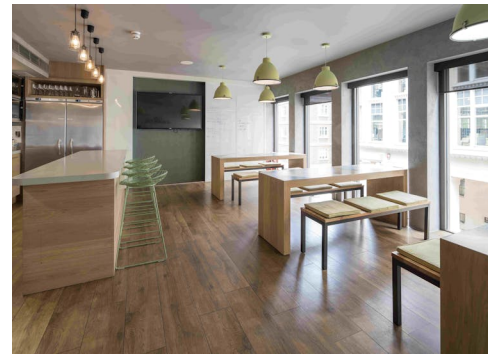
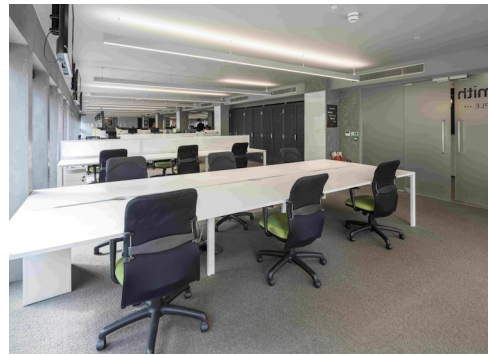
---

Impressive fully fitted out workspace  
with communal roof terrace and  
business lounge located a stones  
throw from Cannon Street station

---

**For Rent**  
6,325 ft<sup>2</sup>

---



# Compton

---

## London

Cannon Green Building  
EC4R 0AN

---

Impressive fully fitted out workspace with communal roof terrace and business lounge located a stones throw from Cannon Street station

---

## For Rent

6,325 ft<sup>2</sup>

---

## Amenities

- Quoting £65.00 per sq ft on a Sub-lease basis (rent passing £70 per sq ft)
- Fully fitted & furnished
- Communal roof terrace
- Business Lounge
- Sub-lease or assignment until June 2027 (outside the Act)
- Exposed concrete finishes
- Kitchenette
- Multiple meeting rooms
- Building commissionaire

---

## Description

This impressive workspace, located within a vibrant and creative building, is offered by way of sublease or assignment until June 2027. Alternatively, a surrender and regrant can be arranged directly with the Landlord.

The space is fully outfitted to support over 70 workstations and includes a modern kitchen, private phone booths, and multiple meeting rooms. Tenants also enjoy access to an array of outstanding amenities, including a communal rooftop terrace with sweeping views, a chic business lounge, and an on-site restaurant and bar. With secure cycle-in storage and showers, this workspace offers a seamless blend of productivity and lifestyle in a prime location.

# Compton

---

## London

Cannon Green Building  
EC4R 0AN

---

Impressive fully fitted out workspace with communal roof terrace and business lounge located a stones throw from Cannon Street station

---

## For Rent

6,325 ft<sup>2</sup>

---

## Content

View on Website



---

## Terms

Sub-lease or assignment until June 2027 (outside the Act).



# Compton

---

## London

Cannon Green Building  
EC4R 0AN

---

Impressive fully fitted out workspace with communal roof terrace and business lounge located a stones throw from Cannon Street station

---

## For Rent

6,325 ft<sup>2</sup>

---

## Floor Areas & Outgoings

---

The accommodation comprises the following areas:

Name	sq ft	Rent (sq ft)	Rates Payable	Service Charge (sq ft)	Total /sq ft	Total month	Total year	Availability
Unit - Part 2nd Floor	6,325	£65	£22.25	£11.92	£99.17	£52,270.85	£627,250.25	Available
Total	6,325	£65	£22.25	£11.92	£99.17	£52,270.85	£627,250.25	

# Compton

---

## Contact Us

All appointments to view must be arranged via sole agents, Compton, through —

Emma Higgins  
[eh@compton.london](mailto:eh@compton.london)  
07769 605 295

Shaun Simons  
[ss@compton.london](mailto:ss@compton.london)  
07788 423131

Josh Perlmutter  
[jp@compton.london](mailto:jp@compton.london)  
07814 699 096



020 7101 2020  
[compton.london](http://compton.london)

Compton gives notice that these particulars are set out as a general outline only for the guidance of intending Purchasers or Lessees and do not constitute any part of an offer or contract. Details are given without any responsibility and any intending Purchasers, Lessees or Third Party should not rely on them as statements or representations of fact, but must satisfy themselves by inspection or otherwise as to the correctness of each of them. No person employed or engaged by Compton has any authority to make any representation or warranty whatsoever in relation to this property. Compton is the licensed trading name of Compton RE Disposals Limited. Company registered in England & Wales no. Registered office: 47 St John's Square, Clerkenwell, London, EC1V 4JJ  
Generated on 05/11/2024