

Storage Unit 137, Mill Road, Great Yarmouth

£35,000 Freehold

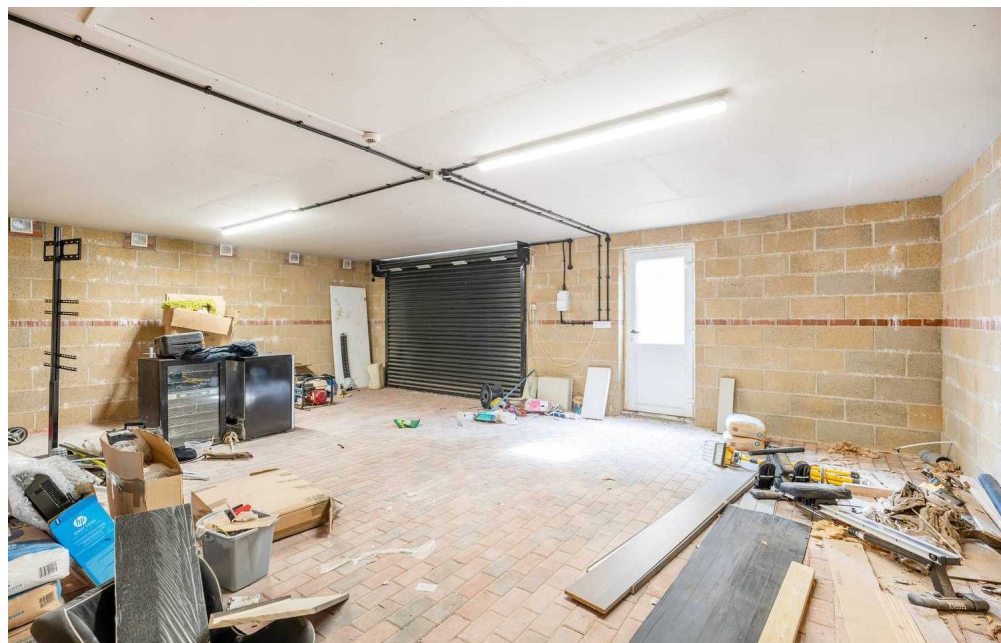
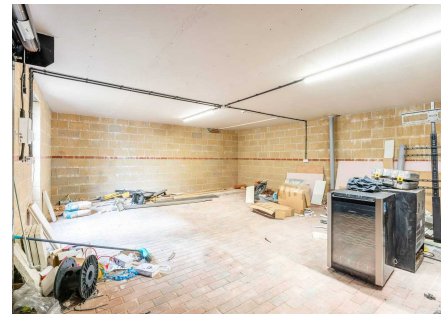
Presenting an opportunity to secure a storage unit in a highly desirable location. With its generous size, practical features, and prime setting in Great Yarmouth, this property is sure to appeal to businesses looking for a quality storage solution in a dynamic commercial setting. Don't miss out on the chance to make this your new storage facility.

Tenure: Freehold

Presenting an opportunity to secure a storage unit in a highly desirable location. With its generous size, practical features, and prime setting in Great Yarmouth, this property is sure to appeal to businesses looking for a quality storage solution in a dynamic commercial setting. Don't miss out on the chance to make this your new storage facility.

LOCATION

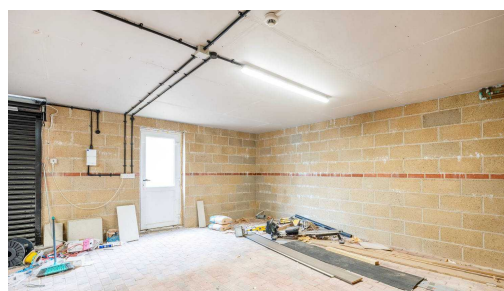
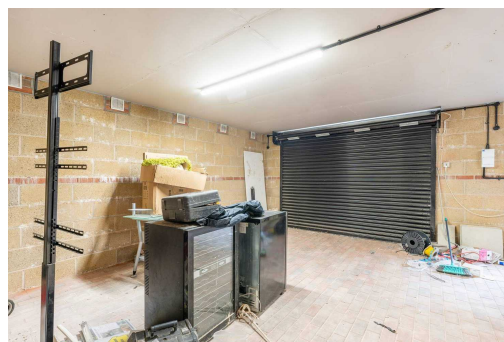
This home is located in the popular town of Great Yarmouth, the UK's third most desired seaside destination, also adjoining the highly sought-after Norfolk Broads. The town benefits from a wide range of local amenities and great leisure facilities including schooling, supermarkets, shopping centres, pubs, restaurants, bars, cinemas, swimming pools and theme parks. The town has its train and stations with fantastic transport links into the Cathedral City of Norwich (approx. 30 min drive). The area has been enhanced in recent years by a steady programme of road improvements which have provided a vastly improved road link to London, the industrial centres of the Midlands and the North. A new deep-water outer harbour



Presenting an opportunity to secure a storage unit in a highly desirable location. With its generous size, practical features, and prime setting in Great Yarmouth, this property is sure to appeal to businesses looking for a quality storage solution in a dynamic commercial setting. Don't miss out on the chance to make this your new storage facility.

LOCATION

This home is located in the popular town of Great Yarmouth, the UK's third most desired seaside destination, also adjoining the highly sought-after Norfolk Broads. The town benefits



Presenting an opportunity to secure a storage unit in a highly desirable location. With its generous size, practical features, and prime setting in Great Yarmouth, this property is sure to appeal to businesses looking for a quality storage solution in a dynamic commercial setting. Don't miss out on the chance to make this your new storage facility.

LOCATION

This home is located in the popular town of Great Yarmouth, the UK's third most desired seaside destination, also adjoining the highly sought-after Norfolk Broads. The town benefits from a wide range of local amenities and great leisure facilities including schooling, supermarkets, shopping centres, pubs, restaurants, bars, cinemas, swimming pools and theme parks. The town has its train and stations with fantastic transport links into the Cathedral City of Norwich (approx. 30 min drive). The area has been enhanced in recent years by a steady programme of road improvements which have provided a vastly improved road link to London, the industrial centres of the Midlands and the North. A new deep-water outer harbour is now in operation.

STORAGE UNIT

Spanning a generous size, this commercial storage unit offers ample space to accommodate a variety of storage needs, making it an ideal choice for businesses looking to expand their storage capacity. The property comes complete with a convenient wooden storage shed, providing additional storage options to suit various requirements.

Whether you are looking to store inventory, equipment, or other commercial goods, this warehouse provides a secure and versatile space to meet your storage needs. Ideal for a range of businesses such as logistics, manufacturing, or distribution, this property offers a flexible solution to support your operational requirements.

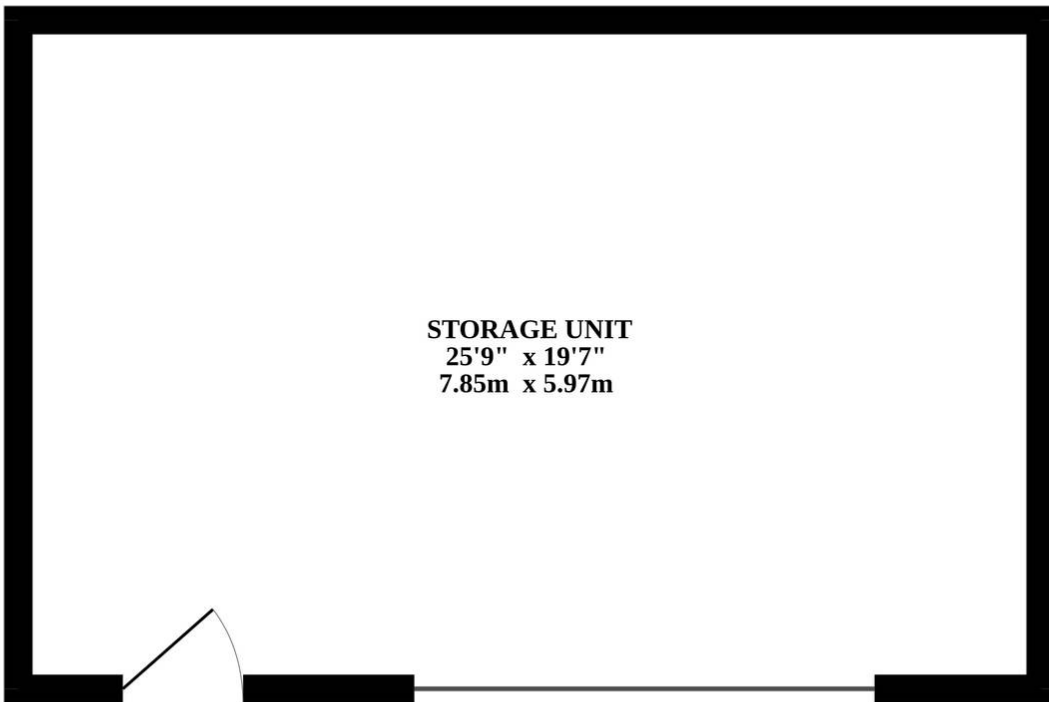
AGENTS NOTES

We understand that this storage unit is leasehold.

Connected to mains water and electricity.

Please call our Caister office for further details.





Whilst every attempt has been made to ensure the accuracy of the floorplan contained here, measurements of doors, windows, rooms and any other items are approximate and no responsibility is taken for any error, omission or mis-statement. This plan is for illustrative purposes only and should be used as such by any prospective purchaser. The services, systems and appliances shown have not been tested and no guarantee as to their operability or efficiency can be given.
Made with Metropix ©2024

You can include any text here. The text can be modified upon generating your brochure.

You can include any text here. The text can be modified upon generating your brochure.

