

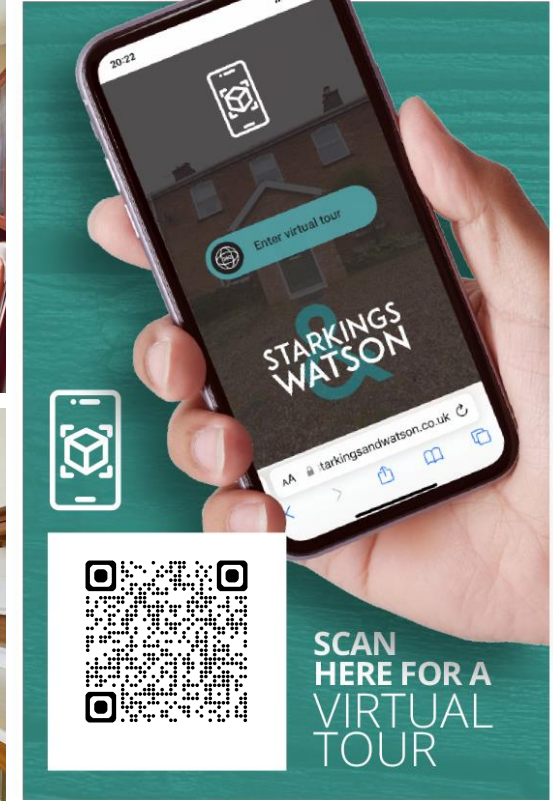
BEECH TREE WAY

Earsham, Bungay NR35 2ST

Freehold | Energy Efficiency Rating : E

To arrange an accompanied viewing please pop in or call us on 01986 490590

FOR SALE  
PROPERTY



For our full list of available properties, or for a FREE INSTANT online valuation visit

[starkingsandwatson.co.uk](http://starkingsandwatson.co.uk)



STARKINGS  
&  
WATSON

- No Onward Chain!
- Detached Bungalow
- Private, Tucked Away Village Location
- Generous Footprint Over 1700 SQFT (stms)
- Three Double Bedrooms
- Three Reception Spaces
- Wrap Around Gardens
- Two Garages & Large Driveway

### IN SUMMARY

NO CHAIN! The bungalow is situated at the end of SMALL CUL-DE-SAC with a LARGE and IMPRESSIVE FRONTAGE providing plenty of DRIVEWAY PARKING. The bungalow itself offers a VERY GENEROUS and FLEXIBLE footprint extending to approximately 1700 SQFT (stms) including the attached garages. Internally you will find a utility space and extended garden room, kitchen, sitting/dining room, conservatory, front entrance porch, THREE ample BEDROOMS, w/c and FAMILY BATHROOM. Externally you will find MATURE and PRIVATE rear gardens with plenty of scope for keen gardeners as well as TWO SEPARATE attached GARAGES. The bungalow due to its size offers purchasers with an exciting proposition to remodel and renovate if required but could certainly be moved straight into and is offered with no onward chain.

### SETTING THE SCENE

The property is approached via a small cul de sac at the very end with no passing traffic. There is an impressive hard standing driveway providing lots of

off road parking as well as access to two separate single garages.

### THE GRAND TOUR

To the front you will find two main entrance doors both leading into the property. The first one to the far right hand side takes you into a utility/lobby with plenty of space for coats and shoes as well as fitted storage units, work tops over and space for white goods. This space leads into an extended garden room with ample space for seating and door leading to the rear garden. Also, from the utility space you will find the door leading into the kitchen which comprises of a range of kitchen units with rolled edge work tops over, breakfast bar area, space for freestanding oven and further white goods. From the kitchen you will find access to the central hallway which also provides a front porch entrance which is the alternative entrance to the front of the bungalow. Accessed off the central hallway you will first find the impressive sitting room which has a space for dining as well. There is also a feature fireplace and sliding doors leading to a rear conservatory providing another reception space with access onto the rear garden. Also accessed off the central hallway you will find fitted storage cupboards as well as two ample bedrooms overlooking the rear garden with the larger one benefiting from fitted wardrobes. There is then a separate wc and refitted bathroom which offers a separate bath and shower. The final room completing the bungalow is the largest double bedroom found at the end of the corridor which provides plenty of space for freestanding wardrobes.



To arrange an accompanied viewing please call our Bungay Office on **01986 490590**



### THE GREAT OUTDOORS

The private rear garden is a generous space with timber fencing enclosing as well as mature trees, shrubs and hedging surrounding. The garden is mostly laid to lawn with a couple of planting bed borders as well as side access leading to the front on both sides. To one side there is another small secret area of garden.

### OUT & ABOUT

The property is situated within the village of Earsham, next to the quaint market town of Bungay. Within walking distance to the town centre, an extensive range of amenities including doctors, schooling, dentist, opticians, shops and restaurants. The City of Norwich to the North is about a 30 min drive away with a mainline train link to London Liverpool Street. The market town of Diss is about 19 miles away and provides further amenities and also benefits from a mainline link to London.

### FIND US

Postcode : NR35 2ST

What3Words : ///traders.spray.conspired

### VIRTUAL TOUR

View our virtual tour for a full 360 degree of the interior of the property.

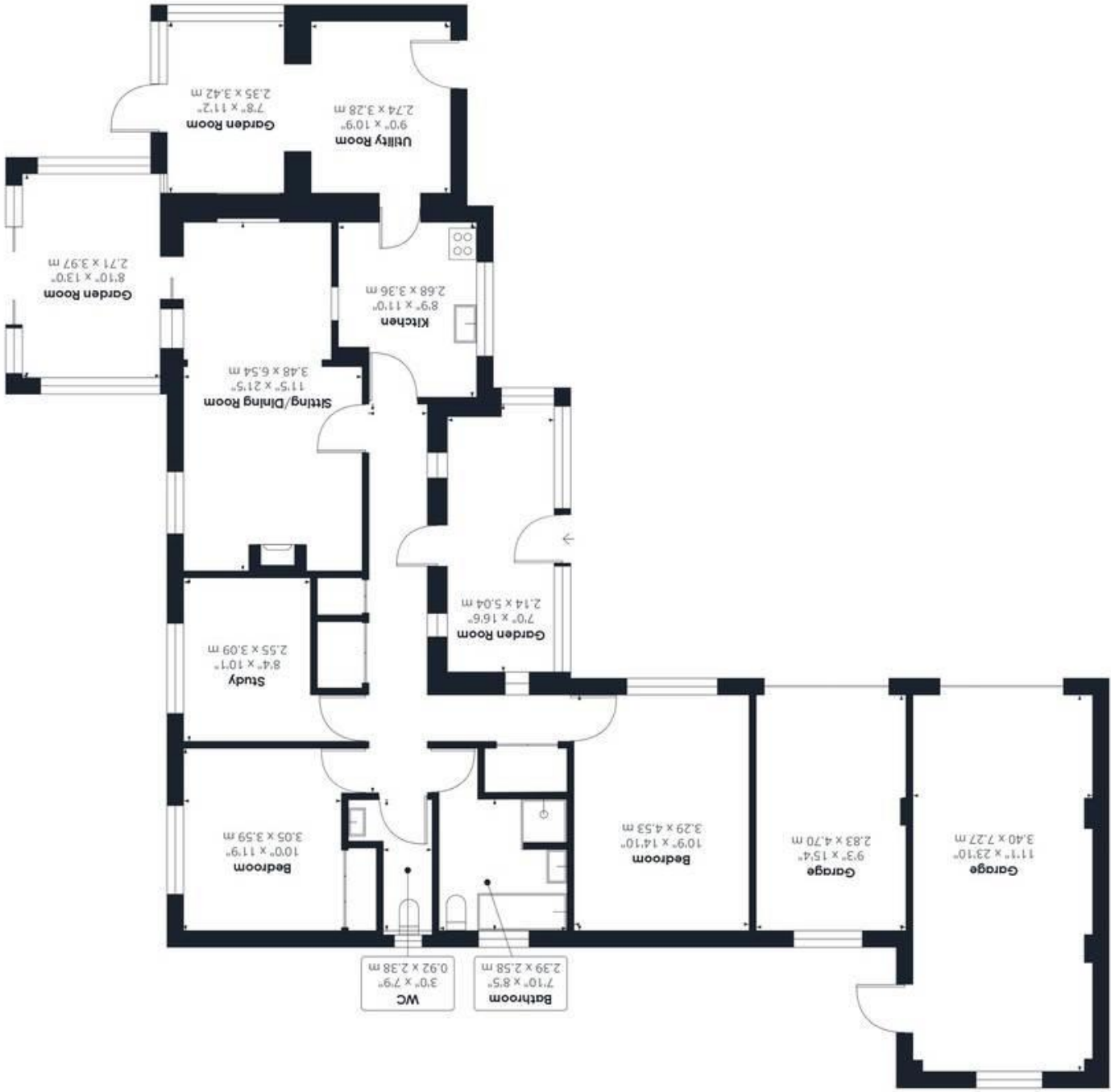
**Disclaimer:** Whilst every care has been taken to prepare these sales particulars, they are for guidance purposes only. All measurements are approximate are for general guidance purposes only and whilst every care has been taken to ensure their accuracy, they should not be relied upon and potential buyers are advised to recheck the measurements.

Price:



For our full list of available properties, or for a FREE INSTANT online valuation visit

[starkingsandwatson.co.uk](https://starkingsandwatson.co.uk)



GIRAFFE 360

standard.

Calculations are based on RICS IPMS 3C

While every attempt has been made to ensure accuracy, all measurements are approximate, not to scale. This floor plan is for illustrative purposes only.

(1) Excluding balconies and terraces

Approximate total area<sup>m</sup>

1784.33 ft<sup>2</sup>

165.77 m<sup>2</sup>

