



Apt 10, One St Brelade, La Route De Genets, St Brelade
£3,500,000

BROADLANDS
FINDING YOU A HOME SINCE 1972

Apt 10, One St Brelade, La Route De Genets

St Brelade, Jersey

- Jersey's most prestigious, luxury apartments
- Finished to the highest possible specification
- Luxury high spec kitchens, with integrated Miele appliances
- Remote access, air comfort cooling and heating throughout
- Automated blinds in bedroom suites and reception rooms, fully triple glazed
- Secure underground parking by number plate recognition
- Concierge and caretaker service plus top security and CCTV coverage
- A wealth of luxury amenities, state of the art gym, wellness centre and meeting room
- Highly sought-after location with astounding views over St Brelade's bay
- Private terraces and beautiful communal gardens



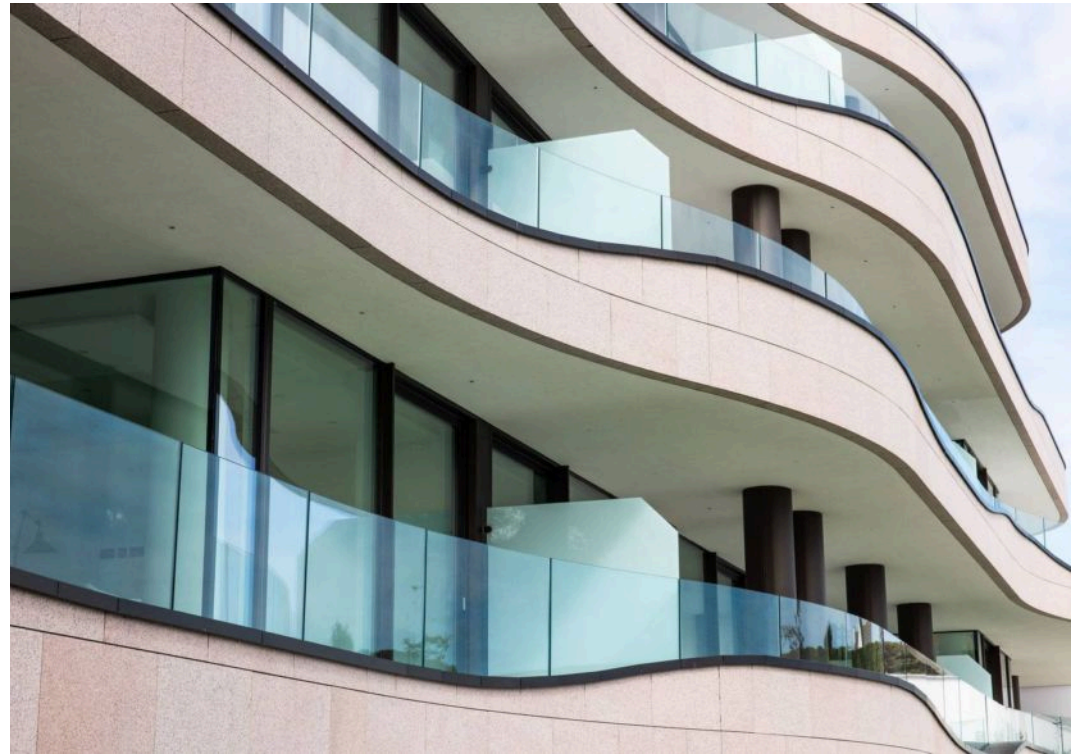
Apt 10, One St Brelade, La Route De Genets

St Brelade, Jersey

A stunning garden level apartment in this truly exceptional new build development. Each apartment offers an open plan living space including a high specification kitchen with integrated Miele appliances and Quartz worktops. This apartment benefits from a large private terrace and it's private garden with breath-taking views across the bay. The apartment has two large double bedroom suites with automated blinds and in-ceiling flush speakers, spacious open plan living room/kitchen/dining space, a separate utility and a cinema room. Each apartment benefits from it's own private double garage ,access to the state-of-the-art gym and wellness room as well as a concierge service. The location is much sought after, with numerous award winning restaurants nearby, plus local amenities including Waitrose and M&S at Red Houses. Estimated completion is due in 2022-off plan reservations are now being taken, to secure one of these magnificent apartments.

Property Overview -







Broadlands

Broadlands Estates, Library Place - JE2 3NL

01534 880770 • enquiries@broadlandsjersey.com • www.broadlandsjersey.com/

BROADLANDS

FINDING YOU A HOME SINCE 1972