



8 Leaffield Drive, Worsley

In Excess of £360,000

8 Leaffield Drive

Worsley, Manchester

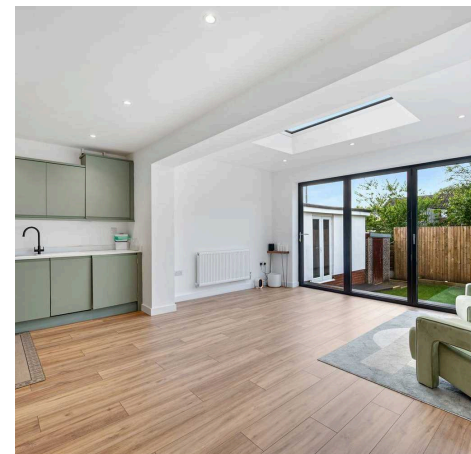
Millbrooke Estate Agents are delighted to offer for sale this beautifully presented, recently renovated freehold semi-detached property, ideally situated in a much sought-after area of Boothstown Council Tax band: C

Tenure: Freehold

EPC Energy Efficiency Rating: C

EPC Environmental Impact Rating: C

- Freehold Property
- No Onward Chain!
- Popular Boothstown Location
- Beautifully Presented Throughout
- Many Local Amenities and Transport Links
- Extended Semi-Detached
- Private Rear Garden
- Driveway and Garage
- Gas CH (combi) and Double Glazing Throughout



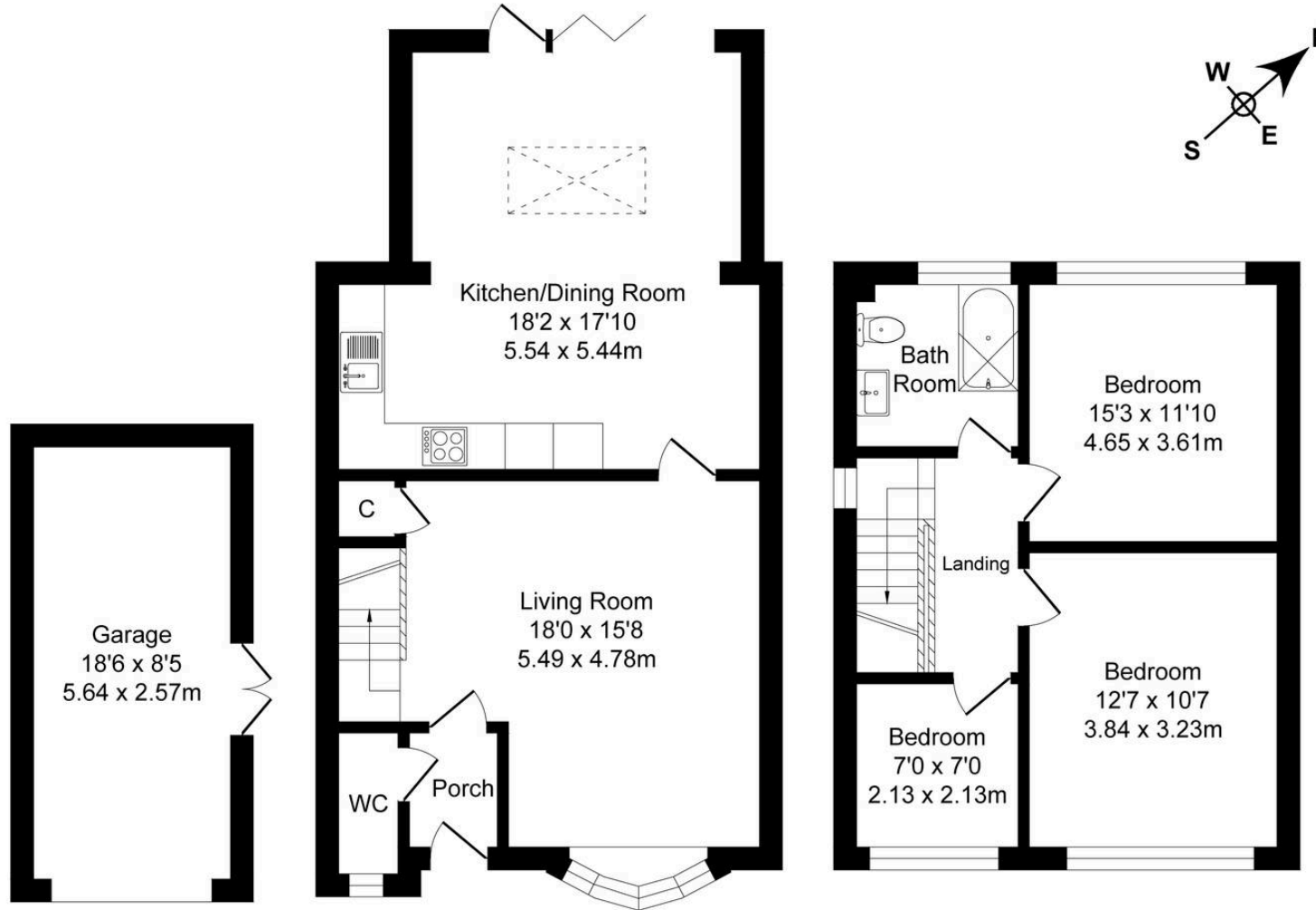




Leafield Drive, Worsley

Total Approx. Floor Area 1173 Sq.ft. (108.9 Sq.M.)

Surveyed and drawn by Lens Media for illustrative purposes only. Not to scale. Whilst every attempt was made to ensure the accuracy of the floor plan, all measurements are approximate and no responsibility is taken for any error.



Garage

Approx. Floor Area 155 Sq.Ft (14.4 Sq.M.)

Ground Floor

Approx. Floor Area 583 Sq.Ft (54.2 Sq.M.)

First Floor

Approx. Floor Area 434 Sq.Ft (40.3 Sq.M.)



Millbrooke Estate Agents

271 Mosley Common Road, Worsley, Manchester - M28 1BZ

0161 790 5154 • hello@millbrooke.co • millbrooke.co

