



Bartlams.

17 Tasman Grove, Perton WV6 7SF

£245,000



17 Tasman Grove

Wolverhampton, Wolverhampton

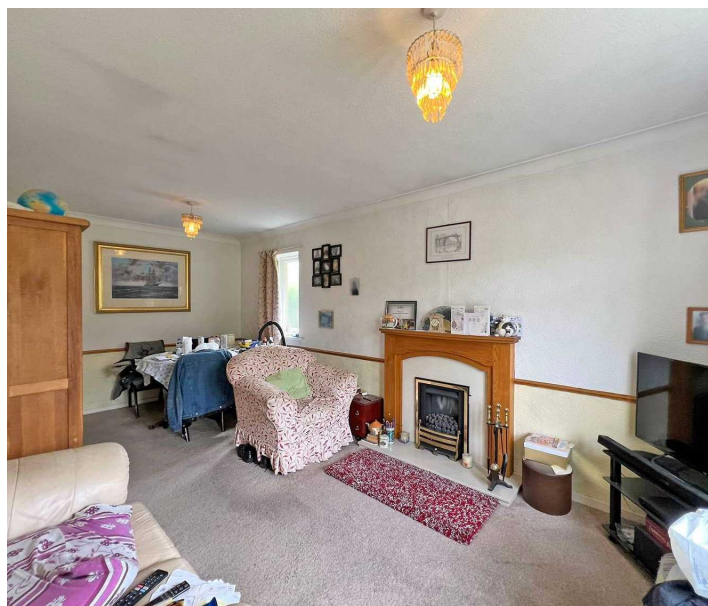
Charming Two-Bedroom Detached Bungalow with No Upward Chain

Nestled in a cul-de-sac position in Perton Village, this property offers a peaceful location while being conveniently close to local amenities.

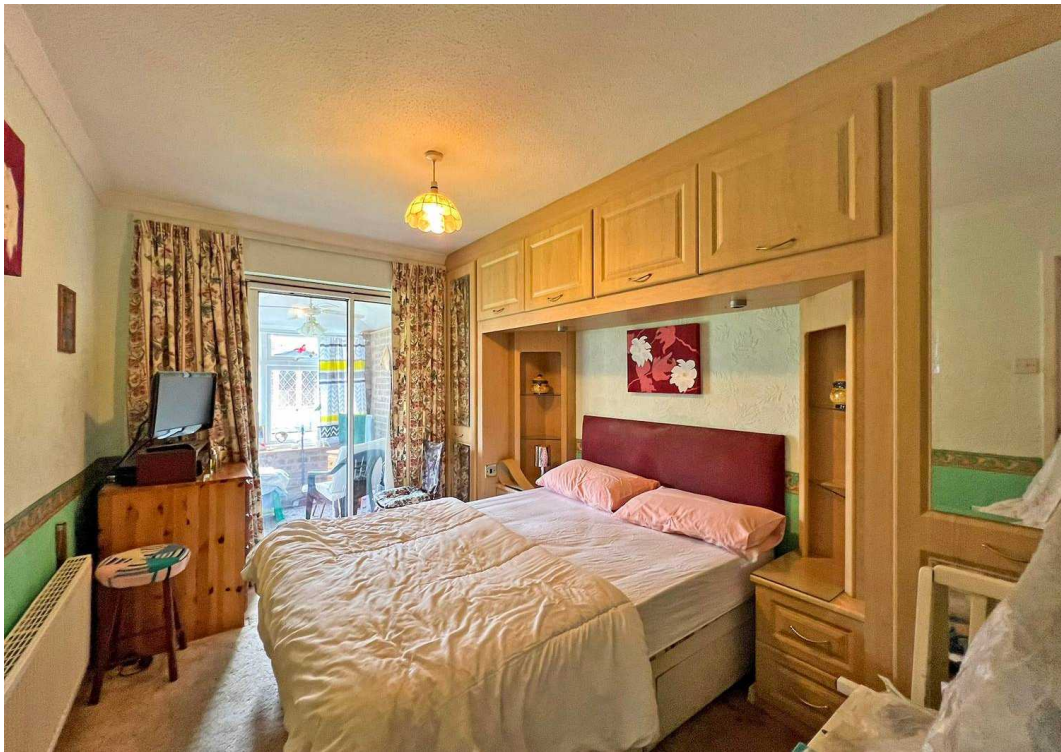
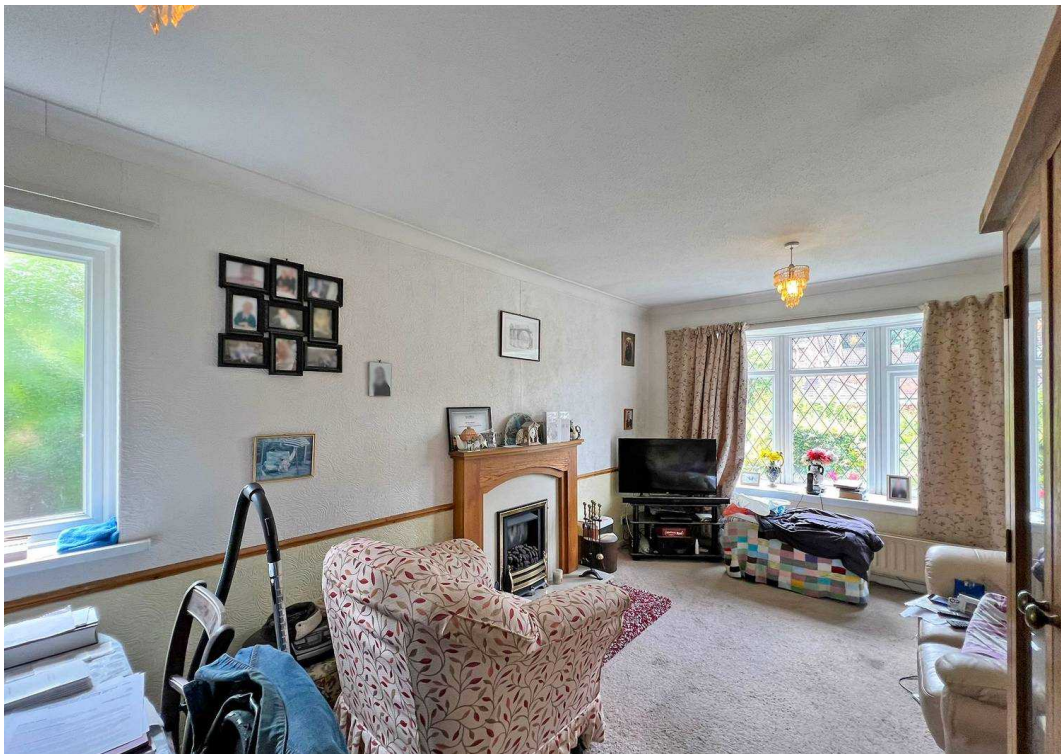
The property features a porch and entrance hall, generously sized lounge/diner. Fitted kitchen provides ample space for cooking and storage. The bungalow includes two spacious double bedrooms, a rear conservatory and fitted bathroom. Off-road parking to the front and side with access to the garage. Beautiful lawn gardens at both the front and rear of the property offer plenty of outdoor space for leisure and gardening activities.

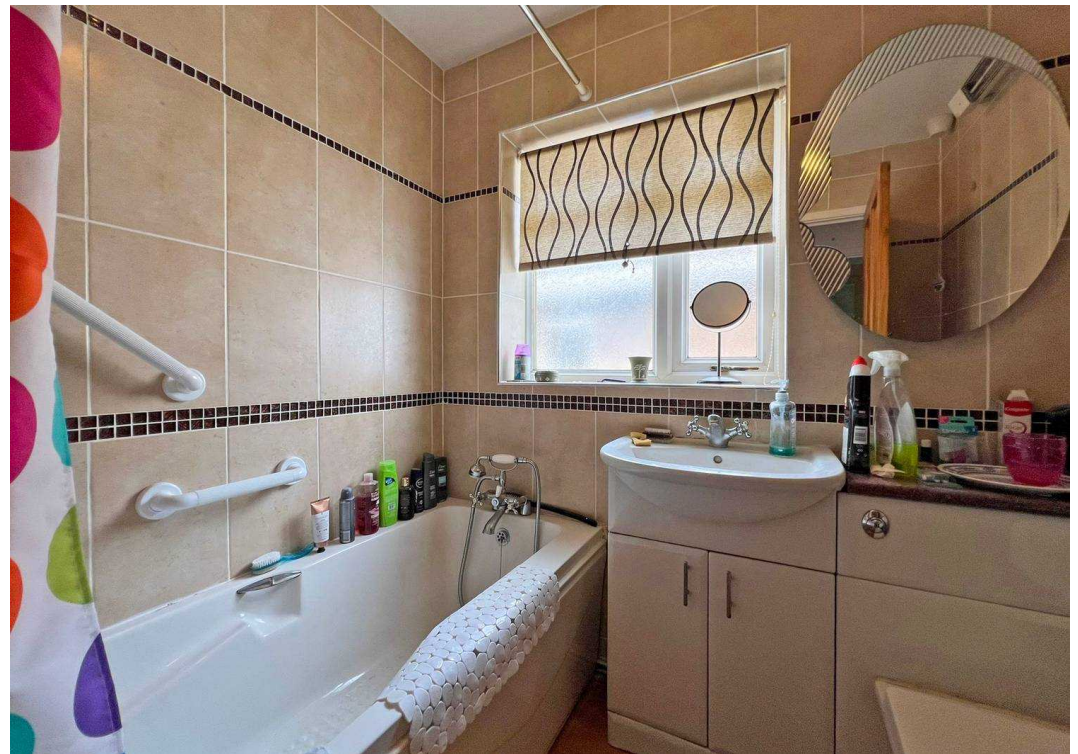
This bungalow is an ideal choice for those seeking a peaceful living environment without sacrificing proximity to essential services and amenities. Don't miss out on this excellent opportunity! Contact our local team today to arrange your viewing appointment.

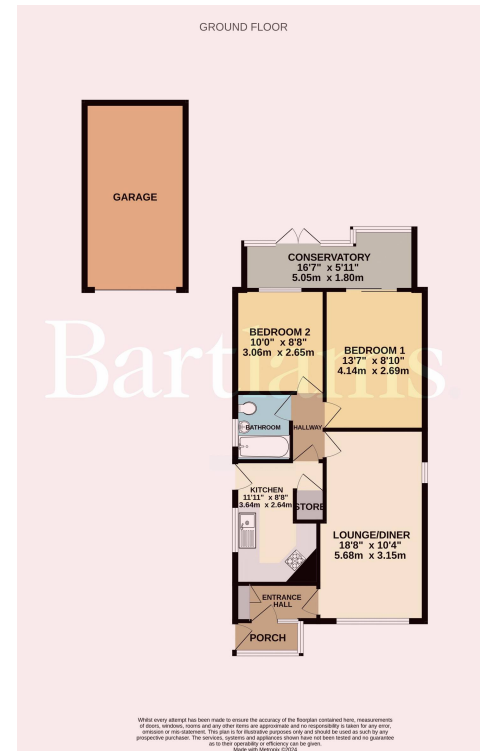
Freehold. Council tax band - C. EPC - tbc



B.









Bartlams Tettenhall

Bartlams, 24 High Street - WV6 8QT

01902 759888

tettenhallsales@bartlams.co.uk

www.bartlams.co.uk

NOTICE: These particulars, although believed to be correct, do not constitute any part of an offer or contract. All statements contained in these particulars as to this property are made without responsibility and are not to be relied upon as statements or representations of warranty whatsoever in relation to property. Any intending purchaser must satisfy themselves by inspection or otherwise as to the correctness each of the statements contained in these particulars. All measurements are approximate and for illustrative purposes only. Photographs are produced for general information and it must not be inferred that any item shown is included in the sale. DISCLOSURE: As a professional Estate Agency our clients employ us to look after their best interests. This includes providing them with full details of offers made to purchase their property. To ensure our obligations to our clients are met we need to check the status of all potential purchasers. If you make an offer on this property we will ask a member of The Finance Family to contact you to verify your status. They are a leading firm of Independent Financial Advisers and Mortgage Brokers. Should they transact any business resulting from our introduction then we may receive a commission.

