



Bartlams.

215 Warstones Drive, Wolverhampton - WV4 4NQ
£229,950



215 Warstones Drive

Penn, Wolverhampton

****NO UPWARD CHAIN**** Generously sized three-bedroom semi-detached house occupying an established residential position off Warstones Road. Convenient for local schools, public transport, and local shopping, with easy access to the city centre. The interior layout notably includes: an entrance porch; a hall with a convenient WC and washbasin; an open-plan lounge/diner with French doors leading to the rear garden; a stylishly fitted kitchen with a sink and drainer, gas hob, integrated oven and microwave, and space for a washing machine and fridge freezer; a secondary hall to the side leading to the rear garden, also benefiting from another WC and storage area; three generously proportioned bedrooms, two of which face the rear garden and offer plenty of storage space; a family shower room with a large walk-in shower, WC, and washbasin; a large private driveway to the front; and a rear garden with an extensive lawn and patio space to enjoy.

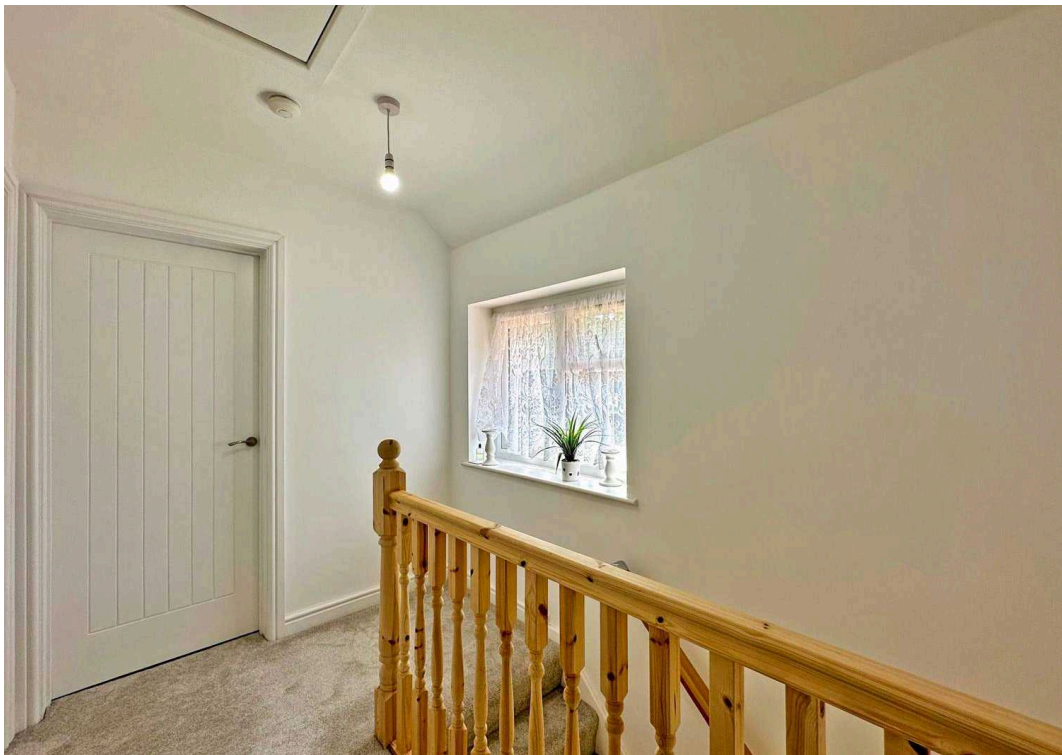
Call our local Wombourne Office to view this spectacular home!

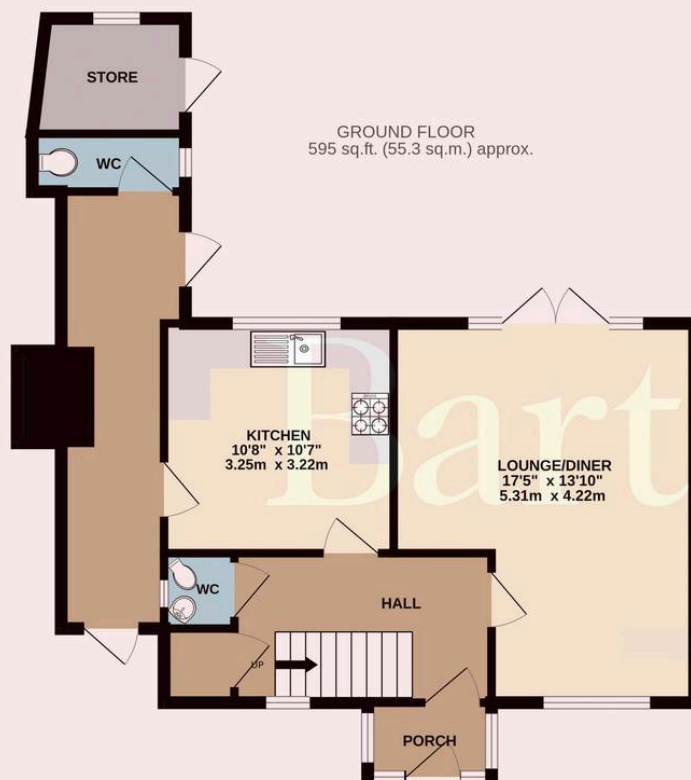
We are advised by our client that this property is;
Freehold, Council Tax Band - B, EPC - C



B.







TOTAL FLOOR AREA : 1002 sq.ft. (93.1 sq.m.) approx.

Whilst every attempt has been made to ensure the accuracy of the floorplan contained here, measurements of doors, windows, rooms and any other items are approximate and no responsibility is taken for any error, omission or mis-statement. This plan is for illustrative purposes only and should be used as such by any prospective purchaser. The services, systems and appliances shown have not been tested and no guarantee as to their operability or efficiency can be given.

Made with Metropix ©2024

Bartlams

Bartlams Ltd, The House On The Green High Street - WV5 9DP

01902 894141

wombourne@bartlams.co.uk

www.bartlams.co.uk

NOTICE: These particulars, although believed to be correct, do not constitute any part of an offer or contract. All statements contained in these particulars as to this property are made without responsibility and are not to be relied upon as statements or representations of warranty whatsoever in relation to property. Any intending purchaser must satisfy themselves by inspection or otherwise as to the correctness each of the statements contained in these particulars. All measurements are approximate and for illustrative purposes only.

Photographs are produced for general information and it must not be inferred that any item shown is included in the sale. DISCLOSURE: As a professional Estate Agency our clients employ us to look after their best interests. This includes providing them with full details of offers made to purchase their property. To ensure our obligations to our clients are met we need to check the status of all potential purchasers. If you make an offer on this property we will ask a member of The Finance Family to contact you to verify your status. They are a leading firm of Independent Financial Advisers and Mortgage Brokers. Should they transact any business resulting from our introduction then we may receive a commission.

