



Bartlams.

9 The Pines, FINCHFIELD WV3 9HD

£325,000



9 The Pines

Wolverhampton, Wolverhampton

Modern-style link-detached bungalow in very pleasant cul-de-sac setting within highly favoured neighbourhood with excellent local amenities.

Nicely presented accommodation offering a comfortably proportioned layout with a good standard of appointment. 18ft Living Room with feature fireplace. Well fitted Kitchen including integrated appliances. Versatile Dining Room. Two Bedrooms, both benefitting a range of fitted Sharps wardrobes. Bathroom including walk-in shower, WC and wash hand basin. Gas-fired central heating. Double glazing. Carport and driveway parking. Neatly landscaped gardens to the front and rear.

Call our local Tettenhall Office to book your viewing for this spectacular two-bedroom detached bungalow.

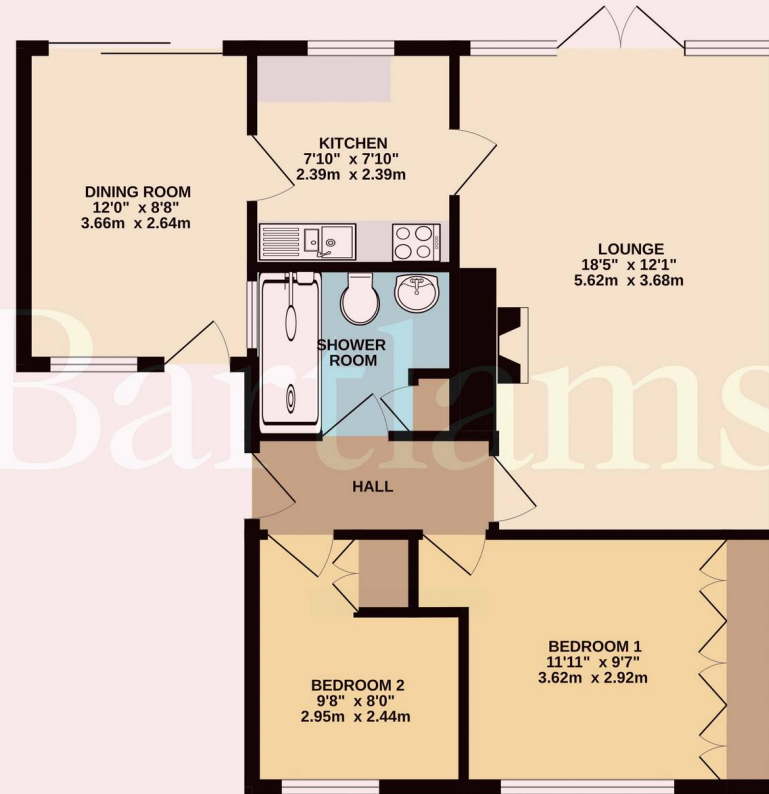
- TWO BEDROOM LINK-DETACHED BUNGALOW
- OFF ROAD PARKING
- TWO RECEPTION ROOMS
- IMMACULATELY MAINTAINED REAR GARDEN
- HIGHLY SOUGHT AFTER CUL-DE-SAC LOCATION
- SHORT WALK TO A RANGE OF AMENITIES
- TRANSPORT LINKS NEARBY
- FREEHOLD. COUNCIL TAX BAND - D. EPC - D.

B.





GROUND FLOOR
651 sq.ft. (60.5 sq.m.) approx.



TOTAL FLOOR AREA: 651 sq.ft. (60.5 sq.m.) approx.
Whilst every attempt has been made to ensure the accuracy of the floorplan contained here, measurements of doors, windows, rooms and any other items are approximate, and no responsibility is taken for any error, omission or mis-statement. This plan is for illustrative purposes only and should be used as such by any prospective purchaser. The services, systems and appliances shown have not been tested and no guarantee as to their operability or efficiency can be given.
Made with Metropix CS224

Bartlams Tettenhall

Bartlams, 24 High Street - WV6 8QT

01902 759888

tettenhallsales@bartlams.co.uk

www.bartlams.co.uk/

NOTICE: These particulars, although believed to be correct, do not constitute any part of an offer or contract. All statements contained in these particulars as to this property are made without responsibility and are not to be relied upon as statements or representations of warranty whatsoever in relation to property. Any intending purchaser must satisfy themselves by inspection or otherwise as to the correctness each of the statements contained in these particulars. All measurements are approximate and for illustrative purposes only. Photographs are produced for general information and it must not be inferred that any item shown is included in the sale.

DISCLOSURE: As a professional Estate Agency our clients employ us to look after their best interests. This includes providing them with full details of offers made to purchase their property. To ensure our obligations to our clients are met we need to check the status of all potential purchasers. If you make an offer on this property we will ask a member of The Finance Family to contact you to verify your status. They are a leading firm of Independent Financial Advisers and Mortgage Brokers. Should they transact any business resulting from our introduction then we may receive a commission.

