

Eccles Fold, Eccles

Manchester



In Excess of £110,000

Eccles Fold

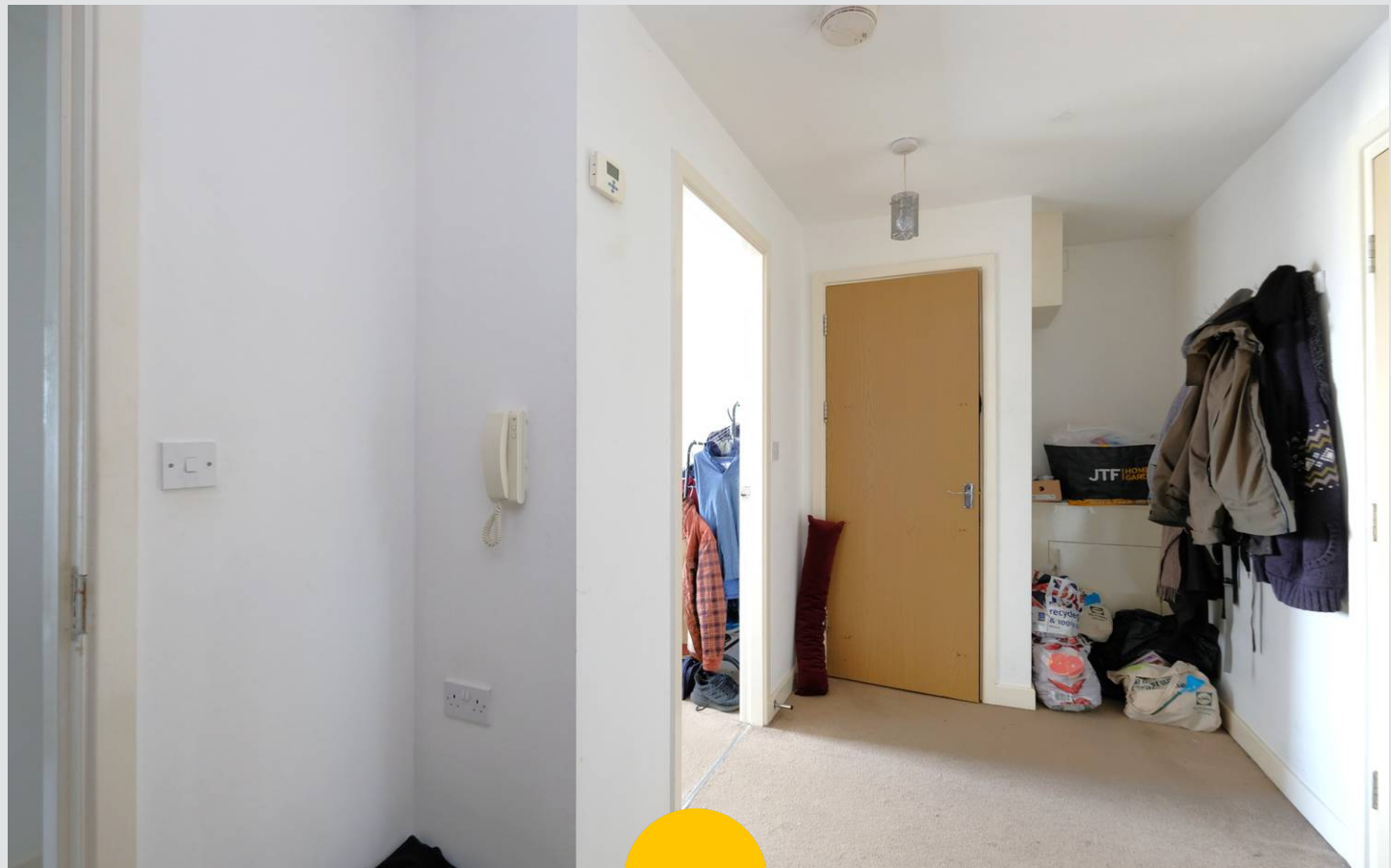
Eccles, Manchester

Spacious one bed apartment on the second floor within a popular apartment block. Ideal for professionals or investors seeking over 8% yield. Open plan living with Juliet balcony. Modern features, underfloor heating, double glazing. Well-maintained communal gardens. Prime location near amenities, transport links, Monton Village.

Council Tax band: A

Tenure: Leasehold

- One Bedroom Apartment
- Located on the Second Floor Within a Popular Apartment Block
- Open Plan Kitchen, Living & Dining Space with a Juliet Balcony
- Spacious Double Bedroom
- Three Piece Fitted Bathroom Suite
- Fully Electric & Double Glazed Throughout
- Underfloor Heated Throughout
- Well Kept Communal Areas and Gardens
- Excellently Located Close to Many Local Amenities, Transport Links & Just a Short Walk to Monton Village
- Street Parking



Entrance Hallway

Featuring two ceiling light points, power point, storage cupboard. Complete with a hard wood door. Fitted with carpet flooring.

Kitchen/lounge/diner

15' 8" x 14' 9" (4.78m x 4.50m)

Complete with electric hob, extractor, electric under oven, stainless steel sink, patio doors, underfloor heating throughout, space for washer-dryer and fridge-freezer. Fitted with carpets to lounge area and lino to kitchen area.

Bedroom One

10' 8" x 9' 2" (3.25m x 2.79m)

Featuring ceiling light point, double glazed window, power point. Complete with underfloor heating. Fitted with carpet flooring.

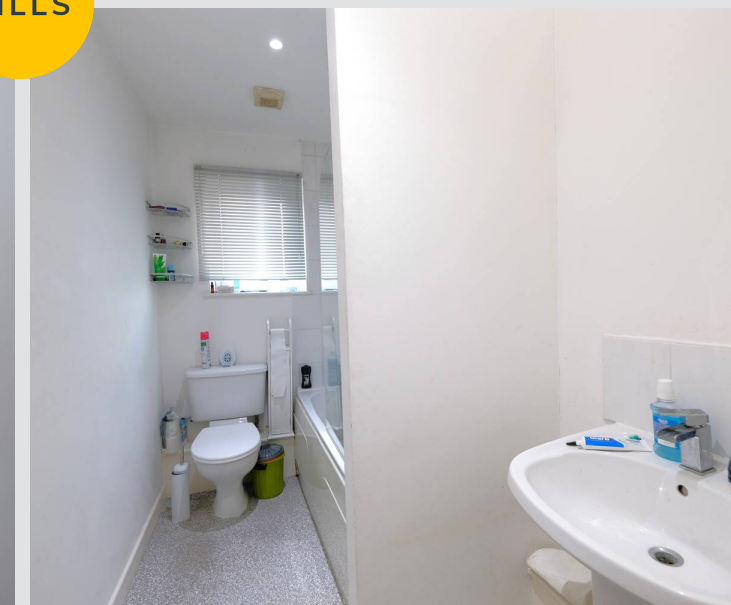
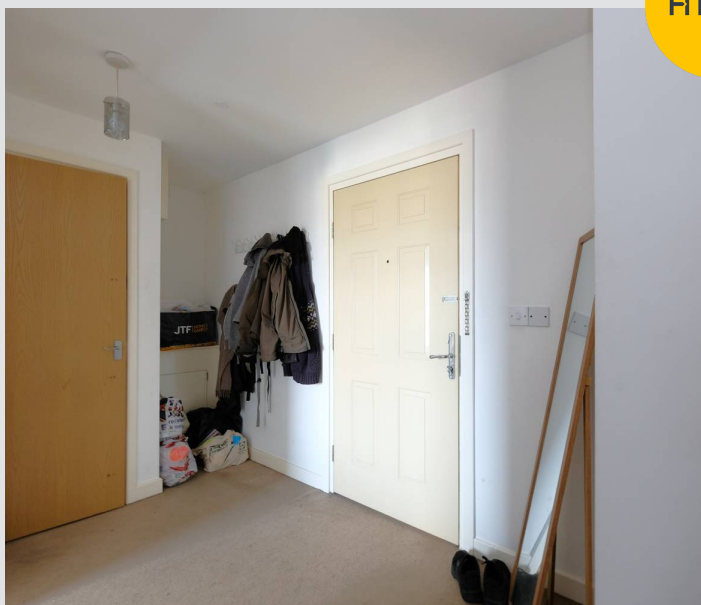
Bathroom

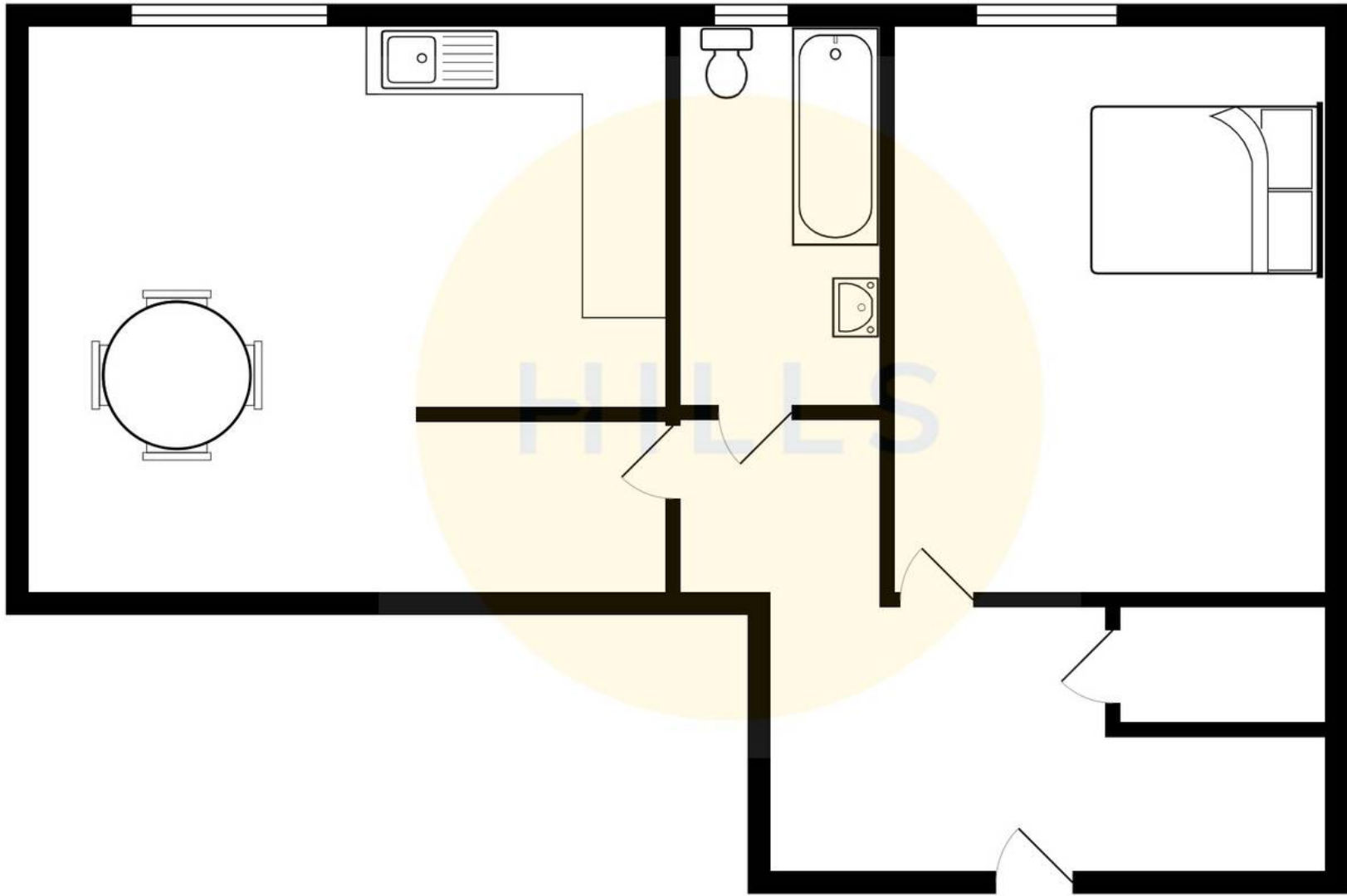
9' 1" x 5' 0" (2.77m x 1.52m)

Featuring three piece suite including w/c, shower over the bath, hand wash basin. Complete with ceiling light spotlights, double glazed window, underfloor heating, splash back, shower point. Fitted with lino flooring and part tiled walls.

External

To the rear of the property are communal gardens.







Hills | Salfords Estate Agent

Hills Residential, Sentinel House Albert Street - M30 0SS

0161 707 4900

sales@hills.agency

www.hills.agency/



THE PROPERTY MISDESCRIPTIONS ACT 1991 The Agent has not tested any apparatus, equipment, fixtures and fittings or services and so cannot verify that they are in working order or fit for the purpose. A Buyer is advised to obtain verification from their Solicitor or Surveyor. References to the Tenure of a Property are based on information supplied by the Seller. The Agent has not had sight of the title documents. A Buyer is advised to obtain verification from their Solicitor. You are advised to check the availability of this property before travelling any distance to view. Every effort and precaution has been made to ensure these particulars are correct and not misleading but their accuracy is not guaranteed nor do they form part of any contract. If there is any point which is of particular importance to you, please contact us and we will provide any information you require. This is advisable, particularly if you intend to travel some distance to view the property. The mention of any appliances and services within these details does not imply that they are in full and efficient working order. These particulars are in draft form awaiting Vendors confirmation of their accuracy. These details must therefore be taken as a guide only.