

**Kelso**

Call 01573 400399

**CULLEN KILSHAW**  
SOLICITORS & ESTATE AGENTS

WWW.CULLENKILSHAW.COM



## Shieldaig, Hume

TD5 7TR

**Offers Over £270,000**



Shieldaig is a fantastic semi-detached cottage, occupying an enviable setting just below Hume Castle and enjoying superb uninterrupted views of the surrounding countryside. The property offers a flexible and versatile layout and benefits from an abundance of attractive and additional features including a lovely upper lounge which could be used as an additional bedroom, if required, generous garden to the rear, garage, summerhouse and gated drive. This property is one that deserves an in-person viewing to fully appreciate all it entails and early viewing is strongly recommended.





# Shieldaig, Hume

TD5 7TR

Offers Over £270,000

Vestibule  
Hall  
Lounge  
Kitchen  
Dining Room  
Rear Hall  
Shower Room  
Two Bedrooms  
Upper Lounge

Oil Fired Central Heating  
Electric Storage Heating  
Single, Double & Secondary Glazing

Generous Garden  
Summerhouse  
Garage  
Drive





### Location

The property is located in the popular hamlet of Hume, a lovely mix of traditional and modern properties. Local services are available in the nearby village of Greenlaw (3.2 miles), including a doctor's surgery, post office, pub and local shops. Primary schooling is available within the village and there is a bus service to Berwickshire High School in Duns. A more extensive range of shops and services is available in Kelso (6 miles), including supermarkets and specialist shops. Hume enjoys a fantastic location in the countryside, and offers ample opportunity for outdoor enthusiasts with great walking routes on the doorstep.

### Fixtures & Fittings

The sale shall include all carpets and floorcoverings, light fittings, kitchen fittings and bathroom fittings.

### Services

Mains water and electricity. Private drainage. Single, double and secondary glazing.

### EPC

E

### Council Tax Band

D

### Viewing

Strictly by appointment with the Selling Agent.

### Entry

By mutual agreement.





Interested in this property?  
**Call 01573 400399**

43 The Square,  
Kelso, TD5 7HL  
Phone: 01573 400399  
Fax: 01573 400388  
Email: kelso@cullenkilshaw.com

Opening Hours:  
Monday to Friday: 9.00am to 5.00pm  
Saturday: 9.00am to 12.00 noon

Also At:

|             |                       |
|-------------|-----------------------|
| Galashiels, | Tel 01896 758 311     |
| Jedburgh,   | Tel 01835 863 202     |
| Hawick,     | Tel 01450 3723 36     |
| Kelso,      | Tel 01573 400 399     |
| Melrose,    | Tel 01896 822 796     |
| Peebles,    | Tel 01721 723 999     |
| Selkirk,    | Tel 01750 723 868     |
| Langholm,   | Tel 013873 80482      |
| Annan,      | Tel 01461 202 866/867 |



**Shieldaig, Hume**

Approximate Gross Internal Area = 128.0 sq m / 1378 sq ft

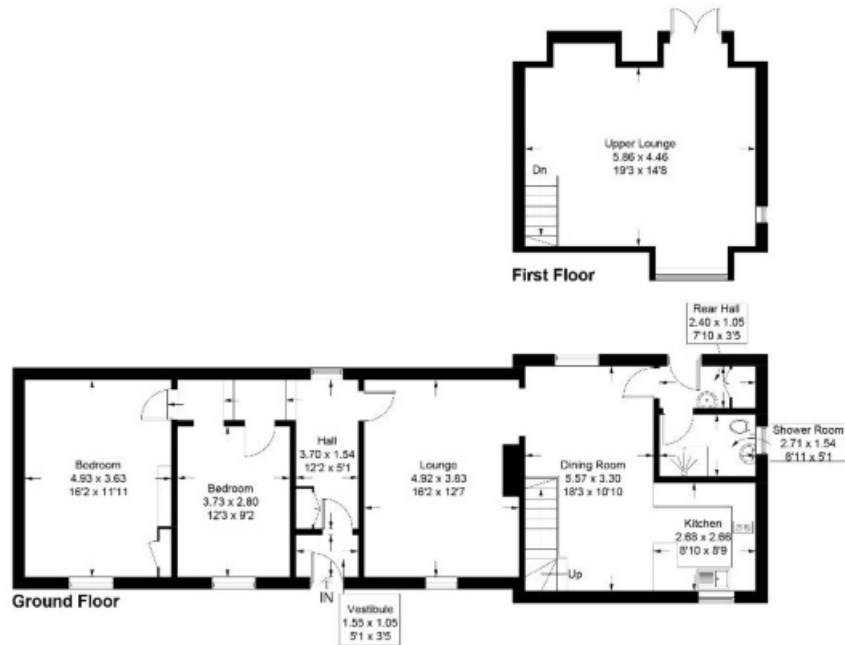


Illustration for identification purposes only, measurements are approximate, not to scale. floorplansUsketch.com © (1D1120950)

Full members of:



Whilst these particulars are prepared with care and are believed to be accurate neither the Selling Agent nor the vendor warrant the accuracy of the information contained herein and intending purchasers will be held to have satisfied themselves that the information given is correct.